

Sustainability Appraisal Scoping Report

Core Strategy (DPD)

Torquay Harbour Area Action Plan (DPD)

Planning Contributions (SPD)

Urban Design Strategy (SPD)

Great Parks Planning Brief (SPD)

Yalberton Planning Brief (SPD)

**Health • Social inclusiveness • Accessibility
• Heritage • Biodiversity • Economy
Education • Culture • Resources • Safety
Community • Environment • Health • Social
inclusiveness • Accessibility • Heritage
Biodiversity • Economy • Education •
Culture • Resources • Safety • Community
Environment • Health • Social inclusiveness
Accessibility • Heritage • Biodiversity**

Sustainability Appraisal: Scoping Report

Documents Covered:

Core Strategy (DPD)
Torquay Harbour Area Action Plan (DPD)
Planning Contributions (SPD)
Urban Design Strategy (SPD)
Great Parks Planning Brief (SPD)
Yalberton Planning Brief (SPD)

Prepared by:

**Strategic Planning Group
Environmental Policy Section,
Community Services
Torbay Council
3rd Floor Roebuck House
Abbey Road
Torquay
TQ2 5TF**

For further information regarding this scoping report or to request an alternative format or language please contact the Strategic Planning Group Tel: (01803) 208857.

The report can also be accessed via the internet: www.torbay.gov.uk/ldf

PART 1

Report Structure

This document comprises a sustainability appraisal of 6 plan documents within the Torbay Local Development Framework (LDF). It is structured as follows:

Part 1 – Gives context to the sustainability appraisal process and provides overarching information relevant to all the Local Development Documents under consideration.

Part 2 – Contains 6 chapters which provide a more detailed focus on sustainability issues relating to the following Development Plan Documents (DPDs) and Supplementary Planning Documents (SPDs):

- Core Strategy (DPD)
- Torquay Harbour Area Action Plan (DPD)
- Planning Contributions (SPD)
- Urban Design Strategy (SPD)
- Great Parks Planning Brief (SPD)
- Yalberton Planning Brief (SPD)

Each of these chapters are not included in this report but are available upon request from the Strategic Planning Group (01803 208857) or on the internet at www.torbay.gov.uk.

Full details of these and other related documents are set out in the Torbay Local Development Scheme (LDS).

Please note that there is an Executive Summary available which accompanies this document

Contents:

1. INTRODUCTION	10
2. REQUIREMENT FOR A SUSTAINABILITY APPRAISAL.....	11
3. METHODOLOGY	12
4. TIMETABLE.....	15
5. SCOPING REPORT: STRUCTURE AND PURPOSE	16
6. CONSULTATION:.....	18
7. PLANS, POLICIES AND PROGRAMMES (PPP) REVIEW:	19
8. BASELINE - ISSUES AND OPPORTUNITIES	34
9. DATA GAPS:.....	58
10. SUSTAINABILITY APPRAISAL FRAMEWORK.....	60
SUSTAINABILITY APPRAISAL INDICATORS:	65
14. PROPOSED STRUCTURE OF THE FINAL REPORT	76
15. NEXT STEPS.....	77
GLOSSARY:	78
LIST OF APPENDICES:.....	80

Tables:

Table 1: Documents which will form the Local Development Framework for Torbay	10
Table 2 : Stages involved in completing the Sustainability Appraisal process (as outlined in ODPM Sustainability Appraisal of Regional Spatial Strategies and Local Development Document Guidance (2005)).....	12
Table 3: Coverage of all SEA topics under the High Level Objectives used to structure this report.	13
Table 4: Sustainability Appraisal Objectives (as adapted from the RSS Strategic Sustainability Assessment).....	61
Table 5: Sustainability Appraisal Indicators.....	66

Figures:

Figure 1: Timetable for the Progression of the Torbay Local Development Framework.....	15
Figure 1a:Components of the Sustainability Appraisal Scoping Report for the Torbay Local Development Framework.	
Figure 2: Torbay's geographical situation within the South West (© Torbay Council Licence No: 100022695).....	33
Figure 3: Torbay (Unitary Authority boundary marked by thin dashed line).....	34
Figure 4: Indices of Living Environment Deprivation (ODPM 2004).....	47
Figure 5: Torbay Nature Conservation Sites.....	49
Figure 6: Torbay Landscape Designations.....	53
Figure 7: Agricultural Land Classification (DEFRA 2005).....	55
Figure 8: Historical Assets Within Torbay.....	57

1. Introduction

In accordance with the Planning and Compulsory Purchase Act 2004, Torbay Council is currently in the process of developing a Local Development Framework (LDF) which will eventually replace the Adopted Torbay Local Plan 1995-2011. The scope, format and management of this process is set out in the Council's adopted Torbay Local Development Scheme. The LDF consists of a 'portfolio' of Local Development Documents (LDDs) as outlined in Table 1. Collectively, they will provide and deliver the spatial planning strategy for Torbay for the period 2005 to 2016. For further information on the new planning system and the development of the LDF for Torbay please visit www.torbay.gov.uk/ldf.

Under the Planning and Compulsory Purchase Act 2004 and each of the Development Plan Documents (DPDs), Supplementary Planning Documents (SPDs) and require a Sustainability Appraisal to run parallel to their preparation. This process will ensure that environmental, social and economic effects of the LDF will be considered during plan formulation.

This document comprises an overarching scoping report for the Sustainability Appraisal of the 2 DPD and 4 SPDs **highlighted** in the table below. Further information on the purpose of this Scoping Report is outlined in Section 5.

Documents in Torbay Local Development Scheme	Document type	Sustainability Appraisal required?
Annual Monitoring Report	AMR	No
LDD1: Statement of Community Involvement	SCI	No
LDD2: Core Strategy	DPD	Yes
LDD3: Torquay Harbour Area Action Plan	DPD	Yes
LDD4: Site Specific Policies and Proposals	DPD	Yes
LDD5: Generic Development Control Policies	DPD	Yes
LDD6: Planning Contributions	SPD	Yes
LDD7: Urban Design Strategy	SPD	Yes
LDD8: Greenspace Strategy	SPD	Yes
LDD9: Great Parks, Paignton: Planning Brief	SPD	Yes
LDD10: Yalberton Road, Paignton: Planning Brief	SPD	Yes

Table 1: Documents which will form the Local Development Framework for Torbay

The Scoping Report for the Site Specific Proposals and Policies and the Generic Development Control Policies is scheduled to take place in early 2007. The Scoping Report for the Greenspace Strategy has been completed and is available for viewing on www.torbay.gov.uk/lds.

2. Requirement for a Sustainability Appraisal

It has become common practice to consider the environmental implications of significant projects and developments coming forward from individual planning applications through environmental impact assessments. However there is increasing recognition that the cumulative effect of a large number of small scale developments has a detrimental effect on the environment. It is for this reason that the Strategic Environmental Assessment (SEA) Directive (2001/42/EC) was integrated into UK legislation in July 2004. This Directive provides a means of ensuring that due consideration is given to environmental issues during the preparation and adoption of strategic level plans.

For the Development Plan Documents and Supplementary Planning Documents it is mandatory under the Planning and Compulsory Purchase Act 2004 to undertake a Sustainability Appraisal. This is based on the SEA process but is extended to encompass not only environmental but also potential social and economic impacts. The SEA requirements will have to be met within this broader Sustainability Appraisal (SA) process.

3. Methodology

This Sustainability Appraisal Scoping Report has been undertaken in accordance with ODPM guidance on sustainability appraisal². This guidance incorporates the requirements of the SEA Directive.

There are 5 key stages within the Sustainability Appraisal (SA) process. These are outlined in Table 2 and are in accordance with the final ODPM guidance on SA for Regional Spatial Strategies and Local Development Frameworks³.

Table 2 also signposts where each of the tasks are covered in this report. Where N/A is noted these tasks relate to work which is carried out in later stages of the appraisal process.

STAGE	TASK	Relevant Section in this SA Scoping Report
Stage A	Setting the context and objectives, establishing the baseline and deciding on the scope	
A1	Identifying other relevant plans, programmes and sustainability objectives	7 & Appendix B
A2	Collecting baseline information	8 & Appendix C
A3	Identifying sustainability issues and problems	8 & Appendix C
A4	Developing the SA Framework	10
A5	Consulting on the scope of the SA	6
Stage B	Developing and Refining Options and assessing effects	N/A
B1	Testing the plan objectives against the SA Framework	N/A
B2	Developing the DPD options	N/A
B3	Predicting the effects of the DPD	N/A
B4	Evaluating the effects of the DPD	N/A
B5	Considering ways of mitigating adverse effects and maximising beneficial effects	N/A
B5	Proposing measures to monitor the significant effects of implementation the DPDs	N/A
Stage C	Preparing the Sustainability Appraisal Report	N/A
C1	Preparing the SA Report	N/A
Stage D	Consulting on the preferred options of the DPD and SA report	N/A
D1	Public participation on the preferred options of the DPD and the SA report	N/A
D2 (i)	Appraising significant changes	N/A
D2 (ii)	Appraising significant changes resulting from representations	N/A
D3	Making decisions and providing information	N/A
Stage E	Monitoring the significant effects of Implementing the DPD	N/A
E1	Finalising aims and methods for monitoring	N/A
E2	Responding to adverse effects	N/A

Table 2: Stages involved in completing the Sustainability Appraisal process (as outlined in ODPM Sustainability Appraisal of Regional Spatial Strategies and Local Development Document Guidance (2005))

This scoping report is the product of the tasks undertaken as part of **Stage A**. The purpose and detailed methodology for each of these tasks is included within the relevant sections in the main report. Quick line is purpose to identify baseline issues and sustainability objectives by which to create on Sustainability Appraisal Framework to test the plan and sustainability.

Who is responsible for SA work:

This SA scoping report has been compiled by Torbay Council Officers with environmental backgrounds and qualifications with support from the Strategic Planning Group which has a detailed understanding of key local issues and relevant planning policy frameworks. Input was also received from the Regional Spatial Strategy's Strategic Sustainability Appraisal and C4S consultants in compilation of the plans, policies and programmes review.

²ODPM (November 2005) 'Sustainability Appraisal of Regional Spatial Strategies and Local Development Frameworks'

³ Please note that the stages outlined in the earlier published Greenspace Strategy SA Scoping Report are slightly different from those outlined above. This is as a result of changes to the guidance as it progressed from the consultation draft (used for the Greenspace Strategy) to the final guidance used for the remaining LDF documents including those outlined here.

The development of the scoping report was assisted by discussion and data sharing with:

- Business Units of the Council providing specialist knowledge in key areas, in particular in the compilation of baseline data. Such units included Conservation and Design Team, Environmental Health, The Research and Consultation Team, Drainage and Highways, Strategic Transportation, Strategic Environmental Policy.
- Torbay Primary Care Trust, Devon Biodiversity Records Centre, Torbay Biodiversity Action Plan Group, RSPB, Safer Communities Partnership, Regen South West, Devon Association of Renewable Energy (DARE), Devon RIGS Group.

Compliance with SEA Directive

In order to demonstrate compliance with the SEA Directive, all the SEA requirements are listed in Appendix A. Those which relate to the production of this scoping report are highlighted and referenced to the correct point in the text.

When undertaking an SEA the Directive requires that a certain number of environmental issues are covered. Within this sustainability appraisal they are covered in one or more of the following 6, High Level Objectives by which this report is structured.

1. Improve Health and Wellbeing.
2. Support Communities that meet people's needs.
3. Develop the economy in ways that meet people's needs.
4. Provide access to meet people's needs with least damage to communities and the environment.
5. Maintain and Improve the environmental quality and assets.
6. Minimise consumption of natural resources.

Table 3 lists the specific SEA topics and under which of the 6 High Level Objectives (outlined in section 10) they are covered under within this SA Scoping Report.

SEA Topic	High Level Objective
Biodiversity	5
Population	2
Human Health	1
Fauna	5
Flora	5
Soil	5, 6
Water	5, 6
Air	4, 6
Climate	3, 4, 5, 6
Cultural heritage	2, 5
Landscape	5
Material Assets	5, 6

Table 3: Coverage of all SEA topics under the High Level Objectives used to structure this report.

Relationship with Equalities Impact Assessment: The ODPM SA Guidance (November 2005) suggests that an Equalities Impact Assessment may be incorporated as part of the sustainability appraisal process.

In terms of this sustainability appraisal, SAs are a means of highlighting the social, economic and environmental impacts of a given plan. Through its very nature an SA such as this will consider social issues such as equality. This is reflected in the objectives in Section 10 which have objectives which are specifically worded to ensure social inclusiveness including for example '1.2: Reduce health inequalities', '2.2: Give *everyone* access to learning, training, skills and knowledge', '3.2: Help *everyone* afford a comfortable standard of living', '3.3: Reduce poverty and income inequality' and '4.3: Help *everyone* access basic services easily, safely and affordably'. These are objectives which promote inclusiveness and will in turn test the Local Development Framework for social inclusiveness.

An Equality Impact Assessment was carried out on the Adopted Torbay Local Plan, which will be a saved plan in the Torbay Local Development Framework. Areas of particular relevance over the differential impact of a policy include:

- Policy H14: Caravan sites for travelling people (Different racial Groups)
- Policy H5 and policy H6: Provision of affordable housing on identified sites (H5) and unidentified sites (H6)
- Policy CF15: Accommodation for people in need of care/ people with dependents/ care responsibilities and on grounds of age
- Policy CF1: Provision of community facilities (e.g. places of worship- people from different faiths communities)
- T7: Develop Accessibility and access for disabled (disabled)

The Equalities Impact Assessment carried out noted that:

The Local Plan is a statutory document produced in accordance with Government legislation and guidance. It is subject to full consultation with interested individuals and organisations (e.g. disabled people's groups). Policies that do affect different equalities strands are of a positive nature.

4. Timetable

The work programme for the Local Development Framework has been outlined in the Local Development Scheme (adopted in December 2005) and is included below for reference. Each LDD within the Torbay Local Development Framework has a different timetable. The Sustainability Appraisal work runs parallel to the development of each. A detailed timetable for each of the LDDs is given in their individual chapter in Part 2.

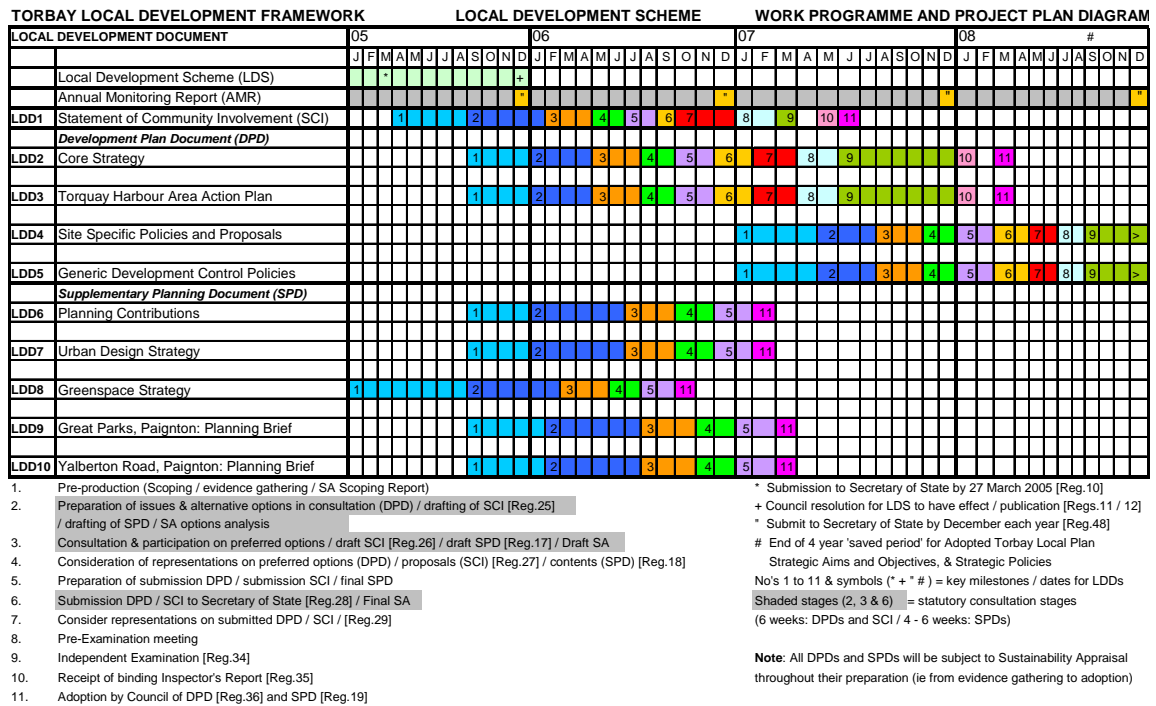


Figure 1: Timetable for the progression of Torbay Local Development Framework

5. Scoping Report: Structure and Purpose

This scoping report summarises the work required for Stage A of the Sustainability Appraisal for 6 LDDs in the Torbay LDF (See Table 3 Section 3). Its overall purpose is to identify baseline issues and sustainable objectives by which to create a Sustainability Appraisal Framework to test the plan for sustainability.

Structure:

It should be noted that this report is structured under the 6 High Level Objectives outlined in Section 10.

Much of the information gathered for the scoping stage of the SA process is common to all 6 LDDs that require an appraisal. It is for this reason that this report is a combined Scoping Report structured to cover 6 LDDs. It is divided into 2 Sections:

PART 1: Overarching information. This provides information common to all the LDDs as indicated in the highlighted box below.

PART 2: Subdivided into 6 chapters. Each chapter provides a focus on each of the LDDs, outlining its background and plan objectives and providing more detailed SA information on that particular document.

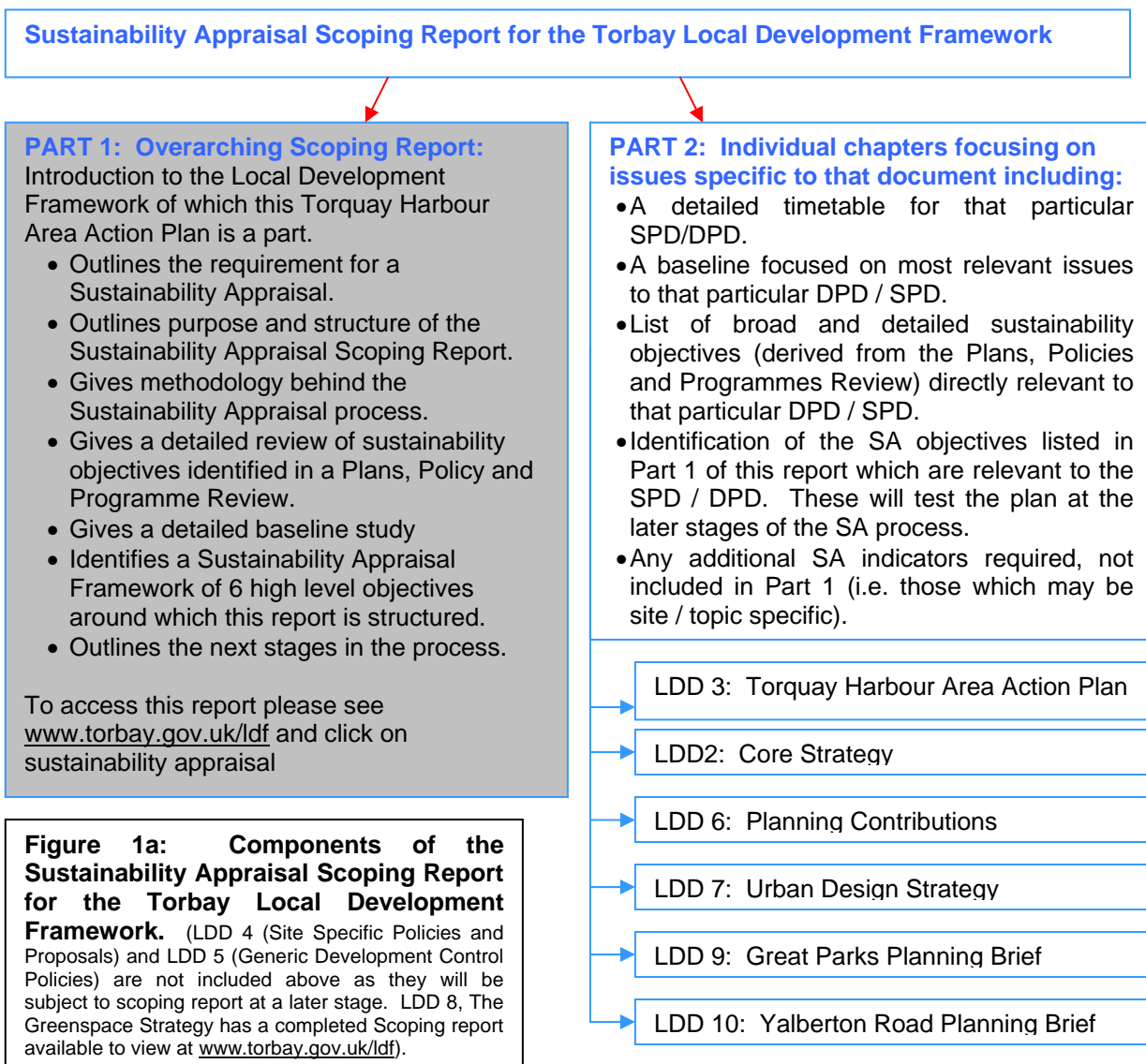



Figure 1a: Components of the Sustainability Appraisal Scoping Report for the Torbay Local Development Framework. (LDD 4 (Site Specific Policies and Proposals) and LDD 5 (Generic Development Control Policies) are not included above as they will be subject to scoping report at a later stage. LDD 8, The Greenspace Strategy has a completed Scoping report available to view at www.torbay.gov.uk/ldf).

Purpose:

This Scoping Report has been compiled for consultation purposes to ensure that:

- All relevant sustainability issues in Torbay have been identified (see Section 8).
- All the relevant Plans, Policies, Programmes and sustainability objectives have been identified (see Section 7)
- The sustainability framework identified in Section 10, is appropriate to test each plan for sustainability

This will in turn ensure that the sustainability appraisal is sufficient to support the LDDs at later stages of full public consultation.



6. Consultation:

As outlined in Section 5, part of the purpose of producing the Scoping Report is for consultation. To assist in providing a focused response on the key areas, a number of questions (relating to the content and methodology behind this report) have been formulated and summarised in a response form which accompanies this document. Feedback on these issues would be gratefully received.

Who is consulted?

The SEA Directive requires that statutory consultees (English Nature, English Heritage, The Countryside Agency and The Environment Agency) are consulted on the contents of this Scoping Report.

The following additional stakeholders are also being consulted:

Torbay Council:

Planning and Development Services
Les Crump – Assistant Director
Ivan Woodcock – Service Manager
Housing Services (Simon Sherbersky – Assistant Director)
Cultural Services (Sue Cheriton – Assistant Director)
Environmental Health and Consumer Protection (Steve Cox – Principal Safety and Licensing Officer)
Performance Policy and Communications (Bernard Page – Service Manager)
Estates Manager, Financial Services (Sam Partridge - Estates Manager)
Strategic Transportation (Peter Brunt – Service Manager)
Strategic Environmental Policy (Michael Trevarthen – Service Manager)
Environmental Policy (Mike Fox – Assistant Director)

Torbay Development Agency

Chief Executive (Richard Morgan)
Assistant Director (Kevin Atkinson)
Director of Marine Services (Kevin Mowat)

Torbay Strategic Partnership

Torbay Coast and Countryside Trust (Dominic Acland – Director)

Each chapter in Part 2 includes a list of additional consultees who have interest in the topic under consideration within that particular DPD / SPD.

Further Consultation:

There will be further opportunity for consultation on the SA process at two later stages:

- a) Information on the sustainability of the plan options will be given during consultation on the issues and alternative options stage (subject to the subject matter dealt with by the LDD)
- b) A draft SA will be available for consultation alongside the draft LDD. This will give a detailed sustainability appraisal of the preferred options.

7. Plans, Policies and Programmes (PPP) Review:

Purpose of the PPP Review: A review of plans, policies and programmes has been carried out in order to identify external objectives and sustainability issues, outlined in existing Government and non Government documents, which should be considered when developing the SPDs and DPDs in the Local Development Framework. These plans cover a range of geographical areas from international to local level, and a range of issues including social, economic and environmental. They support and help the Sustainability Appraisal objectives chosen in Section 10.

PPP Review Methodology: On advice from the South West Regional Assembly and to save duplication of work, review details for higher level policies have been extracted from the Strategic Sustainability Assessment (SSA) of the Regional Spatial Strategy (RSS). This review covers:

- A) European Directives and European Commitments
- B) National Strategic, Plans and Programmes (including Planning Policy Guidance Notes and Planning Policy Statements)
- C) Regional Strategies, Plans and Programmes.

Local and County level plans and policies have been extracted from a plans, policies and programmes review carried out by C4S Consultants in May 2005. These have been supplemented by a number of local documents which have been reviewed within the Strategic Planning Group.

For each document considered, the following information is extracted:

- Aim/ purpose of the plan, policy or programme under consideration
- Objectives contained within the document
- Any targets which may be relevant to the SA process
- Key sustainability objectives which the SA should take account of

A full list of titles and the detail of all the plans, policies and programmes reviewed is included in Appendix B. They are grouped by the RSS SSA High Level Objectives which have been adopted as part of the SA framework identified in this scoping report (see section 10). The key sustainability issues and objectives which have arisen as a result of this review are outlined below and grouped by high level objective. They should be considered when formulating each LDD and are therefore providing background to the Sustainability Appraisal Objectives outlined in Section 10. It should be noted that this is not an exhaustive list of all plans, policies and programmes with sustainability objectives but comprises a number of key documents.

For ease of reference the broad sustainability objectives under each of the 6 sections have been summarised in the box at the end of each section

All the documents in the full PPP review (Appendix B) are numbered. The numbers in brackets in the following summary reference the document from which the objective is derived (i.e. in Appendix C).

1. Improve Health:

- Priorities for public health identified by the Torbay Primary Care Trust(23):
 - Tackling:
 - Health inequalities
 - Obesity
 - Reducing:
 - The number of people who smoke
 - Harm and encouraging sensible drinking
 - Improving:
 - Sexual Health
 - Mental Health and well being
- Encourage development which helps tackle health inequalities (i.e. through improved social housing, opportunities for education attainment, access to public services and increased opportunities for higher incomes) (21)
- Provide people with the tools to help encourage exercise and reduce the number of people who are obese (22)
- Improve the quality of life, and independence, of vulnerable adults, targeting those in greatest need (13)

1. Improve Health:

- Tackle health inequalities and the issues which lie behind them to become more socially inclusive
- Provide infrastructure to encourage routine daily exercise
- Improve mental health and wellbeing
- Reduce the number of people who smoke / drink

2. Support Communities that meet people's needs:

Housing:

- Recognise the importance of equal opportunities to a decent home (26)
- Assist in delivery of affordable housing (37)
- Assist in balancing housing supply and demand:
 - Bring empty residential properties back into use and where suitable non residential properties for housing (27)
 - Recognise the need to restrict the number of second homes to assist providing housing for local need (27)
 - Develop housing markets with a range of tenures to improve balance between supply and demand (28)
- Promote well designed, good quality, sustainable housing (26, 27, 37):
 - Provide an appropriate range of housing to meet the needs of residents. (12)
 - Promote urban renaissance and improve quality of life through well designed new housing and residential environments (26)
 - Require a high standard of design and layout, which provides safe and secure accommodation and meets the requirements of vulnerable groups (12).
 - Involve all local communities in improving their neighbourhoods for the long term (13)
 - Look at the links between housing condition, identifying the underlying factors that affect health, and deal with the long-term causes of inequalities in health for all residents (13)

Learning:



- Ensure everyone in the South West has the opportunity throughout their lifetime to learn and develop new skills that enable them to achieve their full potential, capitalising on the latest developments in information communication technology (9)
- The Torbay Education Development Plan 2002-2007 outlines a number of local education priorities including raising attainment and achievement, inclusion and embracing new educational technologies (36)
- Community Plan priorities for education include (13):
 - Continuing to develop high quality education:
 - Support schools, community colleges and South Devon College to provide high-quality education and training and promote enjoyment in learning.
 - Equip young people with the skills and knowledge needed nowadays. A well educated, skilled and motivated population is crucial to Torbay's economy and well being
 - Involving all young people:
 - Provide more early years education and childcare places in order to improve children's learning as soon as possible, help parents to return to work if they want to
 - Take action to reduce the number of young people who are not educated in mainstream schools
 - Developing Lifelong learning:
 - Encourage young people to continue their learning after secondary school through education and further training.
 - Ensure adults in the local community have the learning opportunities to develop the skills and confidence they need.
 - Promote lifelong learning for individuals and families. Make sure that people are motivated to develop their skills and knowledge throughout life

Crime:

- Reduce crime and disorder and their social and economic costs. In particular in Torbay strategic aims of the community Safety Strategy 2002-2005 include to reduce victimisation, discourage/ reduce offending behaviour and improve the situation in the community (34)

- 'Safer Place - The Planning System and Crime Prevention' (ODPM 2004) (26C) outlines a number of sustainability issues relating to crime prevention to promote sustainable communities through:
 - Access and movement – places with well defined routes, spaces and entrances that provide for convenient movement without compromising security
 - Structure – places that are structured so that different uses do not cause conflict
 - Surveillance – places where all publicly accessible spaces are overlooked
 - Ownership – places that promote a sense of ownership, respect, territorial responsibility and community
 - Physical Protection - Places that include necessary, well-designed security features
 - Activity – places where levels of human activity are appropriate to the location and creates a reduced risk of crime and a sense of safety at all times
 - Management and maintenance – places that are designed with management and maintained in mind, to discourage crime in the present and in the future

Vibrant Communities:

- Work with communities to provide activities, resources and support that strengthen the skills and abilities of people, so they can take effective action in developing their communities (13)
- Ensure that the decision making processes deliver decisions that result in greater social inclusion: Decisions should contribute to a society where people have equal access to services, facilities, activities and opportunities (13)
- Recognise the importance of good quality open space to the long term creation of successful popular and viable sustainable communities (74c)
- Advocate empowerment, encouraging people of all ages to participate in the design process raising public awareness of the benefits of good design (78a)
- Support and protect young people and their families, particularly those who are most excluded, so they can develop and take part in the community as fully as possible. The people who are most excluded are those who face the most obstacles, such as poverty, unemployment and poor housing, to making the most of life's opportunities (13)
-  ively promote effective, participative systems of government in all levels of society  ngaging people's creativity, energy and diversity (4a).

Culture:

- Create a more vibrant and diverse mix of cultural activities in Torbay's unique location which are recognised, valued and taken up by local people and visitors alike (88)
- Making greater use of the area's natural environment and historic buildings as venues for cultural activities for example by securing and running a program of world class cultural and sporting events, based on Torbay's maritime and coastal environment (88)
- Create public art, events and street theatre in town centres and public open spaces (88)
- Increase people's access to and understanding of cultural opportunities and improve the quality of what is currently available (13)
- Increase the range of cultural opportunities especially by meeting the needs of Torbay's young people and those traditionally not involved in cultural activities and by developing an environment to encourage sustainable cultural industries (13)
- Secure adequate leisure and recreation facilities to serve the needs of Torbay's population and improve access to the countryside and areas of high quality environment (12)
- Improve the quality of Torbay's beaches and coastal zones, including (where appropriate securing better access and providing for competing demands for water sports in a safe environment (12)
- Recognise the importance of open space and support provision of good quality open spaces and sports facilities to meet a variety of needs. Open Spaces should:
 - Be accessible e.g. either by foot, horseback or bicycle (25).

- Assist in meeting the targets set out by English Nature for the provision of greenspaces in Towns and Cities (24).
- Address the conflicts between the needs of tourists and local people who have different requirements for such spaces (40).
- Provide sufficient area of land and water resources for informal sport and organised recreation to meet the need of all sectors of the community including the elderly and disabled. (26b)
- Provide adequate informal play space in appropriate areas within new housing developments. (40)
- Give due consideration to public perception about what is important in the identity and quality of public spaces (74c)
- Incorporate active frontages at ground level to public spaces where feasible and appropriate for the land use and type of area (74c)
- Act as multifunctional areas for wildlife, flood control, education and community cohesion as well as recreation (25)

Population:

- Harness the benefits of population growth and manage the implications of population change.
Establish a framework which allows for developer contributions to ensure the provision of adequate / physical infrastructure including off site water to serve the effected increase in population and commercial and industrial development.

2. Support communities that meet people's needs:

- Ensure provision of a range of good quality, sustainably designed and affordable housing which meets the needs of a range of social groups
- Provide everyone with opportunities for education and training both within schools and through life long learning
- Reduce crime and incorporate crime prevention measures to promote sustainable communities
- Recognise importance of developing vibrant communities where everyone is able to be involved in decision making promoting social inclusion and ownership of local living environments
- Promote development of a diverse range of good quality cultural activities which are accessible to all
- Recognise the social, environmental and economic value of open spaces
- Ensure provision of sufficient infrastructure to meet the needs of the projected increase in population

3. Developing the Economy in ways that meet people's needs

Range of job opportunities:

- Create new and wide ranging business opportunities and encourage growth of existing businesses (including developing new employment sites) to reduce unemployment, particularly amongst young people, and increase average earnings (13)
- Provide for the economic diversification of the local economy from an over-reliance of tourism to include office and commercial development, new technology businesses and appropriately sited business parks, in addition to sites for light industry (12)
- To support the needs of the fishing industry in a sustainable manner (12)
- Assist in developing the South West as a leading region for innovation and knowledge based businesses (45)
- Assist in stimulating employment and business start ups (45)
- Ensure people have work opportunities both paid and unpaid (9)
- Help provide an attractive environment which encourages inward investment (e.g. cultural activities and physical environment) (45)
- Create more business and encourage existing ones to grow (9)

Ability to afford a comfortable standard of living:

- Reduce the need to travel (9)
- Links to provision of a range of job opportunities (see above)
- Links to life long learning to improve income levels (see section 2)
- Links to sustainability objectives on provision of affordable housing (see section 2)

Poverty and income inequality:

- Reduce the incidence of unemployment, low pay and tackle income inequality across the region (9)
- Assist in regeneration of disadvantaged communities (45)
- Invest in disadvantaged areas to provide improved services and employment opportunities (43)
- Promote high quality and inclusive design improving the quality of the public realm and open spaces (43)

Meeting local needs locally:

- Promote the development of balanced and safe communities with adequate housing, employment and facilities to meet needs (9)
- Ensure integration of all developments (industrial, commercial, housing, mixed use, infrastructure) with transport to ensure sustainable growth (42)
- Maintain vitality of town centres by increasing accessibility
- Sustain and enhance the three towns (in Torbay) as the dominant shopping centres and commercial focal points by a range of improvements to their retail role and services and by ensuring they are not undermined by new shopping provision elsewhere (12)
- Encourage town centre development to promote vitality and viability and enhance customer choice (43)
- Protect and enhance areas of architectural and historic heritage within centres and provide a sense of place and focus for the community. (43)
- Promote production of high quality local food and drink (9)

Harness economic potential of the coast in a sustainable way:

- A precautionary approach is also required for policies relating to land affected, or likely to be affected, by erosion or land instability. In the case of receding cliffs, development should not be allowed to take place in areas where erosion is likely to occur during the lifetime of the building. (68)
- Recreation activities in the coastal zone should be appropriate and in harmony with it. (68)
- Although demand varies considerably from region to region, each year additional new water craft put growing pressure on existing facilities. Policies for development of

further facilities should be based on an assessment of the capacity of the local environment to accommodate further water-based recreation (68)

- Policies should encourage the imaginative re-use of disused commercial docks as part of the regeneration of such areas, whilst conserving and restoring landmarks and structures of special historic, architectural or archaeological interest(68)

Tourism:

- Explore possibilities to develop responsibly-managed niche markets such as wildlife tourism, scuba diving and heritage boats (87)
- Recognise emerging trends in tourism which require a new focus on older travellers, healthy living breaks, greater focus on arts, culture and history, promotion of sustainable tourism, hobby-related holidays and cultural/ historic holidays (47)
- Explore and encourage possibilities for sustainable tourism (46)
- Protect designated areas which attract tourism (National Parks, AONBs, SSSIs, Conservation areas and historical and archaeological sites) (41)
- Take account of existing character of the resort when planning new development in seaside resorts (41)
- Take opportunities to use tourism as a means of urban regeneration (41)
- Recognise the importance of retaining holiday accommodation to prevent weakening of the holiday atmosphere and reduce diminution of accommodation stock (41)
- Encourage and promote improvements in the quality and range of facilities in each of Torbay's towns, make resort centres more accessible and more attractive places to visit, and reduce poverty and deprivation (13)

3. Developing the economy in ways that meets people's needs

- Provide the infrastructure to assist in diversifying the economy encouraging development of local businesses as well as encouraging inward investment
- Address concern over cost of living derived from housing, travel costs and low income
- Assist in regeneration of disadvantaged communities providing people with tools with which to increase income levels and improve their local environment
- Encourage mixed use developments which enhance vitality and viability of local and town centres and provides a good range of facilities and services
- Recognise and adapt to the changing nature of tourist industry whilst working within local environmental capacity
- Reduce vulnerability of the coast to climate change through careful coastal management.

4. Provide access to meet people's needs with least damage to communities and the environment:

Access by car:

- Encourage development in locations which reduce the need for car journeys and the distance driven, or which permit the choice of more energy efficient public transport, cycling or walking, as alternatives to the private car (12)
- Promote the use of sustainable modes of transport and discourage car travel (54)
- Ensure that new development does not cause unacceptable congestion (12)
- Minimise casualties resulting from road accidents (54)
- Improve conditions on the road network to eliminate bottlenecks, which lead to congestion and pollution (54)
- Promote development that is designed and located to minimise its environmental effect (26a)

Travel by air:

- Seek to reduce and minimise the impacts of airports on those who live nearby, and on the natural environment (50a)
- Ensure that, over time, aviation pays the external costs its activities imposed on society at large - in other words, that the price of air travel reflects its environmental and social impacts (50a)
- Minimise the need for airport development in new locations by making best use of existing capacity where possible (50a)

Safe and affordable access to basic services:

- Ensure all people, including those with disabilities, can easily and comfortably move through and into developments allowing freedom of choice for all and everyone to equally participate in the uses places are put to. (74c)
- Locate day to day facilities which need to be near their clients in local centres so that they are accessible by walking and cycling. (49) especially to those without a car (52)
- Increase the use of mixed use development opportunities to achieve wider community regeneration and balance communities (37)
- Use the land available to provide a range of good quality services including health, housing, transport, finance, shopping, leisure and protection from crime that meet the need of the people and businesses (75)
- Improve accessibility to jobs and services and ensure that patterns of future development reduce the need to travel (10)
- To ensure that everyone, including disadvantaged and minority groups, living and working in Torbay in addition to visitors, has access to a range of services and facilities which will improve quality of life (12)
- To encourage provision of facilities for people with special needs, particularly the elderly, the disable, single parent families care in the community groups and other special needs groups (12)

Access by public transport:

- Promote fuel efficient transport systems accessible to all (9).
- Manage development patterns of urban growth to make fullest use of public transport (49)
- Protect sites which could be critical in developing infrastructure to widen public transport links in the future (49)
- All residential areas to be provided with at least hourly bus services to the closest town centre and other key services (54)
- High quality bus and rail infrastructure to be provided in all areas where this is appropriate, including bus stations, interchanges, and at key junctions (54)

Access by cycling, walking:

- Ensure that road layouts prioritise safe, easy and direct pedestrian movement and the creation of a network of attractive, well connected public spaces (74c)
- Ensure development comprising jobs, shopping, leisure and services offer a realistic choice of access by public transport, walking and cycling (49)

- Develop a high quality walking routes linking each town to its hinterland residential areas (54) which are welcoming, understandable and easy to use (74c)
- Personal security and the fear of crime should not be a discouragement to walking anywhere in Torbay (54)

Freight transportation:

- Freight facilities in Torbay, which encourage the use of rail and sea transport will be provided and improved to attract freight away from road (54)
- Ensure movement of freight is adequately controlled and suitable provision made so that penetration of lorries and commercial vehicles into residential areas, pedestrian zones and focal points can be achieved without unacceptable environmental consequences (12)

4. Provide access to meet people's needs with least damage to communities and the environment:

- Discourage the level of car use
- Minimise the need for airport development in new locations by making best use of existing capacity where possible
- Assist in locating day-to day facilities (e.g. shopping, leisure and jobs) in locations easily accessible by walking/ cycling to a variety of groups
- Manage development patterns to make fullest use of public transport
- Give priority to public transport, cyclist and pedestrians over car users
- Ensure accessibility for the disabled
- Promote an integrated approach to transport and land use planning to increase efficiency of the transport systems
- Ensure a sufficient provision of footpaths and cycle routes within new and existing developments
- Encourage freight transport by rail/ sea to alleviate traffic congestion.

5. Maintain and Improve environmental quality and assets

Protect habitats and species:

- Recognise the value of individual sites as well as their value as part of a wider environment. A holistic approach is required considering ecosystems rather than islands of protected species(56)
 - Protect remaining areas of nature conservation value within the developed coast (68)
 - Recognise the importance of green infrastructure which is an areas multi-functional network of habitats, greenspaces and linkages (75a)
 - Give consideration to endangered and vulnerable species (55) including wild and migratory bird species (61)
 - Give due consideration of priority habitats as outline in the Torbay BAPs (currently under development) (72)
 - Encourage development which is appropriate for the sole purpose of conserving or enhancing biodiversity (64)
 - Identify areas for new habitats, buffer zones and wildlife corridors (104a).
 - Promote education on the need to conserve biodiversity (55)
- Where biodiversity is threatened by development, ensure suitable alternative sites are considered as well as options for mitigation or compensation (for example encourage the incorporation of beneficial biodiversity and geological features within development design) (64)
- Respect the limits of the planet's environment and ensure that the natural resources needed for life are unimpaired and remain so for future generations (4a).

The SEA Directive requires specific consideration of the following Directives:

79/409/EEC – Directive on Conservation of Wild Birds.

The Birds Directive addresses the conservation of all wild birds throughout the European Union, including marine areas, and covers their protection, management, control and exploitation. It applies to the birds, their eggs, nests and habitats. It places a broad requirement on Member States to take necessary measures to maintain the populations of all wild birds at levels determined by ecological, scientific and cultural needs. In doing so, Member States must also consider economic and recreational needs. The main provisions of the Directive include:

- The maintenance of the favourable conservation status of all wild bird species across their distributional range (Article 2) with the encouragement of various activities to that end (Article 3).
- The identification and classification of Special Protection Areas for rare or vulnerable species listed in Annex I (PDF 106KB) of the Directive, as well as for all regularly occurring migratory species, paying particular attention to the protection of wetlands of international importance (Article 4). (Together with Special Areas of Conservation (SACs) designated under the Habitats Directive, SPAs form a network of pan-European protected areas known as Natura 2000.)
- The establishment of a general scheme of protection for all wild birds (Article 5).
- Restrictions on the sale and keeping of wild birds (Article 6).

92/43/EC Conservation of Natural Habitats and Wild Fauna and Flora (Directive 92/43/ EC)

The EC Directive on the Conservation of Natural Habitats and Wild Flora and Fauna establishes a legislative framework for protecting and conserving Europe's wildlife and habitats. At the centre of the policy is the creation of a coherent ecological network of protected areas across the EU - known as NATURA 2000 for habitats and species considered to be of outstanding international significance and therefore of importance to the maintenance of biodiversity in the European Union. Its purpose is to maintain or restore the habitats and species at a favourable conservation status in their natural range.

- The aim of this Directive shall be to contribute towards ensuring bio-diversity through the conservation of natural habitats and of wild fauna and flora in the European territory of the Member States to which the Treaty applies.

- Measures taken pursuant to this Directive shall be designed to maintain or restore, at favourable conservation status, natural habitats and species of wild fauna and flora of Community interest.
- Measures taken pursuant to this Directive shall take account of economic, social and cultural requirements and regional and local characteristics.

Conservation and wise use of land:

- Protect the best and most versatile agricultural land and encourage appropriate forms of diversification in the use of lower quality agricultural land, where this would not adversely affect its wildlife value, including retention of an agriculturally viable urban fringe (12)
- Promote sustainable patterns of development and make better use of previously developed land (26)
- Restore unused, degraded and derelict land to beneficial use (12)
- Ensure soil managers will look after their soils with a view both to their own and society's short term needs and to the interests of future generations (109).
- Ensure that England's soils will be protected and managed to optimise the varied functions that soils perform for society (e.g. supporting agriculture and forestry, protecting cultural heritage, supporting biodiversity, as a platform for construction), in keeping with the principles of sustainable development and on the basis of sound evidence (109).

Landscape and townscape:

- Ensure that key landscape features on particular sites are protected and that development is best sited to take advantage of, and maintain, landscape qualities and character (74c)
- Recognise the contribution that a high quality natural environment makes to the economy of Torbay, including the agricultural and environmental value of the urban fringe (12)
- Support delivery of high quality architecture that respects its context without unduly restricting architectural styles (74c)
- Recognise the contribution that high quality architecture can make to the quality of the urban and rural environment (74c)
- Consider use of trees and planting to set the scene for Torbay (54a)
- Protect areas of significant and wildlife and landscape value from pressures arising from built development, visitors or other sources (12)

Diversity and distinctiveness:

- Promote building design which is sensitive to its location (80)
- The distinctive qualities and features of Devon's Landscape Character Zones should be maintained (11)

Historical assets:

- Recognise the role of the historic environment establishing local distinctiveness and its role in leisure, recreation, tourism (65)
- Ensure the historic environment is accessible and raise the profile of the South West historical environment (overcome physical, cultural and social barriers) (80)
- Recognition required of the importance of partnership (public, private and voluntary) working in addressing the opportunities and challenges of the historic and natural environment
- Protect archaeological sites from damage through construction of new build (66)
- Promote use of traditional conservation and management skills where possible (80)
- Improve public access to ports, land, water and views (87)
- Hinge policies around the concept of optimum viable use of historic assets such as listed buildings, consistent with their historic character, stressing the presumption against demolition, and the need to ensure that design interventions have regard to stated characteristics (74c)
 - Recognise that appropriate contemporary design can positively enhance the character and quality of conservation areas whilst discouraging the general use of facadist replica solutions (74c)
 - Emphasise the importance of the settings of listed buildings and other historic assets (74c)
- Manage access to protect historic environments or conserve wildlife habitats (68)

- Protect and enhance recognised historic features such as listed buildings, Historic Parks and Gardens, Historic Battlefields as well as those historic features of the wider environment (65)
- Encourage better management and positive re-use of redundant historic buildings
- Reconcile the need for economic growth with the need to protect the natural and historic environment (65)
- Avoid loss of the fabric through neglect (65)
- Give due consideration to the risks for Scheduled Ancient Monuments (82)
- Protect and enhance locally and regionally important heritage features including our social heritage and oral history (91)

Flooding:

- Give due consideration to the risk of flooding, erosion and land instability (68)
- Manage the economic impacts of flooding from surface water in urban areas (85)
- Apply precautionary principle to the issue of flood risk using a risk based search sequence to avoid such risk where possible and manage it elsewhere (67)
- Recognise the importance of functional floodplains, where water flows or is held at times of flood, and avoid inappropriate development on undeveloped and undefended flood plains. (67)
- Reduce flood risk to and from new developments through location, layout and design, including the applications of a sustainable approach to drainage (67a)
- Using opportunities offered by new development to reduce flood risk to communities (67a)
- Only permit development in areas of flood risk when there are no suitable alternative sites in areas of lower flood risk and the benefits of the development outweigh the risk from flooding. (67a)

Sea level rise:

The Lyme Bay and South Devon shoreline management plan (84a) outlines a number of objectives for Torbay including:

- Protection of Maidencombe and built up areas of Torquay, Paignton and Brixham.
- Maintain bathing water beach quality.
- Maintain continuity of the south west coastal path.
- To maintain integrity of the naturally designated sites.
- To protect listed buildings at risk and conservation areas.
- To protect navigation to Torquay and Brixham harbour.

Vulnerability to climate change:

- Reduce risk to society and the environment from climate change and sea level rise (9)
- The shoreline management plan (84a) includes a number of objectives relating management of the coastline including:
 - To minimise and mitigate any adverse impacts that coastal defence may have on the long-term viability of the coastal fishing industry.
 - Where appropriate, to retain and enhance areas and accesses presently used for recreation and amenity purposes.
 - Where possible, to identify areas at risk from erosion and undertake surveys to assess whether previously unknown sites are being damaged or destroyed.
 - To ensure, wherever possible, to minimise and mitigate against any adverse impacts that coastal defence policy may have on them, up to and including recording and excavation.
 - To ensure, wherever possible, that conservation areas, listed buildings and historic parks and gardens are defended from flooding and erosion in a manner consistent with the policies and objectives established within the planning framework.
 - Where possible, to maintain natural coastal processes.
 - Maintain favourable conservation status of coastal management units which contain a Special Area of Conservation / Special Protection Area in line with both the Habitats Directive and MAFP guidelines.
 - To ensure, wherever possible, that wild species and wildlife habitats are conserved and enhanced in line with the UK Biodiversity Action Plan.
 - To take account of, and co-ordinate with, local conservation management plans.

- To ensure, wherever possible, that the geological and geomorphological interests of the Shoreline Management Plan area are conserved.
- To take account of the exiting landscape character of the area and the Character and Natural Areas objectives.
- To take account of both Heritage Coast and Area of Outstanding Natural Beauty objectives.
- To ensure that coastal defence policy does not affect adversely the quality of coastal waters.
- To ensure that coastal defence policy does not affect adversely the dispersion of effluent from waste management operations.
- To ensure that coastal defence policy does not affect adversely the navigational access to and recreational use of port and harbour facilities.
- Mitigate greenhouse gases through appropriate siting and good design in new commercial and industrial development (104a).

5. Maintain and improve environmental quality and assets

- Raise awareness of, and protect biodiversity value of designated and non designated sites and their interconnectivity
- Promote sustainable patterns of development making better use of previously developed land
- Manage soils in recognition of their non-renewable nature
- Protect and enhance landscape features and characteristics
- Ensure retention of diversity and distinctiveness in building design and development patterns
- Protect, enhance and raise awareness of historic assets and their social, economic and environmental value in Torbay
- Recognise and manage flood risks (fluvial, coastal and surface water) and plan development to minimise it
- Recognise the threats of sea level rise along Torbay's coastline

6. Minimise consumption of natural resources:

Renewable Energy:

- Develop an awareness of the need and potential for renewable energy throughout the South West (110)
 - Promote and encourage, rather than restrict, the development of renewable energy resources except where these developments are likely to have an adverse effect on designated conservation sites (historic and natural), or designated landscapes (102)
 - Encourage developers to integrate renewable energy technologies into building design (104a)
 - Careful consideration should be given to new forms of energy generated from renewable sources e.g. wind and tidal energy (68)
 - Promote debate within wider community about the pros and cons of renewable energy and develop and encourage informed opinion and decision making (110)
 - Promote indigenous renewable energy businesses and attract inward investment (110)
 - Remove barriers to physical deployment of renewable energy such that the target of 11-15% electricity generation can be achieved or exceeded by 2010 in a manner that is in line with particular landscape needs of the South West (110)
 - Increase role of renewable energy and Combined Heat and Power (CHP) whilst reducing the adverse environmental impacts of all forms of energy production (9)
 - Encourage a more consistent and transparent approach to the planning process for renewable energy (110)
- Local authorities have a role to identify appropriate sites for development which must have coastal location (e.g. wave power) (104a).
- Encourage the conservation of energy and natural resources in the design and construction of buildings (12)
- Optimise energy and other resource use and performance through building shape, orientation, servicing, detailing and materials (74c)
- To promote the conservation of energy and the reduction of levels of pollution as a commitment towards reducing global warming (12)

Water resources:

- Protect and enhance water resources and aquatic ecosystems (98)
- Promote water efficiency (113)

Minerals:

A number of minerals-related sustainability objectives have been identified in the Devon Minerals Local Plan 2000-2011 (115):

- Strike a balance between the demand for all mineral resources and the need to protect the environment, having regard to the principles of sustainable development
- Protect the quality and the diversity of the County's earth science and nature conservation interest, historic environment, water environment and landscape character
- Prevent the sterilisation of proven mineral resources by other forms of development.

Waste:

- Ensure provision of sufficient space within new developments to allow for separation and collection of waste consistent with the type of development (112)
- Promote public awareness of the problems associated with waste management, and to encourage individuals and communities to take more responsibility for the waste that they create (114)
- Ensure that, where there are threats of serious or irreversible damage to the environment, lack of full scientific certainty shall not be used as a reason for postponing cost-effective measures to prevent environmental degradation (114)

- Minimise any adverse effects on the environment caused by the introduction of waste management facilities, and to enhance the local environment when considering plans for site restoration and after-use (114)
- Ensure that any proposal for a waste management facility is achieved in as sustainable a manner as possible and represents the Best Practicable Environmental Option (114)
- Ensure that the management of waste is as sustainable as possible in accordance with the following waste hierarchy:
 1. Reduction
 2. Re-use
 3. Composting and Material Recycling
 4. Energy Recovery
 5. Final Disposal (114)
- Encourage the provision of waste management facilities close to major centres of population, having regard to their effects on the environment and on the transport infrastructure, taking into account the economic and environmental costs and benefits of using alternative means of transport (114)
- Ensure that, where possible, Devon's waste is treated or disposed of within the South West Region and, in consultation with other Waste Planning Authorities in the Region, to provide for facilities with sufficient capacity to manage the anticipated waste arisings for at least ten years (114)
- Promote the establishment of an effective and integrated network of waste management facilities to serve national, regional, sub-regional and local needs (114)
- Promote construction and demolition of building in accordance with the regional sustainable construction charter (minimise production of waste, provision go information in regard to dealing with any waste generated from demolition) (112)
- Include a waste management audit in every major new development proposal that shows how waste will be beneficially reused (11)
- Provide a framework in which communities take more responsibility for their own waste, and enable sufficient and timely provision of waste management facilities to meet the needs of their communities (101)

Pollution (land, water, air, light, noise)

- Maintain bathing water to standard outlined in the 1976 Bathing Water Directive (63)
- Protect and enhance aquatic ecosystems (98)
- Protect water resources (98)
- Protect the environment from the adverse effects of waste water discharges (95)
- Encourage design which reduces noise, pollution and traffic congestion (75)
- Locate noisy developments in areas where noise will not be such an important consideration or where its impact can be minimised (70)
- Improve air quality for all (9)
- Improve air quality in Torbay through the expeditious resolution of declared Air Quality Management Areas and to reduce the declaration of future AQMSs (54)
- Respect the limits of the natural environment, resources and biodiversity – to improve our environment and ensure that the natural resources needed for life are unimpaired and remain so for future generations (4d).

6. Minimise consumption of natural resource:

- Recognise the need to provide renewable energy and generate discussion on how this can be achieved and assist in meeting targets for renewable energy
- Promote water efficiency and protect water resources
- Strike a balance between the demand for all mineral resources and the need to protect the environment
- Recognise the need for sufficient infrastructure to encourage and raise awareness of the need for sustainable waste management (recognition of the waste hierarchy, proximity principle and self sufficiency)
- Minimise levels of land, air, water, light, noise pollution

8. Baseline - Issues and Opportunities

A baseline study has been carried out in order to identify current sustainability issues relating to Torbay. This identification of issues at an early stage is central to the sustainability appraisal process highlighting problems which could be addressed through plan formulation. It should not be considered an all-encompassing 'State of the Environment' report at a given time but rather a means of identifying current trends relating to Torbay and how these might develop without plan formulation. The section which follows comprises a summary of the key findings from the detailed baseline, a full copy of which has been included in Appendix C. Please note that further detail stemming from this summary is included where relevant within each of the chapters in Part 2.

The baseline study will commence with an overview of the general situation in Torbay to give some context. Key trends identified in the baseline study have been grouped firstly by the 6 high level objectives identified in the SA framework in section 10, then by sub-objectives under each of these. Wherever possible comparators, targets and trends have been given to provide context (their sources are identified in Appendix C).

The overarching issues under each sub objective are then drawn from this and are summarised in a box at the end of each of the 6 High Level Objectives (numbered 1-6)

A number of maps are included for illustrative purposes at the end of Section 8.

Torbay Overview:

Torbay is located on the south coast of Devon and is one of nine Unitary Authorities in the South West. It comprises three main towns of Torquay, Paignton and Brixham which stretch around a sheltered bay (see Figures 2 & 3). These three towns comprise what is commonly termed the English Riviera which is well known as a premier UK resort.

The population of Torbay currently (2005) stands at 132,500, approximately half of which live in Torquay, 37% in Paignton and Brixham, the smallest town, housing 13% of the population. This population is set to increase with growth estimates for Torbay indicating that between 2003-2028 population will grow by 23.31%, one of the highest growth levels in Devon. This compares to a Devon prediction of 20.10% and a South West prediction of 16.47%. With annual patterns indicating more deaths than births per year, the majority of this population growth is likely to be attributed to in-migration, without which population would contract. Seasonally this population fluctuates significantly, swelling by approximately 80,000 people in the summer months.

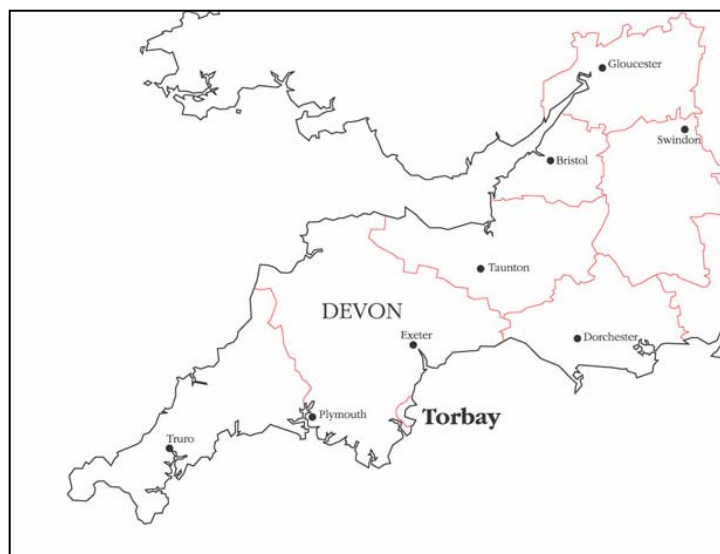


Figure 2: Torbay's geographical situation within the South West (© Torbay Council Licence No: 100022695)

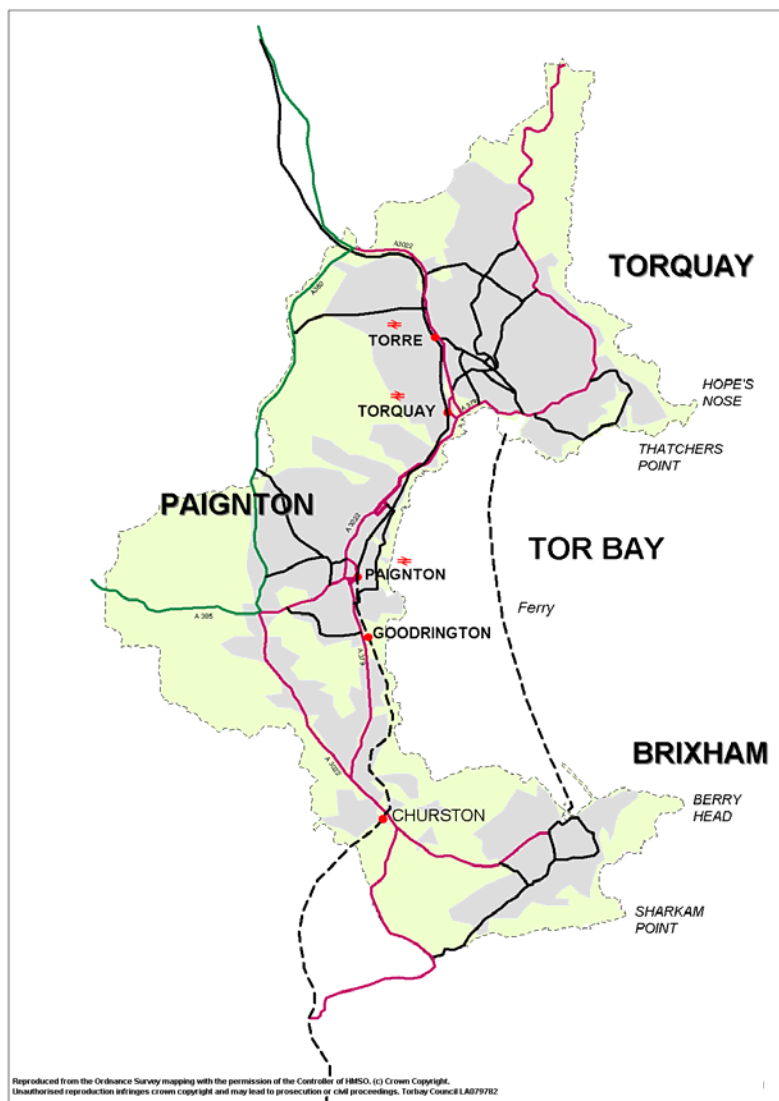


Figure 3: Torbay (Unitary Authority boundary marked by thin dashed line)

Torbay is characterised by high density development. This has perhaps been forced by the natural constraints placed on the area by its surrounding geography. The steep topography makes further development problematic within the towns and the sea forms an absolute barrier to growth to the east. The nature conservation and landscape designations which surround the towns also restricts further growth.

The economy of Torbay has traditionally been based around tourism, the fishing industry at Brixham and in recent years the high-tech industry. As a result of an emphasis on the service sector, the economy of Torbay tends to be of a relatively low wage. There is also evidence that these industries are changing and there is a marked need to adapt the market to address this.

1. Improve Health and Wellbeing:

1.1 *Improve health and wellbeing: (including access to sickness treatment services and positive wellbeing enabling lifestyles free from stress and anxiety)*

- Smoking prevalence in Torbay is in line with the England average at 28%. Between 1998-2002 smoking caused 20% of male and 10% of female deaths.
- An ONS report in March 2005 placed Torbay as second in England and Wales for its suicide and undetermined injury rate. The rankings indicated that this is a problem characteristic of many seaside towns.
- Accessibility to a good quality living environment and public space is essential for positive wellbeing. This is especially important in Torbay which has high density development (21.1 persons per hectare compared to 1.1 in Devon, 3.4 in the South West, 24.5 in Exeter and 35.4 in Bournemouth).
- Torbay's rate of alcohol related death is higher than England and Wales and significantly higher than the South West regional average.

1.2 *Reduce health inequalities: (lower incomes should not increase exposure to health risks or reduce access to healthy lifestyles)*

- Pockets of deprivation exist within Torbay which exacerbate health inequalities. In 2004, 4 SOAs were in the top 10% for multiple deprivation
- There is a significant variation in life expectancy between wards with Roundham and Hyde at 75.6 and Goodrington and Roselands at 82.47. Latest 2001-2003 figures give lowest male life expectancy as 72.4 years in Ellacombe and highest female life expectancy as Shiphay with the Willows as 85.2 years
- A lack of youth provision in deprived areas can lead to other health problems such as high level of teenage conceptions. Torbay has exceeded its required target figures on several occasions over the past 6 years, for teenage conceptions
- Consideration is required of the high proportion of elderly in Torbay who can become socially isolated and experience health inequalities due to poor physical access to health centres/ hospitals.

1.3: *Promote healthy lifestyles, especially routine daily exercise (walking and cycling should be made easy and attractive as routine methods of transport)*

- Obesity is becoming an issue of increasing concern in Torbay with a recent survey indicating that 27% of 15-75 year olds visiting the GP over a 15 month period had a BMI of 30 or greater. Although not directly comparable (due to slightly different categories) a national sample of 14,000 all adults calculated a prevalence of 22% for men and 23% for women.
- In Torbay in 1998 60% of men and 75% of women were active at the desired level. Barriers to physical activities include distance to facilities, safety, street lighting, quality of open spaces and presence or absence of cycle routes and footpaths.
- Car use is high in Torbay. In 2003/4 63% of trips to work were by car and 43% of school children are driven to school

1.4 *Allow for adequate provision of health services*

- Investment needed in healthcare infrastructure in all three towns
- There is a noted under-provision of healthcare in new housing developments (e.g. The Willows and Great Parks)
- The high proportion of elderly residents in Torbay (2004, 23% over 65) compared to national averages (16% nationally) places pressure on existing healthcare.
- Life expectancy in Torbay is slightly above the national average resulting in pressure on nursing homes, residential homes and domiciliary care

KEY TRENDS: Improve health

- High level of mental illness possibly linked to poor job opportunities and localised issues of poor living environment
- High population density in Torbay emphasises the need for good quality public space provision for positive wellbeing
- Health inequalities are apparent in Torbay between social groups and geographical areas.
- Obesity is of increasing concern in Torbay (poor diet and lack of exercise)
- Torbay has a higher than average level of deaths from alcohol abuse
- Recognised need for further provision of *local* and accessible healthcare especially considering the high number of elderly

2. Support communities that meet people's needs:

2.1 Help make suitable housing available and affordable for everyone (cost of appropriate housing relative to disposable incomes)

- House prices:
 - House price inflation has led to an increase in house price of properties in Torbay by 26% per year between 1999-2004 compared to 19.2% at a national level.
 - The affordability ratio of house price to average earnings indicates that property in Torbay is less affordable than both the national and regional figures. The average price for a detached house is over 16 times the mean annual earnings in Torbay.
 - The housing needs survey of 2003 indicates that 3.1% of households in Torbay are in housing need (they can not afford to buy or rent a property at prevailing market levels). This compares to inner London figures of 3.2% and the South West at 1.5%.
- Availability of affordable housing:
 - There is a great shortfall in the provision of affordable housing with a proportion of social rented housing standing at 8.3% in Torbay compared to an England average of 18.8% and regional of 13.6%.
 - The number of those on a waiting list for Registered Social Landlord housing has increased from 981 in 00/01 to 2,555 in 03/04.
 - Torbay's high population projections place additional pressure on provision of affordable housing.
- Homelessness:
 - The number of those accepted as homeless and in priority need rose from 185 in 1999/2000 to 339 in 2002/2003.
 - There is a recognised need to decrease the number of families placed in temporary accommodation (holiday flats and B & Bs) to minimise the disruptive effect on families
- The proportion of second homes is high at 2% compared to 0.7% in England and Wales.
- Torbay has 19 SOAs in the top 10% most deprived in England for living environment (considers condition of housing, central heating, air quality and road accidents). These are indicated in Figure 4.

2.2 Give everyone access to learning training, skills and knowledge (providing people with tools to access satisfying work opportunities)

- Achievement levels of Torbay are at or above the National Level for GCSEs and A-levels.
- Torbay has a higher than England/ SW average for unauthorised pupil absence
- There is a recognised need to promote life long learning in Torbay to enhance job opportunities and increase the number of qualified and experienced employees
- There is a lack of sixth form facilities in Brixham

2.3 Reduce crime and fear of crime (designing out crime, providing passive surveillance, and avoiding dead spaces)

- Fear of crime is high in Torbay. Surveys and consultation exercises carried out in 2004 indicated that 75% of respondents considered crime to be a very or fairly big problem in Torbay. Where 60% of respondents felt safe in their neighbourhood only 28 % felt safe in Torbay as a whole.
- Total recorded offences per, '000 residential population rose from 6.1% (13,405) in 2003/4 to 14,227 in 04/05. National trends for the same time period showed a drop of 6.8%.

2.4 Promote stronger more vibrant communities: (reducing the need to travel away from home to meet needs. Community involvement in local economies.

- Lack of data to establish local trends

2.5 Increase access to and participation in cultural activities: (cultural facilities integrated into developments. Development of environment based visitor attractions)

- Torbay has a wide range of cultural activities

- There is a lack of suitable activities for young people and children in Torbay.
- There is a recognised desire to generate more excitement and buzz through higher profile events of national/ international significance, local street theatre and public art in open spaces and town centres.
- There is a recognised need for a more visible physical base for cultural activities for exhibitions, performances, events, rehearsals and informal leisure (especially for young people)
- Accessibility to community facilities can be limited by income deprivation.
- Investment is required to improve the quality of playing pitches and aging leisure facilities in Torbay.
- 30% of sporting infrastructure is considered to be in poor or very poor condition.

2.6 Provision of Infrastructure and services inline with rate of population increase

- Over the period 2003 – 2028 Torbay is predicted to have highest growth rates in Devon at 23.3% compared to Devon at 20.10% and the South West at 16.47%.

KEY TRENDS: Support communities that meet people's needs

- Extremely high deficiency of affordable housing provision
- Increasing number of homeless people
- Extremely high number of people in Torbay living in area of living environment deprivation.
- Need for improved opportunities for life long learning to access better jobs
- High fear of crime exists in Torbay
- Accessibility to good quality cultural and recreational activities can be limited by income deprivation and poor quality sports infrastructure
- Recognised need for creation of public spaces for cultural activities
- Recognised need to provide sufficient infrastructure to meet the needs of the projected population growth.

3. Develop the economy in ways that meet people's needs

3.1 Promote diversification of the economy to provide a range of job opportunities.

(job satisfaction, jobs people want to do rather than have to do. Promotion of year round tourism, especially in coastal and market towns)

- Torbay's economy suffers from a peripheral location and poor accessibility
- Income levels are low in Torbay: In 2005 Torbay's Gross Annual Pay was £17,110 compared to the South West average of £19,492 and an England average of £22,542.
- Economic sectors:
 - A low proportion of those working are in the professional sector indicating Torbay's lack of opportunities for graduates and explaining an out-migration of young people of working age
 - There has been a decline in the manufacturing sector related largely to closure of Nortel and the shortage of readily available sites for light industry. The proportion of GDP derived from industry decreased from 13.1% of GDP in 1992 to 8% in 2002.
 - A decline in employment in the fishing industry (Brixham's main industry) is expected to continue following the review of the EU CAP. Between 1992-2002 the fleet declined from 139 vessels to 101.
 - A large proportion of the population are employed in the tourist industry in part time and seasonal, low paid work. (A 1997 ONS survey indicated 32.56% of employment was attributed to hotels, restaurants and distribution)

3.2 Help everyone afford a comfortable standard of living: (reducing cash cost (need to travel), high fares and high housing costs as well as increasing income)

- There is a heavy reliance on the tourism industry for employment, which creates part-time, seasonal, often unskilled and thus low paid work.
- Unemployment is in line with the national average but fluctuates significantly due to the dominance of the tourist industry.
- The issue of low income levels has also been highlighted in a Viewpoint Survey in 2004 in which 67.7% of respondents felt that wage levels and local cost of living had got worse over the preceding 3 years.

3.3 Reduce poverty and income inequality: (levelling up incomes, reducing the disadvantage caused by not being able to afford a car)

- 27.8% of Torbay population live in an area within the top 20% employment deprived.
- There is a recognised need to promote life-long learning further, to help people develop their skills and knowledge to increase income levels.
- 3 SOAs in Torbay are within the top 10% in the ranking for education deprivation.

3.4 Meet local needs locally (Contribute to community strength, businesses meeting local need, reducing transport intensity of economy)

- Increasing population growth and seasonal fluctuations have implications for the provision of local, year round services in Torbay.
- Local provision of services is especially important in Torbay to meet the needs of the elderly and those in deprived areas who have restricted access to a car.

3.5 Increase the circulation of wealth within the region (Encourage businesses to spend money within Torbay encouraging economic integration and security)

- Torbay has a high rate of business start ups indicating local entrepreneurship and potential to develop local economies

3.6 Harness the economic potential of the coast in a sustainable way: (carefully planning to delivery jobs which feed off but do not damage the environment)

- There is recognition of the need to adapt to market changes from traditional long stay bucket and spade holidays to short weekend breaks and the new markets in education, green tourism and business markets.
- Coastal erosion outside of the defended area averages 0.2m per year

- Torbay Sensitive Marine Area contains a rich aggregation of sublittoral species and an expanse of eelgrass bed. Potential threats to this environment include over intensive use of the harbour.

3.7 Reduce vulnerability of the economy to climate change and harness opportunities arising (prepare for consequences of climate change – weather, water, crops and increased desire to live in the South West)

- Torbay's only rail link to Exeter and the UK follows a coastal route vulnerable to disruption by storm damage. This is likely to worsen as a result of climate change
- Climate change will bring increased requirements for outdoor shading for buildings and public open spaces, which will be particularly relevant in a resort such as Torbay.
- By the 2080's Torbay could experience an increase in mean annual temperature of 3.3°C under a high emissions scenario which may increase demand for access to public open spaces, rivers and coast. This has an implication in Torbay for both increase in long term residents and visiting tourists.
- Increased temperatures associated with climate change could extend the tourist season and increase number of domestic vacations in place of foreign holidays.

See section 6.2 for water conservation issues.

3.8 Contribute to the regeneration, quality and diversity of the tourism industry

- Tourism accounts for 1.45 million staying visitors generating a direct and indirect spend of £442 million per annum.
- The number of tourist nights has fallen from 12 million tourist nights in the 1970s to 8.5 million in 2003. Figures now appear static however, there is risk that further decline will affect viability of many operators in the sector.
- Compared to other Devon Districts, Torbay is the only one where the percentage change in tourist nights has decreased between 1999 – 2002. This compares to growth of over 30% in mid Devon and 40% in Exeter.
- Torbay has placed unmistakeable reliance on core market and has not maximised opportunities to build new markets.
- Torbay needs to adapt to increasing demand for quality, convenience and security, 1- 3 night holidays, group holidays.
- There is recognition of the need to adapt to market changes from traditional long stay bucket and spade holidays to short weekend breaks and the new markets in education, green tourism and business markets.
- Torbay has a number of designated tourism areas known as Principal Holiday Accommodation Areas. The Adopted Torbay Local Plan policies for PHAAs seeks to retain holiday accommodation and to maintain holiday character, sustaining a shop window for tourism. Although the majority of these areas successfully retain holiday accommodation there is concern in a number of areas e.g. Babbacombe Downs, Meadfoot Road and Preston Seafront where there has been pressure for accommodation to be lost to residential use.
- Torbay has a number of strengths relating to its tourism including:
 - Natural resources
 - Quality visitor attractions
 - Significant heritage sites
 - Mild micro climate
 - Diversity and distinctiveness of 3 towns
- Torbay has a number of weaknesses relating to its tourism sector including:
 - Impact of drunks and beggars
 - Lack of comprehensive alcohol management process
 - Kingskerswell bypass – lack of
 - Not all of tourism and related sectors engaging in the quality agenda
 - Regional airlinks (domestic and overseas) still developing
 - Lack of new and innovative tourism businesses
 - The fundamental seasonality of the industry
 - Lack of event development strategy

3.9 Reduce reliance on seasonal and part time work within Torbay

- There is a heavy reliance on the tourism industry for employment, which creates part-time, seasonal, often unskilled and thus low paid work.
- Recognition that tourism is dependent on maintaining Torbay's high quality natural environment and landscapes.

KEY TRENDS: Develop the economy in ways that meet people's needs

- Torbay's economy suffers from its peripheral location.
- Peripherality is exacerbated by poor transport links by road (heavily congested) and rail links which are subject to closure by storm damage
- Limited job opportunities available for professionals
- Low income levels
- Decline in fishing and manufacturing
- Heavy reliance on tourism which provides seasonal and low paid work opportunities
- Recognised need to promote life long learning to minimise income inequality
- High rates of business start ups in Torbay offer opportunities for business, development and diversification.
- High proportion of elderly re-emphasises the need to provide services locally
- Climate change has implications for infrastructure provision associated with high numbers of tourists and possible permanent in-migration of residents and businesses.
- Recognised need to adapt to new sustainable markets in tourism
- Possible increase in domestic holidays to Torbay as a result of warmer summers associated with climate change.

4. Provide access to meet people's needs with least damage to communities and the environment

4.1 Reduce the need/desire to travel by car: (car dependence deepens social exclusion and adds to pressure for unsustainable land use patterns. Promote non-car tourism, reduce parking provision and encourage car sharing)

- Car use is high in Torbay. In 2003/4 63% of trips to work were by car and 43% of school children are driven to school
- Small pockets of congestion are apparent in Torbay at peak times around in particular, schools and large employers.
- 27% of households in Torbay (in line with national figures) do not own a vehicle.
- 22% of new dwellings completed in 2003/04 and 2004/05 had no parking provision
- The 2001 census indicated that Torbay has a higher number of people walking to work than the national and regional average.

4.2 Reduce the need/desire to travel by air (Develop fast alternatives, especially fast rails links to Eire, France and Spain)

- The number of passengers travelling by air in the South West has more than tripled between 1994 (1.9 million) and 2004 (6.4 million)
- The number of take offs and landings in the South West has nearly doubled between 1994 (62.3 thousand) and 2004 (112.6 thousand)

4.3 Help everyone access basic services easily, safely and affordably (without the need to travel)

- Accessibility to health services is problematic for the elderly and social isolated with concern over accessibility by public transport
- Torbay is experiencing a gradual fall in the number of people killed or seriously injured in road accidents by almost 50% since 1999. Pedestrian fatal and serious casualties are also decreasing.

4.4 Make public transport, cycling and walking easier and more attractive:

- Torbay is experiencing increased level of bus patronage from 6,430,466 in 2003/2004 to 6,498,046 in 2004/05
- There is a recognised need for more local transport interchange points to create easier use of public transport.
- Levels of cycling in Torbay are low but increasing. There are a number of recognised barriers to cycling in need for further investment in cycle infrastructure (rack and lanes), poor lighting and hilly topography.
- Railway access to Torbay is important for school children, employees and holiday makers. All three stations are in need of improvement.

4.5 Encourage a switch from transporting freight by road to rail or water:

- There are a number of rail sidings in Torbay but they are not used at present for freight. The majority of freight is transported by road.

KEY TRENDS: Provide access to meet people's needs with least damage to communities and the environment

- Approximately 1/4 of households in Torbay do not have access to a car
- A high proportion of residents of Torbay travel to work or school by car
- Difficulties with accessibility to healthcare for socially isolated groups (e.g. low income and elderly)
- There is a recognised need for further public transport interchanges.
- There are infrastructure and topographical barriers to cycling in Torbay
- Bus use is increasing
- Freight is largely transported into and out of Torbay by road

5. Maintain and improve environmental quality and assets

5.1 *Protect and enhance habitats and species (taking account of climate change)*

- There are a high number and variety of non-designated areas in Torbay which hold high ecological value. Such areas include:
 - **Calcareous grasslands** of high ecological importance support a large number of localised and nationally important species. Threatened by dog fouling and trampling.
 - **Seacliff and cliff tops:** Importance for breeding sea birds (especially at Berry Head). Under pressure from poor management.
 - **Heathland:** Only one patch of heathland remains in Torbay at Berry Head of very high ecological value as a rare habitat. Management is required.
 - **Farmland and Hedgerows:** Importance of maintaining the link between habitats via ancient hedgerows and green lanes.
 - **Cirl Bunting:** Need to continue the increase in number of breeding pairs of cirl bunting. Specific Management required where pairs have been spotted.
 - **Woodland:** High proportion of undeveloped land in Torbay is woodland. Torbay's Ash/ Maple woodlands on limestone soil are of exceptional ecological value and in need of management to address deterioration caused by invasion by alien species, encroachment from neighbouring development and intensive recreational use.
 - **Urban habitats:** These habitats are being degraded by intensive recreational pressures, fragmentation, over-intensive management of public open space and highway verges and development of open spaces.
- Torbay's 12 SSSIs are in good condition with 92.66 in favourable condition compared with 73.42% in the South West.
- Torbay has 4 LNRs which provide an important opportunity for access to local wildlife and geological features.
- Presence of European designations such as the cSAC designations in Torbay at Berry Head which includes the presence of Annex I Habitats and Annex II species. Other species present in Torbay and protected by the Habitats Directive or Wildlife and Countryside Act include bottlenose dolphins, harbour porpoise and basking shark.
- Nationally important area for winter roosting bird species.
- Berry Head is a National Nature Reserve for importance in wildlife habitat and geographical formations.
- Presence of an Area of Special Protection at Berry Head to protect sea bird colonies from disturbance by sea craft during breeding season.
- Today's coastline is part of a Sensitive Marine Area.

All designated sites of nature conservation value are indicated in Figure 5.

5.2 *Promote the conservation and wise use of land (avoid development which leads to loss of food production, biodiversity, flood storage, groundwater recharges)*

- There is only a limited amount of high grade agricultural land in Torbay (see Figure 7).
- Torbay's average density is high at 24.5 persons per hectare compared to Devon (1.1) and the South West (2.1) supporting the efficient use of land and preventing urban sprawl
- Current development patterns in Torbay are such that traditional high densities are maintained through a continuing high number of conversions and redevelopments.
- There is an increasingly recognised role for green spaces in providing flood storage areas

5.3 *Protect and enhance landscape and townscape (diversity is a major strength for the south west, new development should take account of this)*

- The South Devon AONB faces pressures from development, in particular, barn conversions to residential use. A further concern surrounds light pollution associated with encroaching development adjacent to the Brixham AONB boundary.
- Due to the urban nature of Torbay it is essential to retain surrounding natural landscapes to prevent urban sprawl and emphasise rural character. Many of these areas are designated (see Figure 6).
- Torbay has a high quality coastal landscape recognised by a Coastal Preservation Area to safeguard its unspoilt nature.
- The stock of trees in Torbay is in decline as few new saplings are planted.

- The shoreline management plans states that coastal management should take the course of selectively holding the line. The 'do nothing' and retreat approach is not viable as this would lead to eventual failure of coastal defences with a significant economic impact including loss of the main road and parts of the 3 towns.
- To advance the line is not comparable with the processes at work in the cell.
- Torbay has 46 Urban Landscape Protection Areas (ULPAs) marking vantage points, amenity open space or landmarks. Due to Torbay's high density development it is essential that these are maintained.
- Torbay is well known for its formal gardens and parks which form an integral part of the tourist infrastructure and should be maintained and protected.

All landscape designations are indicated in Figure 6.

5.4 Value and protect diversity and local distinctiveness including rural ways of life: *(avoid suburbanisation of the countryside)*

- Torbay has a stretch of unspoilt areas containing historic and traditional buildings designated as an Area of Great Landscape Value which should be protected for its distinctive local character.
- A range of policies in the Adopted Torbay Local Plan seek to prevent urban sprawl and restrict development in the countryside (eg. H14?)

5.5 Maintain and enhance cultural and historic assets (not just designated sites)

- Torbay has 6 Regionally Important Geological Sites with more pending approval. Accessibility to these sites should be maintained and carefully managed.
- Torbay has a number of listed buildings (860), 44 of which are at risk.
- There are seven historic parks and gardens in Torbay of which their condition is unknown
- Torbay has 24 conservation areas some of the low density areas are threatened by inappropriate development such as extensions, changes in boundary features and building design.
- There is a recognised lack of community involvement in heritage and poor interpretative material
- The fabric of many buildings, structures and open spaces are in poor condition
- Torbay has an earth heritage of national and international importance. This has the potential to create new niche markets in tourism in the future

All historic assets are indicated in Figure 8.

5.6 Reduce vulnerability to flooding, sea level rise (taking account of climate change) *(existing settlements to plan for increasing risk)*

- Due to its coastal location, Torbay is at risk of future coastal erosion linked to increased storminess, associated with climate change
- Lyme Bay and South Devon, The Shoreline Management Plan (1998) indicated that the majority of Torbay's coastline is stable in terms of erosion laceration rates. The exceptions are around Hopes Nose, Goodrington Sands and Berry Head where overall trends are unknown. The coastline is documented to be retreating around the Oddicombe Beach / Petit Tor Point Area.
- At present erosion levels fluctuate but are generally low creating stable beaches. However, localised areas of cliff instability exist eg. at Watcombe Head and Oddicombe Beach.
- Possible impacts from climate change includes wetter winters, drier summers, heavy winter precipitation, sea level rise and more frequent extreme sea levels.
- Sea level rise in Torbay is estimated at 2.5mm per annum.
- Torbay has a history of flash floods linked to high number of hard surfaces, steep topography and reduced lag time. The frequency of such events is likely to increase in parallel to an increasing number of winter depressions. The Devon County Council Strategy for climate change (2005) predicts that by the 2050s Torbay is likely to experience a 14 – 18% increase in mean winter precipital and a 26 – 30% increase by the 2080s.
- Since May 1999, Torbay has suffered 8 incidents of major flooding which has caused 500 properties to flood.

- 19.2km of ordinary watercourses have been classified as critical by Torbay Council and the Environment Agency due to their potential for placing a large number of people at risk from flooding.
- There is an increasingly recognised role for green spaces in providing flood storage areas
- Culverts and public sewers in Torbay are at capacity so future development should not increase discharge of water to these sources.
- Torquay, Paignton, Goodrington and Brixham all contain conservation areas with associated listed buildings within 1km of the shore.
- Torbay has a number of coastal defences including sea walls, revetments to harbour walls, groynes, natural beaches and cliffs
- A number of areas are susceptible to coastal flooding including Torre Abbey, Livermead, Paignton, Goodrington Sands, Broadsands and Clennon Valley.

5.7 Minimise habitat fragmentation and provide opportunities for new habitat creation or restoration

- Although it is recognised at a national level that fragmentation through for example; removal of hedgerows is increasing there is no local data available at present to quantify this.

KEY TRENDS: Maintain and improve environmental quality and assets

- High quality non-designated habitats exist in Torbay which require protection
- Torbay has a high number of designated sites of nature conservation value.
- High density development in Torbay's urban areas protects surrounding greenfield areas from unnecessary development
- Torbay's countryside is protected by a high number of landscape designations.
- There are a number of buildings at risk in Torbay and the condition of Historic Parks and Gardens is unknown
- Concern over inappropriate development in conservation areas
- Torbay has a history of flooding in a number of locations.

6. Minimise consumption of natural resources

6.1 *Reduce non-renewable energy consumption and 'greenhouse' emissions: (design out the need to use energy, improve renewable energy technologies)*

- There are limited opportunities for Torbay to develop energy sources from wind power due to its largely urbanised nature and large number of designated landscapes
- Technology for alternative sources of renewable energy is in relatively early stages of development and lacks finance and infrastructure for distribution
- There is a recognised need for better designed houses to reduce future energy demand.

6.2 *Keep water consumption within local carrying capacity limits (minimise water consumption, maximise use of rainwater/ grey water)*

- Reduced water availability is expected as summer months become drier as a result of climate change. The Devon County Councils Strategy for climate change predicts that in Torbay climate change will cause a 15 – 16% reduction in mean summer precipitation by the 2020s (under a high emission scenario), A 31 – 32% reduction by 2050s and 54 – 56% reduction by the 2080s. These percentage changes from the baseline (1961 – 1990) are comparably higher than most other areas in Devon.
- Torbay's water supply is derived from Roadford Reservoir, the largest reservoir in Devon which currently meets Torbay's demands even in peak summer months when population increases by 35% due to the impact of tourists in Torbay, this has a notable impact on total water supply causing a corresponding dip in water supply at Roadford Reservoir in August to September.

6.3 *Minimise consumption and extraction of minerals: (maximise reuse of construction material, provision of reuse and recycling)*

- Only one operational quarry remains in Torbay. The majority of quarried material is sourced from a number of quarries in the surrounding area.
- There is a lack of data available on use of recycled material in construction waste but data is likely to become available as a result of new Government monitoring requirements.

6.4 *Reduce waste not put to any use: (avoid creating waste at source, reuse, recycle, digestion and composting are better than disposal)*

- Torbay's household recycling/ composting rate was 15.32%. This compares to a target for the same period of 15.68%
- Increases in both population and amount of waste produced per person has resulted in perceived future difficulties in meeting recycling targets set for 2010/11.
- Facilities required for recovery of energy from waste may not be compatible with Torbay's image as a major tourist centre.
- There is a recognised need to develop further waste facilities in Torbay as existing facilities are reaching capacity.

6.5 *Minimise land, water, air, light, noise and genetic pollution: (minimise diffuse and point source pollution, reduce traffic emissions)*

- Limited data is available on water quality in Torbay's inland watercourse (see 6.6 for coastal waters).
- No data has been saved for light pollution in Torbay.
- Air quality is good in Torbay, despite evidence of localised air quality issues at a small number of roadside locations. However, there remain concerns that air pollution may increase in parallel to increases in road traffic.
- Little data is available on noise pollution in Torbay. There are no significant issues although ambient noise sources include transport at peak times and pockets of elevated levels surrounding the evening economy.
- A GIS (Geographical Information System) database of land quality and past use is being established. However, it is recognised that contaminated sites largely consist of land formerly used for gas works tipping, quarrying and pits and some railway and industrial land.

- Torbay's bathing water quality is high. Only 4 out of 217 Environment Agency samples tested for the Bathing Water Directive over the period 1990-2004 were of poor quality. The most recent of these was in 1997, since when all samples have been of good or excellent quality.

6.6 Maintain and enhance the quality of Torbay's beaches and coastal waters

- Torbay's beaches are of high quality receiving in 2004, 3 Blue Flag Awards, 7 Seaside Award Beaches and 4 Seaside Awards for rural beaches.

KEY TRENDS: Minimise consumption of natural resources

- Limited opportunities to develop renewable energy in Torbay
- Recognised need for new houses to adopt a more sustainable house design
- Majority of minerals extracted are sourced from outside of Torbay
- Concern over establishing sustainable solutions to deal with increasing amounts of waste generated from Torbay's increasing population.
- There are a number of contaminated sites in Torbay which are largely derived from tipping, quarrying, gas works, former railway and industrial land.
- Air quality is generally good.
- Bathing water quality is high.
- Torbay has a number of award winning beaches.

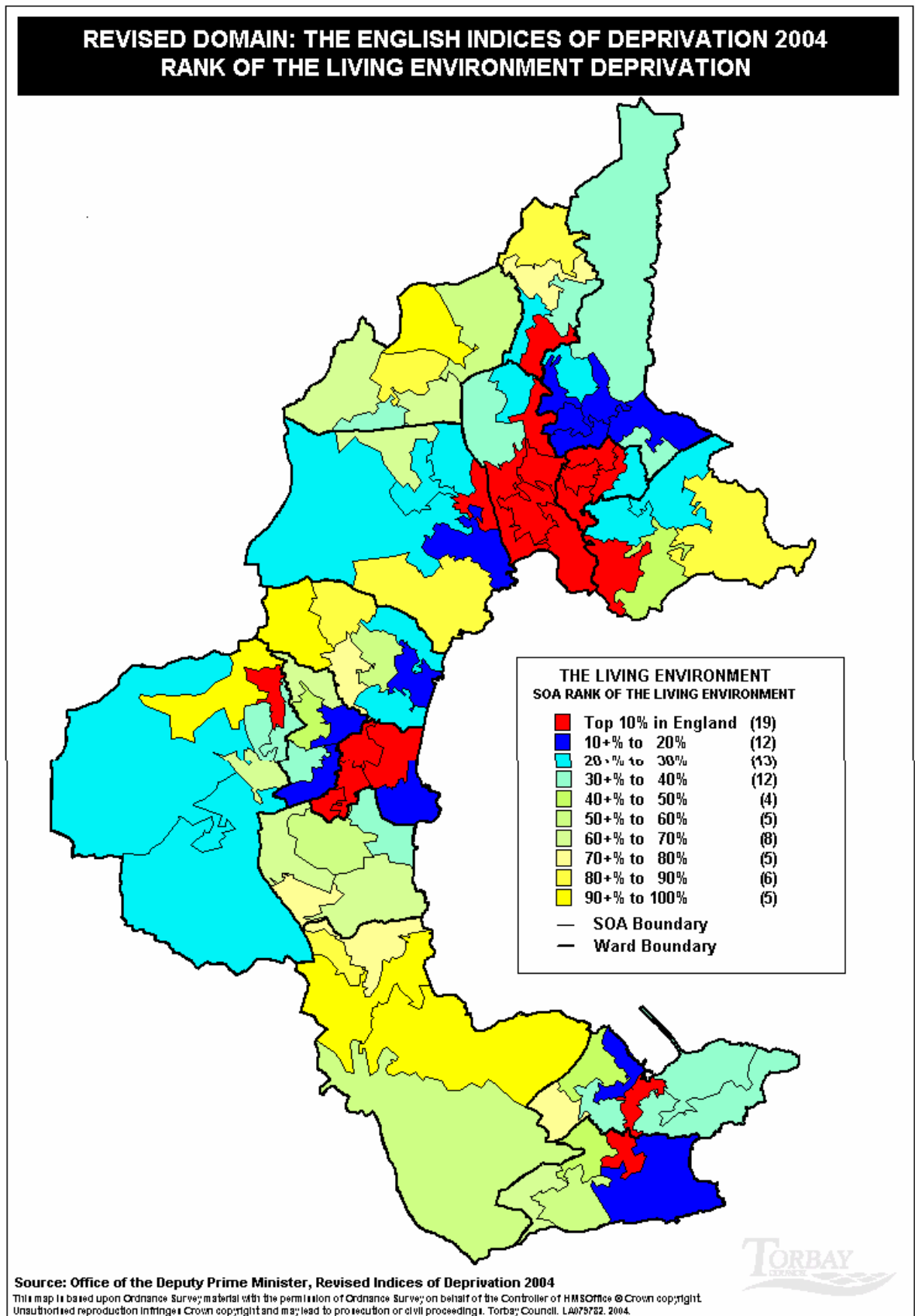


Figure 4: Indices of living environment deprivation (ODPM 2004)

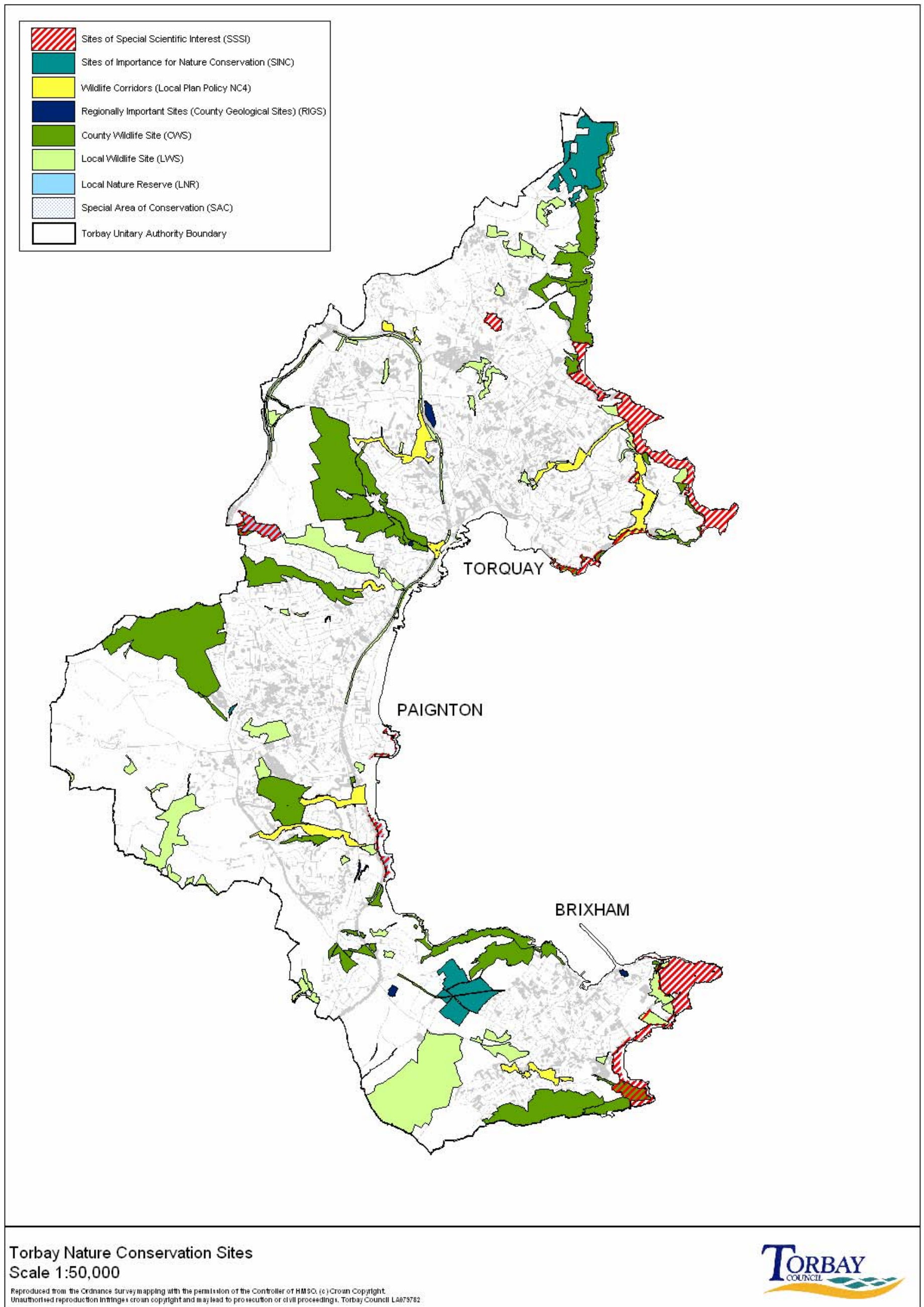
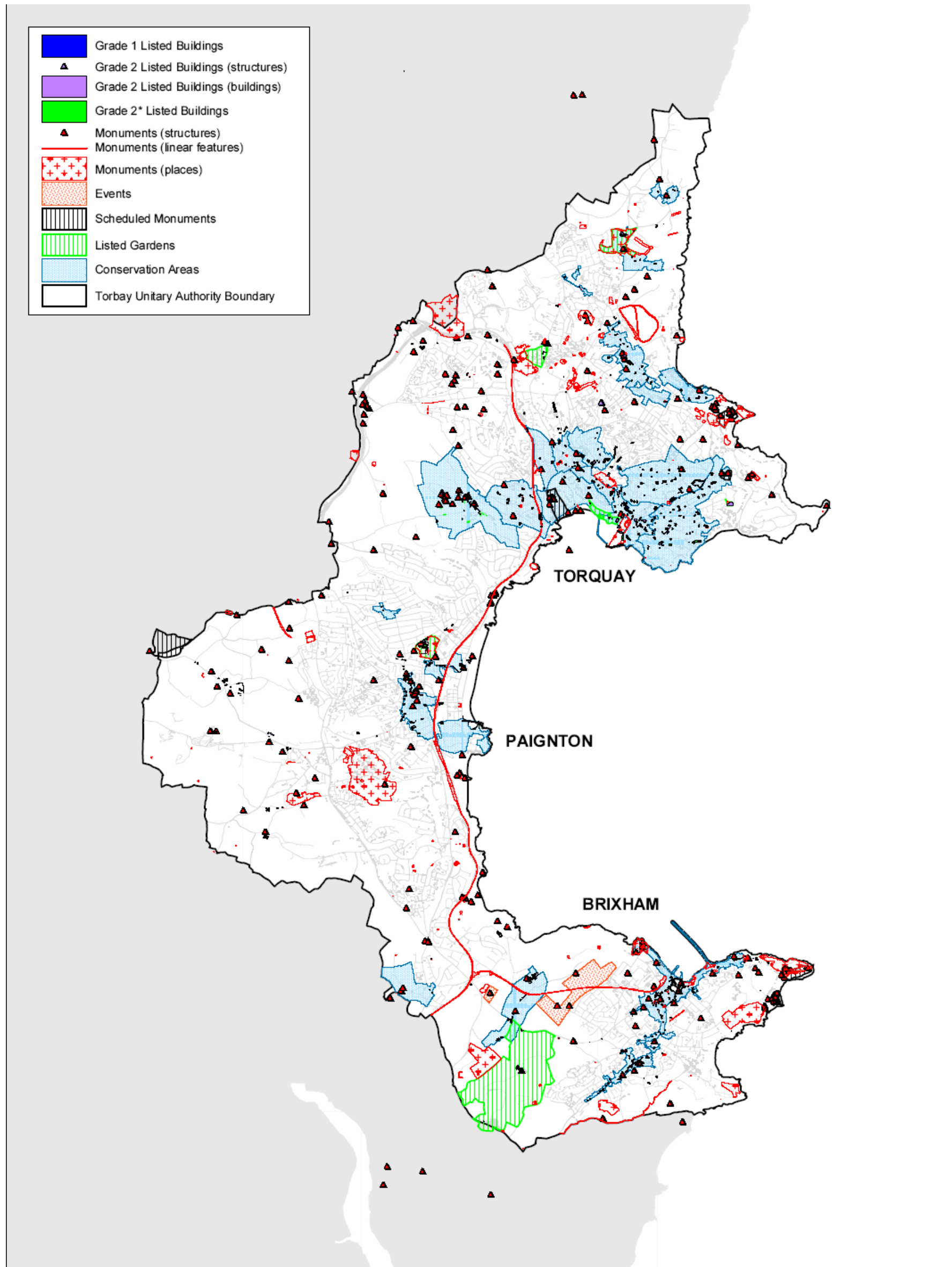


Figure 5: Torbay Nature Conservation Sites (Source: Torbay Adopted Local Plan 1995 – 2011)



Torbay Historic Environment Designations
Scale 1:50,000

Reproduced from the Ordnance Survey mapping with the permission of the Controller of HMSO. (c) Crown Copyright.
Unauthorised reproduction infringes crown copyright and may lead to prosecution or civil proceedings. Torbay Council LA079782



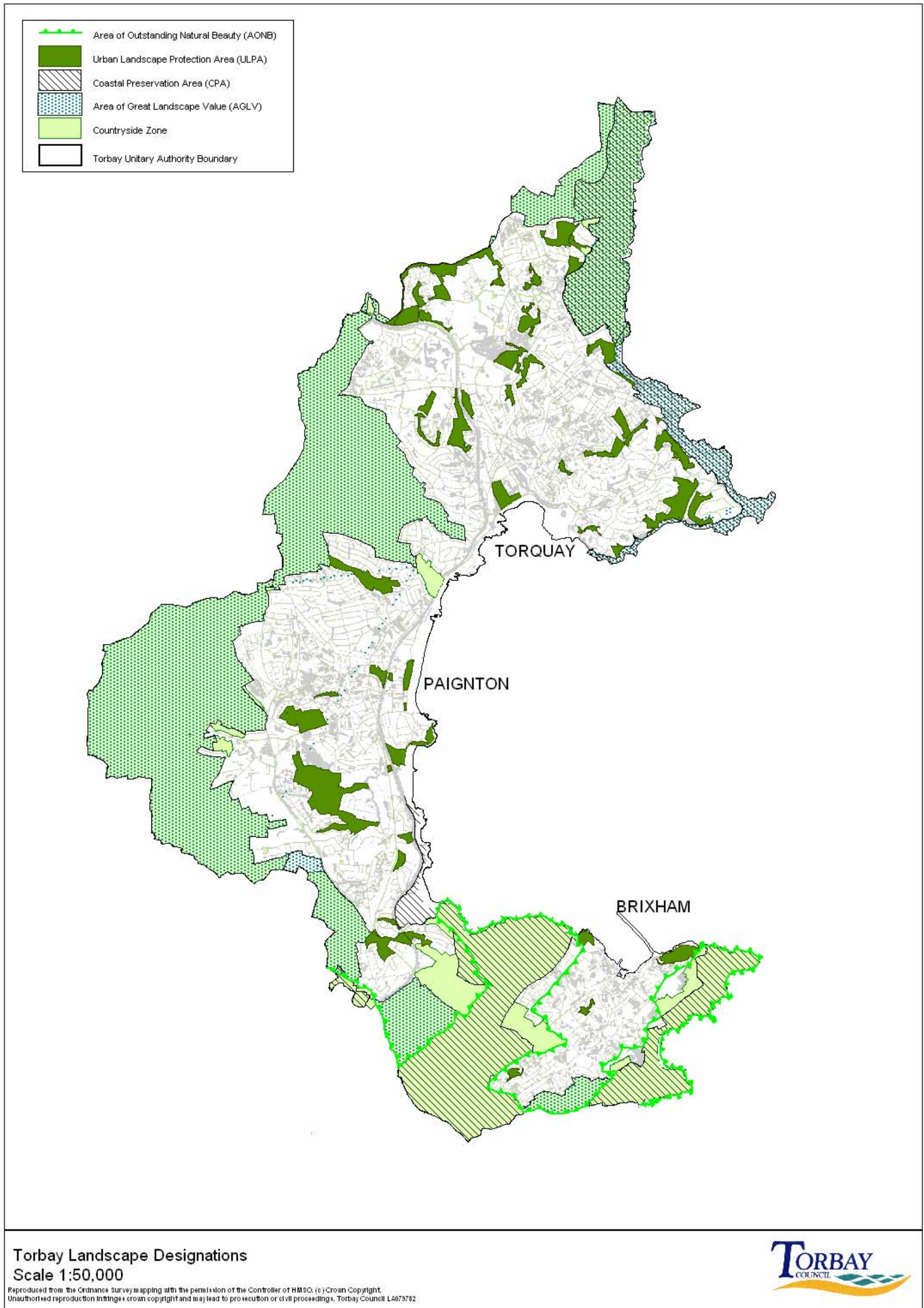


Figure 6: Torbay Landscape Designations (Source: Adopted Torbay Local Plan 1995 – 2011)

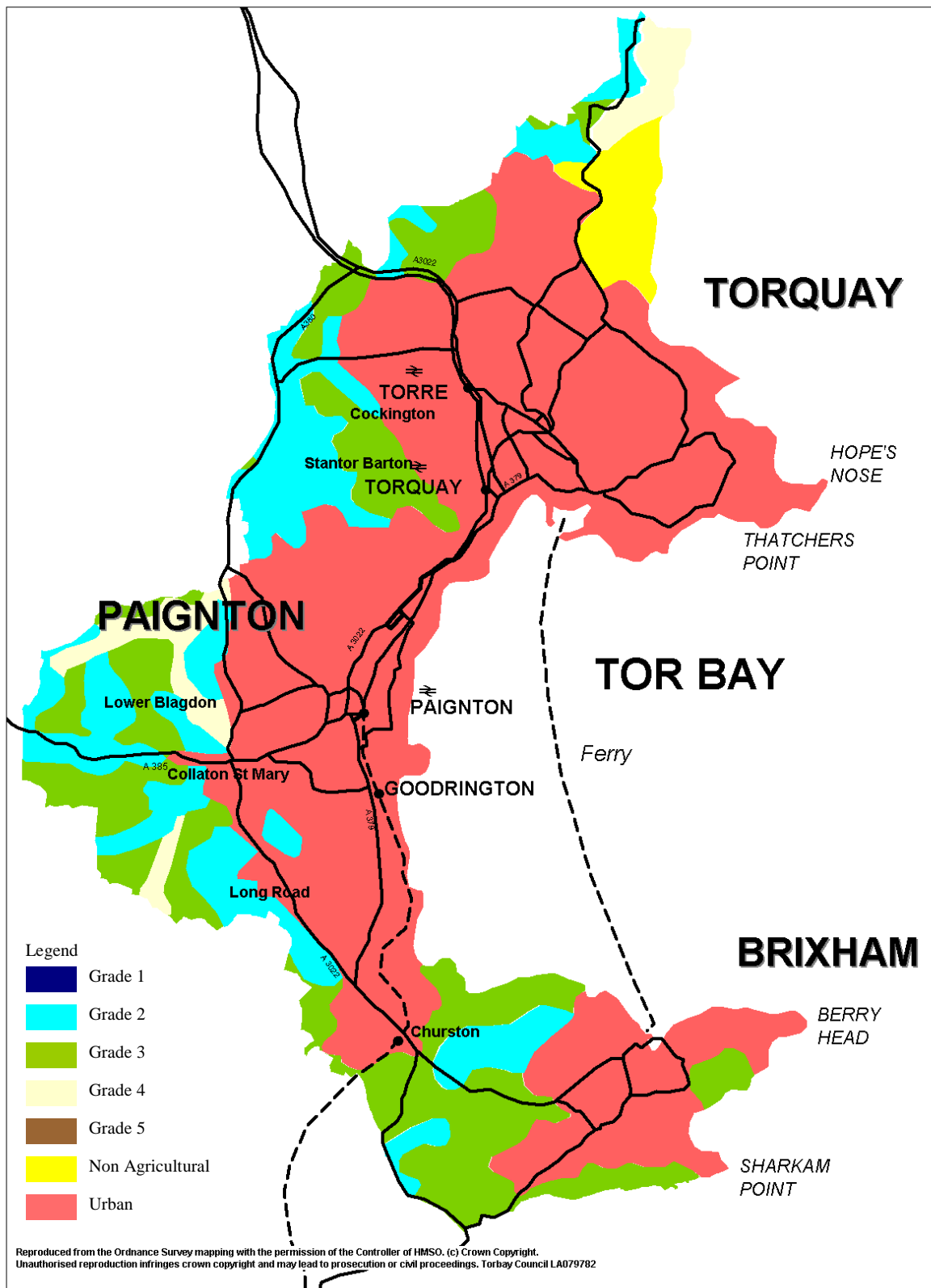


Figure 7: Agricultural Land Classification (DEFRA 2005)

9. Data Gaps:

There remain a number of trends in Torbay which can not yet be identified due to a lack of data and information. The following further information would be beneficial in trend analysis.

1. Improve Health:

- Currently limited data available on the extent which people have healthy lifestyles and the level of exercise people undertake.
- Data on obesity levels by ward would be useful to help target particular geographical areas.
- Levels of stress and anxiety are difficult to measure due to their qualitative nature.
- Quantified information needs of the health service.

2. Support communities that meet people's need:

- Range, diversity, accessibility and participation in cultural activities.
- Number of local trading schemes and the support they receive from the local community.
- Difficulties noted on determining the strength and vibrancy of communities

3. Develop the economy in ways that meet people's needs

- Little information available on the type and variety of work opportunities in Torbay.
- Figures on circulation of wealth
- Cost of living relative to other areas
- Difficulties in determining the extent to which businesses meet local needs.
- Limited information on the number and frequency of farmers markets.
- Limited information available on levels of job satisfaction in Torbay.
- Difficulties associated with measuring the amount businesses spend within the region.
- Difficulties in assessing the exact impact of climate change in terms of number of visitors to the area or in-migration of residents.
- Difficulty in measuring the quality and diversity of tourism.

4. Provide access to meet people's needs with least damage to communities and the environment

- Limited information available on affordability of public transport.
- Limited data available on noise, vibration and community severance caused by road traffic.
- No localised information available on the number of people travelling by air transport to travel to or from Torbay.
- Limited information available on the quantities and types of freight transported by rail or water.

5. Maintain and improve environmental quality and assets

- Difficult at present to identify the effect of climate change on biodiversity.
- Condition of historic parks and gardens
- Rates of loss of Torbay's hedgerows (particularly in regard to wildlife corridors)
- Limited information on the loss of trees in Torbay or rates of replanting
- Mapping of the area and condition of Torbay's calcareous grasslands would be useful as a means of determining damage to/ enhancement of such environments.
- Condition / management requirements of Local Nature Reserves.
- Condition of ancient woodlands
- Up to date information on the condition of LWS, CWS and RIGs and their management requirements.
- Habitat fragmentation.
- Condition and management of National Nature Reserve at Berry Head
- The condition or management requirements of scheduled monuments
- Currently limited data available on diversity and local distinctiveness
- Limited information available on appreciation of cultural and historic wealth or assets

- Currently limited information available on the quality of landscapes and townscapes outside of conservation areas. This will be addressed through the Urban Design Strategy which will include character appraisals.

In relation to biodiversity data it is anticipated that further information is likely to arise in parallel to development of Torbay's Biodiversity Action Plan. It may be possible to use indicator species such as the Horseshoe Bat, Cirl Bunting and area of calcareous grassland and woodland one the BAP has fully developed.

6. *Minimise Consumption of natural resources:*

- Limited info available on the use of grey water / rainwater schemes.
- No data available on noise levels in Torbay
- Difficulties in accessing information on the amount of renewable energy bought or generated in Torbay.
- No information available on the amount of construction material that is recycled.
- Lack of information on water quality of the minor watercourses in Torbay.
- No information available on light pollution.
- Limited information available on recycled material in construction work.

It is recognised that many of these issues are qualitative and may never have readily accessible data. This means they are unable to be included in the list of SA indicators. Despite difficulties associated with measuring these issues, they remain within the SA Framework as they should be considered when testing the plan.

10. Sustainability Appraisal Framework

Purpose of Sustainability Appraisal Framework: An overarching Sustainability Appraisal Framework has been identified as a means of describing, analysing and comparing sustainability effects of the plan. This framework comprises a set of:

- Sustainability appraisal objectives with which to test the objectives of each plan or to compare effects of alternatives.
- Sustainability indicators with which to measure the effects of the plan in the future

One overarching set of sustainability appraisal objectives and indicators has been devised and is included within this section.

Sustainability Appraisal Objectives

Methodology for selection of SA Objectives: In accordance with advice from the South West Regional Assembly the sustainability objectives adopted for this appraisal have been derived from the Strategic Sustainability Assessment of the South West Regional Spatial Strategy.

This framework comprises a two tier structure of 6 broad 'High level objectives' taken from the Regional Sustainable Development Framework explained by 31 more specific 'detailed questions' or sub-objectives outlined in table 4. The Regional Assembly has described how this Regional Sustainable Development Framework 'reflects both national policies and specific regional issues and concerns, drew on a wide range of expertise and extensive consultation, and was endorsed by key regional organisations including the Regional Assembly'.

As the Regional Spatial Strategy and Torbay Local Development Framework consider different geographical areas with different issues it is important to ensure that the framework set out is relevant to Torbay. Having carried out a detailed baseline analysis (see Section 9) a number of locally specific issues have been identified which need particular attention, including for example, the need to diversify the economy, prepare for population increases minimise habitat fragmentation and protect Torbay's beaches and coastal waters. *Amendments to the RSS/SSA framework to account for these local characteristics are noted in italics in table 4.*

It has been important to separate these issues to ensure that they are given due attention in the appraisal process.

There are a small number of detailed questions (effectively sub-objectives) which do not have any Torbay baseline issues relating to them. This is often due to their qualitative nature limiting provision of quantitative trends. However it is recognised that these still represent valid sustainability issues which should be considered in relation to future development in Torbay and are thus included in the framework.

Although the number of objectives is in excess of the recommended 15-25 it is anticipated that not all the sub objectives will be relevant to that particular plan, to each of the DPDs and SPDs considered. Each DPD/SPD specific chapter in Part 2 contains a list of those objectives which will be used to test the plan (derived from the comprehensive list). Where SA objectives are clearly not relevant these will be identified and eliminated, with reasoning. This will result in a lower number of objectives coming forward for the final detailed appraisal of each DPD / SPD assisting in manageability.

It is unfortunate that these qualitative issues do not have readily accessible data as these are often the social issues which have a significant influence on people's lives. Although at present there are not indicators available to represent them they remain within the SA framework as they highlight questions which are fundamental in creating sustainable plans.

Table 4: Sustainability Appraisal Objectives (as adapted from the RSS Strategic Sustainability Assessment)

High Level objectives	Detailed Questions: does the policy/ proposal...	Explanation of the detailed question (where not obvious)	What appraisal will look for
1. Improve Health	1.1 Improve health <i>and wellbeing</i>	Access to sickness treatment services contributes, but health is more than this.	Development that contributes to positive wellbeing, through (e.g.) pleasant surroundings and living conditions, freedom from noise and pollution, and enabling lifestyles free from stress, anxiety and exhaustion.
	1.2 Reduce Health inequalities	Lower income (or other disadvantage) should not increase exposure to health risks or reduce access to a healthy lifestyle.	Development that avoids exposing poorer people to (e.g.) more pollution or noise, and that give all access to leisure and recreation.
	1.3 Promote healthy lifestyles, especially routine daily exercise	Sedentary lifestyles and lack of routine basic exercise are one of the main threats to health.	Patterns of development that make walking and cycling easy and attractive as routine methods of transport
	1.4 Allow for adequate provision of health services (in particular to address the high proportion of elderly residents)		<i>Allocations that accommodate premises which meet the needs of the health services. Increasing populations and high proportion of elderly, places pressure on the health service.</i>
2. Support communities that meet people's needs	2.1 Help make suitable housing available and affordable for everyone (to address a significant shortfall of affordable housing)		Match of housing to households; cost of appropriate housing relative to disposable incomes especially for less well off people; whether people are forced to move away from their chosen communities or workplaces to afford housing.
	2.2 Give everyone access to learning, training skills and knowledge	Important both to equip people for economic success and for personal development. The skills levels of the South West is lower than the national average, particularly in the western part of the region, which can hold people back from accessing satisfying work opportunities. The shortage of affordable housing in rural areas can affect supply of rural skill, for example in farming and food workforce, building and essential services	Quality and accessibility of schools, colleges, libraries. Encouragement for a diversity of choice of employment, particularly in the more deprived parts of the region, and educational and other service provision (e.g. Centres of Excellence for Skills) as part of regeneration efforts. Affordable housing for key workers.
	2.3 Reduce crime and fear of crime		Development that designs crime out, e.g. by providing passive surveillance, avoiding 'dead' spaces and times.
	2.4 Promote stronger and more vibrant communities	For example by fostering mutual trust, self help and reducing the amount of people needing to travel away from home to meet needs. Community involvement in local economies	Patterns of development that allow people to meet more needs within local communities and reduce the need to travel. Support for local trading schemes.
	2.5 Increase access to and participation in cultural activities		Cultural facilities integral with development. Development of 'environment-based' visitor attractions, that do not damage the resource they are based upon.
	2.7 Provide the required infrastructure and services in line with the rate of population increase		<i>Require assessment prior to development of adequacy of services and infrastructure to meet needs, with appropriately phased improvements to address shortfalls. Torbay's population increase will place additional pressure on existing services and will require the provision of some new services to help meet demand.</i>

High Level objectives	Detailed Questions: does the policy/ proposal...	Explanation of the detailed question (where not obvious)	What appraisal will look for
3. Develop the economy in ways that meet people's needs	3.1 <i>Promote diversification of the economy to provide a range of satisfying job opportunities.</i>	Work should provide satisfaction as well as income - consider whether jobs are ones people will WANT to do - rather than HAVE to do because there's nothing else. <i>There is a need to diversify Torbay's economy away from an over dependence on tourism in order improve economic stability and raise income levels.</i> Diversification of the economic base to reduce dependence on the tourism industry.	<i>Allocations that provide premises for a range of different employment needs</i> Availability of employment that people find attractive; whether people can make a sufficient income without having to do unattractive work; whether people who want to work outside the cash economy can do so. Promotion of more sustainable year-round tourism, particularly in coastal and market towns.
	3.2 Help everyone afford a comfortable standard of living	Can be improved by reducing cash costs – e.g. need to travel. High fares, high housing costs, or by fostering community self help to meet needs - as well as by increasing income.	Whether lower incomes are enough to buy a reasonable standard of living - taking account of (eg) housing and travel costs. Avoidance of kinds of economic development that (eg) raise housing costs or make people on lower incomes have to spend more on (eg) car travel or buying services commercially that used to be public or mutual.
	3.3 Reduce poverty and income inequality	Levelling up cash incomes helps; so does reducing the disadvantage caused by (e.g.) not being able to afford a car or pay for commercialised services.	Maintenance and enhancement of businesses meeting local needs. Encouragement for farmers' markets and farm shops.
	3.4 Meet local needs locally	Contributes to resilience and community strength as well as reducing the transport and energy intensity of the economy	Promotion of local and regional markets in goods and services. Development of greater integration within key economic sectors of the region. Encouragement to local businesses, especially micro and SMEs that adopt sustainable practices.
	3.5 Increase the circulation of wealth within the region	If businesses spend more of their income on goods and services within the region, this increases the benefits of business activities to the region and its economic security.	Integrated approaches to coastal management that provide for climate change to take its natural course where possible, careful planning of port and coastal town development, that delivers jobs that feed off but do not damage the environment, and by keeping the 'wild' stretches 'wild'.
	3.6 Harness the economic potential of the coast in a sustainable way	The coastline of the South West is one of the region's greatest, but most vulnerable, assets, particularly in the light of climate change.	Economic patterns that avoid unnecessary dependence on long distance trade and travel. Visitor and recreation developments that will encourage people to stay/visit the South West rather than go further afield.
	3.7 Reduce vulnerability of the economy to climate change and harness opportunities arising	Extreme weather, crop failures, water shortages at home or abroad may disrupt trade, long distance transport and availability of energy and other resources, and increase insurance liabilities. South West may become more attractive to visitors and business.	<i>Development which assists in regenerating and diversifying the tourism industry.</i>
	3.8 <i>Contribute to the regeneration and quality and diversity of the tourism industry</i>	<i>Tourism is an important component of Torbay's economy. In order to maintain it's share in the market it requires improvement and diversification.</i>	<i>Development patterns which assist in creation of year round employment with options for fulltime positions.</i>
	3.9 <i>Reduce reliance on seasonal and part time work within Torbay.</i>	<i>Torbay has a high level of part time and seasonal workers which results in low income levels and little security in income.</i>	
4. Provide access to meet peoples needs with least damage to communities and the environment	4.1 Reduce the need/ desire to travel by car	Road traffic is the only major terrestrial source of greenhouse emissions still increasing, the main source of local air pollution, and identified in countless surveys as one of the main threats to local quality of life through danger, noise, vibration and community severance. Car dependence deepens social exclusion and adds to pressures for unsustainable land use patterns.	Development patterns that reduce the need to travel, such as ensuring that people can live closer to their work. Avoid developments that generate further road traffic. Improvement of alternatives to the car. Promotion of 'non car' options for tourism. Policies that progressively reduce parking provision and road space. Policies that encourage more efficient use of car travel (e.g. car sharing, fuel efficient cars, etc.).

High Level objectives	Detailed Questions: does the policy/ proposal...	Explanation of the detailed question (where not obvious)	What appraisal will look for
	4.2 Reduce the need/ desire to travel by air	Air travel is more damaging in terms of climate change even than driving the same distance. Projected increases in air travel threaten to undo the UK's 'Kyoto' achievements. This has led organisations including the Royal Commission on Environmental Pollution and the Sustainable Development Commission to advocate demand management. Increasing air travel is unsustainable.	Develop alternatives, especially fast rail links and direct sea links to Eire, France and Spain. Any extra air capacity in the South West should be offset by reductions elsewhere eg Heathrow. Avoidance of development that encourages air travel. (Conflict with encouraging visitors from overseas and tourists).
	4.3 Help everyone access basic services easily, safely and affordably	Enabling people to get access to what they want in life with less travel is a 'win-win', reducing costs and effort as well as environmental damage.	Distance to, and ease of accessing, schools, shops, places of work and recreation. Quality of local services: having a school within walking distance of housing is less use if all families who can, send their children elsewhere. Encourage greater use of ICT.
	4.4 Make public transport , cycling and walking easier and more attractive		Provision of bus routes and stops, and safe, attractive and direct routes for cyclists and walkers. Patterns of development that support their use, eg short distances to local services, concentration of amenities in town centres served by radial bus routes. Improvement of urban, inter-urban and rural public transport services.
	4.5 Encourage a switch from transporting freight by road to rail or water		Encouragement of local goods and services. Provision of improved port and rail facilities, including inland waterways, and interchanges that will lead to reduced road freight traffic, not more.
5. Maintain and improve environmental quality and assets	5.1 Protect and enhance habitats and species (taking account of climate change)		Protection not only of designated areas, but of wildlife interest everywhere. Especially strengthening of links between 'wild' areas to increase adaptation to climate change
	5.2 Promote the conservation and wise use of land	Soils are a non-renewable resource. They should be conserved where possible and appropriate to do so for future generations. Much of the region's valuable cultural and natural resources are a product of a rural way of life and require rural skills and farming/stewardship to maintain them.	Avoiding development that leads to the permanent loss of bio-productive soils, taking into account their contribution to sustainable food production, biodiversity, flood storage, groundwater recharge, etc. Encourage development that strengthens links between urban and rural lives, and supports farmers' sustainable stewardship of rural land.
	5.3 Protect and enhance landscape and townscape	The diversity of the region is one of its major strengths, perhaps best expressed in its landscapes and townscapes, although much new build pays little respect to this (e.g. modern housing estates).	Location and design of development to respect and improve character and settlement setting.
	5.4 Value and protect diversity and local distinctiveness including rural ways of life	The South West's diversity, cultural as well as environmental, is a good in itself and increases resilience to external change.	Policies should avoid 'suburbanising' the countryside. Farmers and other land workers should be enabled to live in the countryside.
	5.5 Maintain and enhance cultural and historical assets		Protection of culturally and historically significant assets and qualities. Not just designated sites and buildings, but also non-designated such as locally valued features and landmarks
	5.6 Reduce vulnerability to flooding, sea level rise (taking account of climate change)	Existing settlements need to plan for increased risk.	New development and infrastructure should not be built in areas at risk. Relocation and managed retreat may be the best option.
	5.7 <i>Minimise habitat fragmentation and provide opportunities for new habitat creation or restoration</i>		
6. Minimise consumption of natural resources	6.1 Reduce non-renewable energy consumption and 'greenhouse' emissions	Renewable energy production and energy efficient technologies help. Best of all, look for ways to design out the need to use energy	Designing buildings to use natural lighting, ventilation and capture the sun's heat. Use of renewable energy where appropriate.

High Level objectives	Detailed Questions: does the policy/ proposal...	Explanation of the detailed question (where not obvious)	What appraisal will look for
	6.2 Keep water consumption within local carrying capacity limits (taking account of climate change)		Minimise water consumption, maximise use of rainwater / grey water.
	6.3 Minimise consumption and extraction of minerals		Greatest possible reuse of old material in new construction; provision for reuse and recycling.
	6.4 Reduce waste not put to any use	The best way - top of the waste hierarchy - is to avoid creating waste at source. Reuse, recycling, digestion and composting are better than disposal.	Provision for composting, digestion, recycling in new development.
	6.5 Minimise land, water, air, light, noise and genetic pollution		Development that minimises diffuse as well as point source pollution. Approaches to transport that will reduce traffic emissions.
	6.6 <i>Maintain and enhance the quality of Torbay's beaches and coastal waters</i>	<i>The quality of Torbay's beaches is fundamental in maintaining it's market share in tourism.</i>	<i>Development that does not damage but embraces the quality of Torbay's beaches and coastal water.</i>

Sustainability Appraisal Indicators:

Methodology for selection of SA Indicators: A number of indicators have been identified to form part of the overarching Sustainability Appraisal Framework for all the DPDs and SPDs within the Local Development Framework (see Table 5). They are grouped by High Level Objective and have been derived from local sustainability issues identified in the baseline, in order to measure the progress made towards reaching the sustainability objectives. Indicators have been selected on the basis that data is available at present and will continue to be available in future years.

Baseline data will comprise the most recent data available at the time of writing this report. Where comparators are available these are indicated in the table and may comprise comparisons with previous years in Torbay or comparison to other areas (e.g. the South West Region or England and Wales). Where targets exist these are indicated, as is frequency of data collection and source of data.

It should be noted that each of the DPD / SPD chapters in Part 2 may have a small number of additional indicators which relate to specific issues which that particular document addresses (i.e. topic or area specific).

Limitations:

Every effort has been made to provide indicators for each of the sub objectives. However, it should be recognised that not all aspects of each sub objective are easy to measure. For example the qualitative nature of 'lifestyles free from anxiety and exhaustion' is difficult to measure but still represents an important factor to consider during the assessment process. In this case measurement of sub-objectives may be skewed towards indicators which are collectable. Where indicators are not available for a particular sub-objective this has been noted in the table, as well as being listed as problematic in Section 9: Data Gaps.

It is anticipated that the suitability of the indicators and their related data outlined below will be determined as a result of the consultation on this Scoping Report.

Table 5: Sustainability Appraisal Indicators

High Level Objective	Issue	Indicators	Baseline level (date specified)	Comparator available?	Target available?	Frequency of data collection	Data source	Comments
1.1 Improve Health and Wellbeing	High proportion of elderly residents in Torbay compared to national averages	Percent of population over 65 years of age	23% (Census 2001)	National average is 16% (Census 2001)	No	Quarterly	Consultation and Research Team, Torbay Council	
	Life expectancy in Torbay is above the national average	Life expectancy a) Male b) Female	2001-2003: a) 76 b) 81	National: a) 76 b) 80	No	Rolling average published annually	Consultation and Research Team, Torbay Council	
	Torbay has the highest level of mental illness in Devon	A) Rate of suicide and undetermined injury B) Number of patients being treated for depression – AVAIL?	A) 2001-2002: 16.21 per 100,000 (an average 20 deaths a year) B)	Target for 2001/2002 was 10.74 per 100,000 for Torbay Target for 2001/2003 is 10.57 per 100,000 for Torbay compared to 8.37 for England	PCT target exists to reduce by 20% the mortality rate from suicide and undetermined by 2010	Rolling average published annually	Primary Care Trust (PCT)/ ONS	Data to be confirmed
	A high proportion of Torbay's population live in areas which are classified within the top 10% most living environment deprived	Number of SOA in the top 10% for Living Environment Deprivation	In 2004 19 SOAs in top 10% for Living Environment Deprivation	No – The ranked nature of this data provides a form of comparator against other SOAs in England	No	Approximately every 4 years	Consultation and Research Team, Torbay Council (ODPM)	
	Torbay is characterised by high density development (considered due to links to living environment)	Population density (Number of residents per hectare)	Mid year estimate for 2004 indicated a density of 21.1 persons per hectare	England and Wales – 3.5 Exeter 24.5	No	Mid year estimates available annually	Consultation and Research Team, Torbay Council	
1.2 Reduce Health inequalities	There is a significant variation in life expectancy between Torbay's wards	The difference in life expectancy between the ward with the highest and lowest life expectancy (in years)	1998-2002 difference = 6.87 years	No	No	Rolling average provided annually	Consultation and Research Team, Torbay Council	

High Level Objective	Issue	Indicators	Baseline level (date specified)	Comparator available?	Target available?	Frequency of data collection	Data source	Comments
1.3 Promote healthy lifestyles, especially routine daily exercise	Obesity is an increasing problem in Torbay	Number of patients classified as clinically obese (i.e. with a BMI of 30 or greater)	2004-2005 – 27% had a BMI of 30 or greater based on those 15-75 year olds visiting the GP over a 15 month period	No direct comparison. A health survey for England sampled 14,000 adults nationally finding a prevalence of obesity for men of 22% and women 23%*	No	Infrequent	Primary Care Trust	*this data is not directly comparable as the national survey is all adults and the local information is only adults up to 75 New requirements for national school survey on obesity to start from summer 2005 (to be included in the framework when available)
1.4: Allow for adequate provision of health services (in particular to address the high proportion of elderly residents)		Proportion of patients offered an appointment to see a Primary Care Professional within 1 working day	2004/2005 – Fully achieved – 100%??	No?	Same target for 2005/2006- what is this target?	Annually?	Primary Care Trust	Definition to be confirmed
2.1: Help make suitable housing available and affordable for everyone	Due to a combination of high house prices and low income levels Torbay has a significant problem with housing affordability	A) Torbay has an extremely high affordability ratio of house price to average earnings B) Ratio of lower quartile house prices to average earnings	A) 11 (3 rd quarter 2005) B) 8 (3 rd quarter 2005)	A) England and Wales – 7.9 (3 rd quarter 2005) B) England and Wales – 4.7 (3 rd quarter 2005)	A) No B) No	A & B) Annually	Strategic Planning Group, Torbay Council	In future years it is likely that this data will be collected in the second quarter for inclusion in the Housing Land Monitor.
	Torbay has a limited supply of social housing	Registered Social Landlord and Local Authority dwelling stock as a percentage of total dwelling stock	Torbay figure for 2004 is 8.3%	England 18.8% South West 13.6%	None identified	Annually	Consultation and Research Team, Torbay Council	

High Level Objective	Issue	Indicators	Baseline level (date specified)	Comparator available?	Target available?	Frequency of data collection	Data source	Comments
	There is an increasing number of people on the Local Authority register for social housing in Torbay	Number of households awaiting a housing association property	2003/04 – 2,555 households	2000/01 – 981 households	None identified	Annually	Consultation and Research Team, Torbay Council	
2.2 Give everyone access to learning, training, skills and knowledge	Torbay has a good level of GCSE/ GNVQ Achievements	Average GCSE/ GNVQ point score for all pupils	Torbay figures = 41.4% (2002/ 03)	Exeter = 37% (2002/2003) (lowest in Devon) Mid Devon = 44.5% (highest in Devon)	None identified	Annually	Consultation and Research Team, Torbay Council	
	The qualification level of Torbay's workforce is low	Percentage of population with NVQ level 4+	2001 census- Torbay 14%	England and Wales = 20% South West = 19%	None identified	Annually	Consultation and Research Team, Torbay Council	
2.3 Reduce Crime and Fear of Crime	Fear of crime is high in Torbay	Percentage of respondents considering crime to be a very or fairly big problem in Torbay	Viewpoint survey in 2004 indicated 75% of respondents considered crime to be a very or fairly big problem in Torbay.	None identified	No	It is anticipated that this data will be collected annually	Consultation and Research Team, Torbay Council	
	Crime rates are slightly above the England and Wales average in Torbay	Recorded offences per '000 residential population	Torbay 2004/2005 =108.4 recorded offences per '000 residential population	Torbay 2003/2004 =102.1 England & Wales 2004/2005 106.1	None identified	Annually	Consultation and Research Team, Torbay Council	
2.4 Promote stronger and more vibrant communities	No indicator available at present							
2.5 Increase access to and participation in cultural activities	Torbay has a lack of facilities for young people and children	Number of new young people's facilities provided	?	?	?	?	Cultural services	Data to be confirmed
	Some of Torbay's sporting infrastructure is in poor condition	Percentage of sporting infrastructure in poor/ very poor condition	30%					Data to be confirmed
	Amount of external funding secured for cultural activities?							Data to be confirmed

High Level Objective	Issue	Indicators	Baseline level (date specified)	Comparator available?	Target available?	Frequency of data collection	Data source	Comments
	Level of usage of Torbay's cultural activities: A) Libraries B) Museums	A) Number of physical visits per 1,000 population to public library premises (BV117) B) Number of visits/ usages of museums per 1,000 population	A) Torbay figure 2004/2005 is 4,628 B) Torbay figure for 2004/2005 is 501	A) Torbay figure 2003/2004 is 4,778 B) Torbay figure for 2003/2004 was 331	A) Target for 2004/5 was 5,000 B) Target for 2004/2005 was 400	A) Annually B) Annually	Both figures derived from BVPI	
2.6 Provide the required infrastructure and services in line with the rate of population increase	Torbay is experiencing a growth in population	Population of Torbay	2004 Mid Year Estimate- 132, 500	Torbay 2003 population = 131,300 (Mid year estimates)	No	Annually	Consultation and Research Team, Torbay Council	
3.1 Promote diversification of the economy to provide a range of satisfying job opportunities	Torbay suffers very low income levels	Mean annual gross pay for all employees in Torbay	2005 – Torbay figure was £17,110	England and Wales figure for 2005 = £23,916	No	Annually	Consultation and Research Team, Torbay Council	
	The proportion of employees working in the manufacturing sector is low compared to England and Wales averages	Proportion of employees in manufacturing	Torbay figure for 2003 is 8%	England and Wales comparator for 2003 is 12.8%	No	Annually	Consultation and Research Team, Torbay Council (Annual Business Inquiry)	
	Torbay requires diversification of it's economy to reduce reliance on tourism	Proportion of people in: A) Banking, finance and insurance B) Manufacturing C) Construction D) Other services E) Transport and Communications F) Energy and Water G) Agriculture and fishing	Data for Torbay 2003 outlines the following: A) 11.1% B) 8.0% C) 5.0% D) 4.7% E) 2.4% F) 0.4% G) 0.3%	England and Wales figures indicate: A) 20.0% B) 12.8% C) 4.4% D) 5.1% E) 6.1% F) 0.6% G) 0.8%	No	Annually	Consultation and Research Team (Annual Business Inquiry)	
3.2 Help everyone afford a comfortable standard of living	No indicators identified							

High Level Objective	Issue	Indicators	Baseline level (date specified)	Comparator available?	Target available?	Frequency of data collection	Data source	Comments
3.3 Reduce poverty and income inequality	A large proportion of Torbay's population live in areas which are employment deprived	Number of SOA in the top 10% for employment deprivation in England ⁴	2004 figures indicate 7 SOA in the top 10% for employment deprivation	No – The ranked nature of this data provides a form of comparator against other SOAs in England	No	Approximately every 4 years	Consultation and Research Team, Torbay Council (ODPM)	
	A number of areas in Torbay suffer from education deprivation	Number of SOAs in the top 10% for education deprivation in England ⁵	2004 figures indicate 3 SOAs in the top 10% for education deprivation	No – The ranked nature of this data provides a form of comparator against other SOAs in England	No	Approximately every 4 years	Consultation and research Team, Torbay Council	
	Recognised need to increase the number of people benefiting from life long learning.	Number of people enrolled in adult education classes in Torbay. Degrees / diplomas awarded by SDC / University of Exeter / University of Plymouth / Open University to mature students.	Number of people on adult learning courses available?					Data to be confirmed
3.4 Meet local needs locally	No indicators identified							
3.5 Increase the circulation of wealth within the region	Torbay has a good rate of business start ups	Net change in number of VAT registrations	Torbay figure for 2003 found a net gain of 75 units (400 registration and 325 de-registrations)	Figure for 2002 indicates a net loss of 40 units	No	Annually	Consultation and Research Team, Torbay Council (Small Business Service)	
3.6 Harness the economic potential of the coast in a sustainable way	Coastal erosion is evident along Torbay's coastline	Rate of coastal erosion	0.2m a year on undefended coastlines?	None identified	None identified	To be confirmed	DEFRA	South West Regional Coastal Monitor will start on April 2006. Data on erosion rates likely to be available from 2007

⁴ Covers unemployment claimant count, incapacity benefit, severe disablement allowance, New deal for 18-24, New Deal for 25+, New Deal for Lone parents over 18

⁵ Considers point score for key stage 2, 3, 4, proportion of young people not staying at school, secondary school absence rate, proportion of those under 21 not entering High Education

High Level Objective	Issue	Indicators	Baseline level (date specified)	Comparator available?	Target available?	Frequency of data collection	Data source	Comments
3.7 Reduce vulnerability of the economy to climate change and harness opportunities arising	Increased temperatures associated with climate change could extend the tourist season and increase the number of domestic holidays	Number of visitors received in Torbay each year	2003 figures indicate the number of visitors in Torbay at peak of season is 55,400	Number of visitors in peak of 2003 season is 56,050	No	Annual??	Consultation and Research Team, Torbay Council (Devon County Council)	
3.8 Contribute to the regeneration and quality and diversity of the tourism industry	A high proportion of Torbay's population are employed in the tourism industry	Proportion of employees in distribution, hotels and restaurants	Torbay figure for 2003 was 35.8%	England and Wales comparator for 2003 was 24.8%	No	Annually	Consultation and Research Team (Annual Business Inquiry)	
3.9 Reduce reliance on seasonal and part time work within Torbay	Torbay has a high number of people in part time work	Percentage of workers/ employees aged 16+ in part time employment	Torbay figure for June 2004 to May 2005 is 28.8%	England and Wales figure for June 2004 to May 2005 is 25.9% Torbay figure for 2003/2004 was 34.8%	No	Annually	Consultation and Research Team (Nomis Labour Force Survey)	
4.1 Reduce the need/ desire to travel by car	Car use is high in Torbay	A) Trips to work by car B) Trips to school by car	A) Torbay figure for 2004/2005 is 63% B) 43% of school children being driven to school	A) Torbay figure for 1999 was 63% B) In 2000 46% of children being driven to school	A) Target for 2010 is 60% B) No target identified	Annually	Strategic Transportation Team (Torbay Council) Local Transport Plan (2)	
	The proportion of residents in Torbay who do not have access to a car is in line with the national average	Proportion of residents who do not own a vehicle	Torbay figure for 2001 (census) is 26.79%	National percentage is 26.79 %	No	To be determined		Data entered is from the 2001 census. It is anticipated that data will be collected annually in future through a Viewpoint survey although this is yet to be confirmed
4.2 Reduce the need/ desire to travel by air	No data/ trends identified at a local level	Number of passengers travelling by air in the South West	2004 data indicated that 6.4 million passengers	1994 data indicated 1.9 million passengers	No	Annually	Regional Transport Statistics.	

High Level Objective	Issue	Indicators	Baseline level (date specified)	Comparator available?	Target available?	Frequency of data collection	Data source	Comments
4.3 Help everyone access basic services easily, safely and affordably	Torbay is experiencing a falling number of people killed or seriously injured in road accidents	Number of road accident casualties – All Killed/ seriously injured	2004/2005 figure is 26	No	Target for 2010 is 27	Annually	Strategic Transportation Team, Torbay council (BVPI/ LTP2)	
4.4 Make Public transport, cycling and walking easier and more attractive	Torbay is experiencing increase level of bus patronage	Public transport patronage (BVPI104)	Data for Torbay 2004/2005 indicates 6,498,046 journeys	Data for Torbay 2003/2004 indicates 6,430,466 journeys	Target for 2010/11 is 8,035,000	Annually	Strategic Transportation Team, Torbay council (BVPI/ LTP2)	
	Torbay has a small but increasing number of people cycling as a mode of transport	Cycle count at strategic locations across Torbay ⁶	2005/2006 total count is 746	2004/2005 data count is 679	(available in an indexed form not comparable to these figures)	Annually	Strategic Transportation Team, Torbay council (BVPI/ LTP2)	
4.5 Encourage a switch from transporting freight by road to rail or water	The majority of freight is transported in/ out of Torbay by road	Number of freight vehicles coming in/ out of Torbay per day	2005 figures outbound 855, inbound 853.	No	No	Annually	Strategic Transportation Team, Torbay council	Figures are based on the first week of May which is considered a neutral month (i.e. not heavily influenced by tourism). Includes Kerswell Gardens and Totnes Road which are the main transport links in and out of Torbay
5.1 Protect and enhance habitats and species	Torbay's SSSIs are in good condition	A)% area of SSSIs in favourable condition B) % area unfavourable recovering	Torbay figures (2004): A)92.66 B)6.83	South West Figures 2004: A) 73.42% B) 20.28	The Government's Public Service Agreement target is for 95% of SSSI land to be in 'favourable' or 'recovering' condition by 2010.	Unknown	English Nature Website (http://www.english-nature.org.uk/special/sssi/report.cfm?category=R,RF)	

⁶ Cycle counts are carried out at 5 locations across Torbay – Scotts Bridge, Yalberton Road, Windy Corner, Torquay Seafront, Hyde Road junction. Monitoring is carried out three times a day, in the morning and evening rush hours (to identify commuter traffic) and at lunchtime for recreational cyclists. Monitoring is carried out three times year in January, May and September

High Level Objective	Issue	Indicators	Baseline level (date specified)	Comparator available?	Target available?	Frequency of data collection	Data source	Comments
5.2 Promote conservation and wise use of land	Housing development patterns in Torbay are characterised by high densities	Average density of new developments (dwelling per hectare) in Torbay on A) Large sites B) Small sites C) Redevelopment sites	Baseline data for 2004/2005 in Torbay: A) 34 B) 97 C) 118	Data for 2003/2004 in Torbay: A) 22 B) 74 C) 113	PPG3 considers housing developments of less than 30 dwellings per hectare inefficient	Annually	Strategic Planning Group, Torbay Council (Housing Land Monitor)	
	Torbay has a high level of development on Brownfield sites	Proportion of new dwellings built on Brownfield land	Torbay figures for 2004/2005: 82% net gain	Torbay figures for 2003/2004: 78% net gain	PPG3 target of 60% new houses on Brownfield land	Annually	Strategic Planning Group (Housing Land Monitor) (BVPI 106)	
5.3 Protect and enhance landscape and townscape	No indicators identified							
5.4 Value and Protect diversity and local distinctiveness	Consideration of urban design in new development	Number of planning applications with an Urban Design Statement?	2005- 0 Urban Design Statements received with a planning application	No	No	Annually	Conservation and Design Team, Torbay Council	Although this doesn't necessarily indicate the quality of design it does indicate level of awareness of urban design issues.
5.5 Maintain and enhance cultural and historical assets	Number of listed buildings in Torbay considered to be 'At risk'	Check						Data to be confirmed
5.6 Reduce vulnerability to flooding, sea level rise	Torbay has a history of flash flooding	Number of properties flooded in a given year	2005 – 76 properties	2004- 44 properties	No	Annual	Highways and Drainage, Torbay Council	

High Level Objective	Issue	Indicators	Baseline level (date specified)	Comparator available?	Target available?	Frequency of data collection	Data source	Comments
		Number of planning applications approved contrary to Environment Agency advice	No data available at present	No	None identified	Annually	Planning and Development Services, Torbay Council	Data is likely to be available from 2006 due to requirements within the Annual Monitoring Report
5.7 Minimise habitat fragmentation and provide opportunities for new habitat creation or restoration	No data available at present. Development of BAP will address this. This could provide indicators on farmland bird species, status of BAP priority species and habitats and populations of coastal and sea birds.							
6.1 Reduce non-renewable energy consumption and 'greenhouse' emission	There are a limited number of renewable energy schemes operating in Torbay	Number of medium/ large renewable energy schemes operating in Torbay	2005- 0 schemes	No	No	Annually	Regen South West	Based on an annually survey carried out by Regen SW to identify new medium/ large scale schemes. The survey went out to developers/ installers/ Councils/ County Champions of renewable energy. Small schemes e.g. solar panels are not included as this data is difficult to obtain.
	The need to reduce energy consumption will become increasingly important in light to climate change	Average Consumption: A) Domestic B) Commercial and industrial	2003 figures for Torbay: A)4,565 B) 44,792	2003 Devon figures: A) 4,852 B) 50,189	No	To be confirmed	DEFRA	Data availability in the future not yet confirmed but is likely.

High Level Objective	Issue	Indicators	Baseline level (date specified)	Comparator available?	Target available?	Frequency of data collection	Data source	Comments
6.2 Keep water consumption within local carrying capacity limits	Data available for water availability at Roadford							Data to be confirmed
6.3 Minimise consumption and extraction of minerals	No quantified data available							
6.4 Reduce waste not put to any use	Torbay has a good history of recycling although increases in population and amount of waste produced per person is likely to make it difficult to meet recycling targets in the future	Torbay's household recycling/ composting rate	2004/2005 Torbay figure = 21.95%	2003/2004 Torbay recycling figure = 20.7%	National target for 2003/2004 = 20% 2005/2006 target = 30%	Annually	Strategic Environmental Policy, Torbay Council	Data relates to BVPI 82a and b and includes recycled and composted materials.
6.5 Minimise land, water, air, light, noise and genetic pollution	Air quality in Torbay is good with only one Air Quality Management Area designated	Number of Air Quality Management Areas Designated	2005 – 1 Air Quality Management Area Designated	No	Yes – 0 AQMAS	Annually	Environmental Health, Torbay Council	
6.6 Maintain and enhance the quality of Torbay's beaches and coastal waters	Marine bathing water quality is high in Torbay	Number of samples tested for the Bathing Water Directive within the following quality categories: A)Excellent B)Good C)Poor	2005: A) 11 B) 4 C) 0	2004: A) 8 B) 7 C) 0	None identified	Annually	Environment Agency website	

14. Proposed Structure of the final report

It is anticipated that the structure of the final Sustainability Appraisal will follow that of the guidance set out in 'Sustainability Appraisal of Regional Spatial Strategies and Local Development Document (ODPM November 2005)'. This structure is outlined below but may be subject to change as the appraisal process develops.

Components making up the Environmental Report	Table sign-posting the components of the SA Report which make up the Environmental Report for the purposes of the SEA Directive
1. Summary and Outcomes	<ul style="list-style-type: none"> 1.1 Non-technical summary 1.2 A statement of the likely significant effects of the plan 1.3 Statement on the difference the process has made to date 1.4 How to comment on the report
2. Appraisal Methodology	<ul style="list-style-type: none"> 2.1 Approach adopted to the SA 2.2 When the SA was carried out 2.3 Who carried out the SA 2.4 Who was consulted, when and how 2.5 Difficulties encountered in compiling information or carrying out the assessment
3. Background	<ul style="list-style-type: none"> 3.1 Purpose of the SA and the SA Report 3.2 Plan objectives and outline of contents 3.3 Compliance with the SEA Directive/Regulations
4. Sustainability objectives, baseline and context	<ul style="list-style-type: none"> 4.1 Links to other policies, plans and programmes and sustainability objectives and how they have been taken into account 4.2 Description of the social, environmental and economic baseline characteristics and the predicted future baseline 4.3 Main social, environmental and economic issues and problems identified 4.4 Limitations of the information, assumptions made etc 4.5 The SA framework, including objectives, targets and indicators
5. Plan issues and options	<ul style="list-style-type: none"> 5.1 Main strategic options considered and how they were identified 5.2 Comparison of the social, environmental and economic effects of the options 5.3 How social, environmental and economic issues were considered in choosing the preferred options 5.4 Other options considered, and why these were rejected 5.5 Any proposed mitigation measures
6. Plan policies	<ul style="list-style-type: none"> 6.1 Significant social, environmental and economic effects of the preferred policies 6.2 How social, environmental and economic problems were considered in developing the policies and proposals 6.3 Proposed mitigation measures 6.4 Uncertainties and risks
7. Implementation	<ul style="list-style-type: none"> 7.1 Links to other tiers of plans and programmes and the project level (Environmental Impact Assessment, design guidance, etc) 7.2 Proposals for monitoring

15. Next steps...

The next stage in the development of the LDF is to take on board the feedback from this consultation and update the Stage A work outlined in this scoping report accordingly. When the Issues and Options papers for specific DPDs/SPDs are prepared for consultation, information will be included in the document on the level of sustainability for each of the options under consideration. This is intended to inform the decision making process by raising any significant conflicts with sustainability.

Once an option has been chosen the draft LDD will be sent out for consultation alongside a full sustainability appraisal on the chosen option. This appraisal will reference the information in this scoping report alongside the results of the detailed appraisal of the draft proposals and outline of a monitoring programme. It will identify a full range of social, environmental or economic effects associated with plan implementation. The feedback from this consultation will be taken on board and where necessary changes made to the LDD. These changes will be appraised for their sustainability.

A full final Sustainability Appraisal will be submitted alongside the final LDDs with a statement to indicate how the sustainability appraisal process has influenced its development.

Glossary:

ACRONYM	FULL TITLE	DEFINITION
AONB	Area of Outstanding Natural Beauty	Areas designated by the Countryside Agency and confirmed by the Secretary of State for the Environment to conserve the natural beauty of the area.
AMR	Annual Monitoring Report	Part of the Local Development Framework. Will assess the implementation of the Local Development Scheme and the extent to which the policies in local development documents are being successfully implemented.
CWS	County Wildlife Sites	Represent the best examples of semi-natural habitats within the County and many are likely to support rare and local species and communities.
DPD	Development Plan Document	Part of the 'portfolio' of documents which make up the Local Development Framework. These form the development plan for the local authority and include core strategy, site specific allocations of land and area action plans. Other development plan documents, including generic development control policies, can be produced.
LDF	Local Development Framework	New system for planning, introduced by the Planning and Compulsory Purchase Act 2004, which replaces existing Local Plans currently prepared under the Town and Country Planning Act 1990 (as amended).
LDS	Local Development Scheme	To implement the new development plan system (the LDF), the Council must prepare and monitor a three year management plan, known as the Local Development Scheme (LDS).
LDD	Local Development Document	The LDF consists of a 'portfolio' of Local Development Documents which will provide and deliver the spatial planning strategy. LDDs are likely to be a mix of Development Plan Documents (DPDs) and Supplementary Planning Documents (SPDs), together with a Statement of Community Involvement (SCI) and Annual Monitoring Report (AMR).
LWS	Local Wildlife Sites	Sites identified by Torbay Council as being of wildlife importance but that do not meet the strict scientific criteria necessary for selection of CWSs but are still of great value for wildlife within the context of Torbay. These sites may particularly have important social, recreational, landscape or aesthetic value.
ODPM	Office of the Deputy Prime Minister	This is a Central Government department charged with the responsibility for planning and sustainable communities
PCT	Primary Care Trust	PCTs are part of the NHS responsible for the planning and securing of health services and improving the health of the local population. PCTs ensure the provision of health services including GPs, hospitals, dentists, mental health care, Walk-In Centres, NHS Direct, patient transport (including accident and emergency), population screening, pharmacies and opticians. In addition, they are responsible for integrating health and social care.
PPG	Planning Policy Guidance Note	Central Government publication under the old planning system outlining Government Policy on a particular planning topic.

PPP	Plans, Policies and Programmes	A review of plans, policies and programmes relevant to the plan being assessed comprises an essential element of the sustainability appraisal process
PPS	Planning Policy Statement	Previously known as Planning Policy Guidance Notes these are issued by the Office of the Deputy Prime Minister and set out the Government's land use planning policies for England under the new planning system. They must be taken into account in preparing the development plan. They are a material consideration in determining planning applications, and generally supersede development plan policies if they are more up to date.
RPG	Regional Planning Guidance	Guidance which sets out broad patterns of development at a regional level. RPG10 (2001) deals with the South West.
RSS	Regional Spatial Strategy	RSSs will replace RPGs and Structure Plans as a result of the introduction of the Planning and Compulsory Purchase Act 2004. RSSs will form part of statutory development plan system along with LDFs
S106	Section 106 Agreement	Legal agreement between the Council and a developer relating to planning obligations.
SA	Sustainability Appraisal	Assessment that considers social, environmental and economic effects of a plan
SAC	Special Areas of Conservation	Internationally important areas designated under the EC Directive on the Conservation of Natural Habitats and of Wild Flora and Fauna.
cSAC	Candidate Special Area of Conservation	A candidate area for the SAC (see above).
SEA	Strategic Environmental Assessment	Derived from the SEA Directive 2001/42/EC which took effect in July 2004. SEA involves the systematic identification and evaluation of the impacts of a strategic action (e.g. a plan or programme) on the environment. Applies to documents such as the Local Development Framework.
SOA	Super Output Area	This is the basis for the geographical comparison of statistical data across England. It roughly coincides with wards but allows a finer grain of analysis at the neighbourhood level.
SPD	Supplementary Planning Document	Part of the 'portfolio' of documents which make up the Local Development Framework (above) under the new planning system. They provide supplementary information in respect of the policies in the Development Plan Documents/ 'Saved' Torbay Local Plan
SSSI	Sites of Special Scientific Interest	Nationally important areas of land, designated under Section 28 of the Wildlife and Countryside Act 1981 by English Nature as being of a special interest by reasons of their flora, fauna, geological or physiogeographical features.
SuDS	Sustainable Urban Drainage Systems	Sustainable Urban Drainage Systems reduce and slow down the run-off of rainfall from impermeable surfaces - such as roads, pavements, car parks and roofs - in towns and cities. This is achieved through encouraging infiltration of rainfall into the ground close to where it falls, and by retaining runoff in ponds, on roofs and in gardens.

Sources: www.rtpi.org.uk, www.defra.gov.uk, www.odpm.gov.uk, Adopted Torbay Local Plan 1995-2011(2004)

List of Appendices:

Appendix A: Compliance with the Sea Directive

Appendix B: Review of Plans, Programmes and Policies

Appendix C: Torbay Baseline

These are available in hard copy from the Strategic Planning Team at Torbay Council (tel 01803 208857) or on the internet at www.torbay.gov.uk/ldf