

# Torbay Local Area Agreement 2008



# 1 Index

---

1	Index .....	1
2	Introduction – Torbay Mayor – Nick Bye .....	2
3	Key Partners Committed to Delivery .....	4
4	Story of place .....	5
5	What is a Local Area Agreement? .....	8
6	Developing Torbay’s LAA .....	9
7	Delivering Torbay’s LAA: .....	12
8	Priorities .....	14
8	Priorities .....	15
	National Indicators .....	19
	Statutory Children’s Indicators .....	57
9	Key Contacts .....	78
10	Sources .....	79



## 2 Introduction – Torbay Mayor – Nick Bye

---

Welcome to Torbay's new Local Area Agreement (LAA). Our LAA has been developed and prepared by the Torbay Strategic Partnership on behalf of all of the residents of Torbay.

The ambition for Torbay's LAA is to provide our partners with the flexibility and capacity to deliver the best solutions for our area. It is based on a stronger role for us to lead our communities, shape their areas and with other local service providers, innovate and respond to local needs.

The new LAA will run parallel with our Community Plan – "Turning the Tide". This is our 20 year ambition for Torbay and focuses on four key themes, these are:

Pride in the bay  
Learning and skills for the future  
Stronger communities  
The new economy

To help us to establish our priority indicators for the bay we ran a workshop session on the 14 January 2008. This event was attended by over 80 delegates including our key partners.

Some of our priority indicators include:

- Making sure that people from different backgrounds get on well with each other in our local area
- People being able to influence decisions in Torbay
- Improving services for Disabled Children
- Reducing the amount of children who get bullied in our schools
- Reducing the under 18 conception rate
- Reducing the amount of people claiming out of work benefits
- Providing more affordable homes
- Increasing the average earnings of employees in our area
- Tackling Fuel poverty

Torbay's LAA is the result of many months of work with our partner organisations and I would very much like to thank everyone involved for their hard work in producing this document and helping us establish our priority indicators for the Bay.

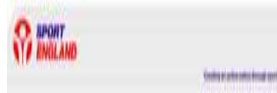
This document will enable us to deliver **key** services and tackle **real** issues that affect the whole community. As Mayor of Torbay and Chair of the Torbay Strategic partnership I will help deliver this agreement, which will improve the quality of life for all residents of the bay. I hope that you will join me in watching Torbay achieve its targets.

A handwritten signature in black ink that reads "N. D. Bye". The signature is written in a cursive style with a long horizontal stroke at the end.

Nick Bye (Chair of the Torbay Strategic Partnership and Mayor of Torbay)  
On behalf of the Torbay Strategic Partnership



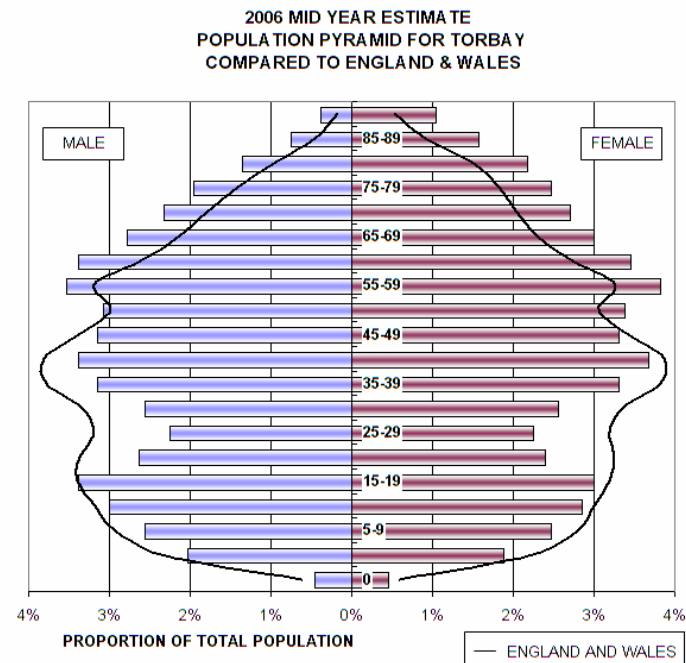
### 3 Key Partners Committed to Delivery



## 4 Story of place

### About Torbay

Torbay covers an area of just under 64 square kilometres and has approximately 45 kilometres of coast line with 20 public beaches. It is split into three towns, Torquay Paignton and Brixham, and is also known as “The English Riviera”. These towns are very different in character and we recognise that what might be appropriate for one town may not be appropriate for another, each of the towns has different opportunities and challenges that we need to address.



## Torbay's Priorities

### Sustainable Community Strategy

Torbay is clear about its priorities - "Turning the tide" Torbay's community plan was launched in June 2007 and has drawn on the views of our residents as well as representatives from the business, community and voluntary sectors.

Our 20 year ambition for Torbay is to be:

a prosperous area known to be a great place to live and learn and grow up in

an area where we compete on a world stage in our traditional industries of tourism and fishing

an area where communities know and support each other and enjoy some of the best services in England

an area that widens opportunities and provides high quality employment and retains our young people in the Bay

an area that celebrates the differences in the three towns, builds on the strengths of these towns and brings back the feel-good factor:

- Glamorous café culture of Torquay
- Fantastic family friendly Paignton
- Romantic atmosphere in the working port of Brixham

The plan focuses on economic prosperity as the top priority for delivery of the vision and as a means of community prosperity.

The vision is broken down into four key themes these are:

- Pride in the bay
- Stronger communities
- Learning and skills for the future
- The new economy



### Local Area Agreement 2007

Torbay completed its first LAA in March 2007. This agreement reflected Torbay's priorities and included 11 challenging stretch targets. The experience gained from the negotiation and delivery during 2007/8 leaves Torbay well placed to negotiate an ambitious LAA with challenging targets that will address Torbay's priorities.

### Research & Intelligence

Torbay Council and its partners have developed a strong evidence base summarised in a Key Statistics document, this document has been used by Key Partners to assist in the development of priorities. In addition to this information, key statistics are available at Ward level. This will be used to target delivery to areas of greatest need. Joint working across agencies to develop Torbay's evidence base including a Joint Strategic Needs Assessment for Health has also formed a vital part of Torbay's evidence base.



## 5 What is a Local Area Agreement?

---

### Overview

A Local Area Agreement (LAA) is a three-year agreement between a local area and central government. The LAA describes how local priorities will be met by delivering local solutions. It also contributes to national priorities set out by the Government.

The LAA is negotiated between the local strategic partnership (LSP) and the regional Government Office (GO). The LSP consists of all the key players in a local area who deliver services. The local authority is the lead partner in the LSP. The local authority is the responsible authority for the development of the LAA, on behalf of the LSP. It is also the accountable body for the Area Based Grant. Other key players in a LSP include the police and the primary care trust.

The LAA allows services to be delivered in a more joined-up way by bringing together partners from the public, private and voluntary sectors. The LAA pools certain streams of funding into a single pot. This avoids duplicating effort and wasting money.

### Why is Torbay negotiating a new LAA after one year?

The Local Government White Paper 'Strong and Prosperous Communities' published in October 2006 sets out fundamentally different arrangements for LAAs. The ambition is for LAAs to provide local authorities and partners with the flexibility and capacity to deliver the best solutions for their areas through a reformed relationship between central and local government.

New LAAs will no longer be an add-on to the multiple national performance frameworks under which local authorities operate – they are replacing them. The new arrangements are based on a stronger role for local authorities to lead their communities, shape their areas and with other local service providers to innovate and respond to local needs.

The Local Government and Public Involvement in Health Act 2007 (LGPIH Act 2007) sets out a list of over 20 agencies and organisations that are termed “named partners” and that are under a duty to co-operate towards the overall development of the LAA. Those partners that sign up to a specific target will also be covered by the duty to have regard in relation to that particular target



## 6 Developing Torbay's LAA

---

### Process

In October/November 2007 the LAA Project Board and LAA theme groups established to develop the first LAA and commenced development of a draft long list.

Torbay's Key Stats document was updated during December 2007 and early January 2008

A workshop event was held on 14 January 2008 which was attended by over 80 key local and regional partners, they honed our "long list" of indicators down to 35.

Torbay Strategic Partnership (TSP) agreed the list of indicators for Torbay's LAA for submission to Government Office at its meeting on the 31 January 2008.

Negotiations between Government Office representatives and Torbay's theme leads continued during February and March.

TSP agreed at its meeting on 27 March a list of 32 negotiated indicators for Torbay's LAA, with an additional indicator NI123 16+ current smoking rate prevalence to be included from 2009/10 onwards or when national data to support this indicator is made available. They also wished to add an additional indicator NI11 Engagement in the Arts

Torbay Council Scrutiny considered the LAA on 2 April 2008 – They wished to be involved in the delivery and the continuing development of the LAA in the period leading up to and following the six month self assessment.

The LAA Project board met on April 8 2008 to review progress and made the following recommendations:

Inclusion of NI 11 "Engagement in the Arts". The inclusion of this indicator was considered to be important as it will help to raise the profile of the Bay; it would set an aspirational tone and also would link in with the delivery of economic prosperity. There was strong support from the Arts Council for inclusion of this indicator.



Inclusion of NI 54: Services for disabled children - This indicator only just missed the cut off for inclusion in the January workshop event, delivery on this indicator is a top priority within the Children's Trust.

Deletion of NI 195 "Improved street and environmental cleanliness (levels of graffiti, litter, detritus and fly posting)" - Current performance against this indicator is already in the top quartile compared with other authorities leaving little scope for improvement.

Torbay Council cabinet agreed the Local Area Agreement on 15 April taking into account the views of the Scrutiny Board

Torbay Council agreed the LAA at their Full Council Meeting on 17 April

### **Involvement of 3rd Sector:**

The third sector has been involved in the development of this LAA in a number of ways:

- Representation of the Change-up consortium on the Torbay Strategic Partnership Board
- Through the Changeup Consortiums' role as delivery board for the stronger element of the LAA
- Involvement in the January workshop event
- Input into the work of some LAA theme groups

### **Equality & Diversity:**

Torbay's LAA directly addresses equality and diversity through 8 LAA indicators:

- Making sure that people from different backgrounds get on well with each other in our local area
- People being able to influence decisions in Torbay Council
- Improving services for disabled children
- Reducing bullying in schools
- Reducing the under 18 conception rate
- Reducing number of people claiming out of work benefits



Providing more affordable homes  
Increasing the average earnings  
Tackling fuel poverty

An equalities impact assessment has been undertaken with four recommendations for future action identified:

Identify LAA indicators that can be monitored against equalities strands and ensures performance is reported at the six monthly review  
Include additional equalities questions in place survey (to be reviewed on confirmation of final place survey questions)  
Ensure consultation with equality and diversity reference groups to raise awareness of LAA and assess impact of LAA  
To publish the equality and diversity impact assessment and equalities monitoring on our website

## 7 Delivering Torbay's LAA

---

### Performance Management

The performance management arrangements will follow the national framework for LAA's with:

Six monthly performance management meetings with Government Office covering:

- Progress against all indicators and the financial position
- Clarifying the reason for any missing data and agreeing when it will be available
- Agreeing the refresh of the LAA (at one of the meetings each year).

Partners have agreed to use the Council's performance management system, SPAR.Net which has been developed to allow other partners to update their performance data and run reports through a secure log on to the Council's internet site. With access, this will enable the lead partner for each indicator to take responsibility for data input as well as providing access and transparency to the whole LAA. GOSW will also be provided with read only access.

Performance reports will be presented quarterly to the TSP on an exception basis. The TSP will hold the LAA delivery board to account for delivery of the LAA. In cases of under performance the LAA delivery board responsible will identify the necessary measures to be taken to bring it back on track or identify an alternative approach, e.g. to review their action plan.

Action plans will be developed for each indicator by the Lead Partner for agreement. Each plan will identify what actions will be undertaken to achieve the target, by when, and who will carry out each action. These milestones will be the measures by which the LAA is performance managed.

Each Action Plan will include an equalities impact assessment as part of its development.

Equalities will be further embedded within the performance management framework of the LAA through: -



- Regular monitoring of sub indicators relating to ethnic origin, disability, age and gender where available;
- A programme of Equality Impact Assessments at key points within the life span of the LAA.

## Governance

Revised governance arrangements were agreed by the TSP in 2007 to reflect the new priorities and the negotiation of the 2007 LAA. These arrangements will continue with the new agreement

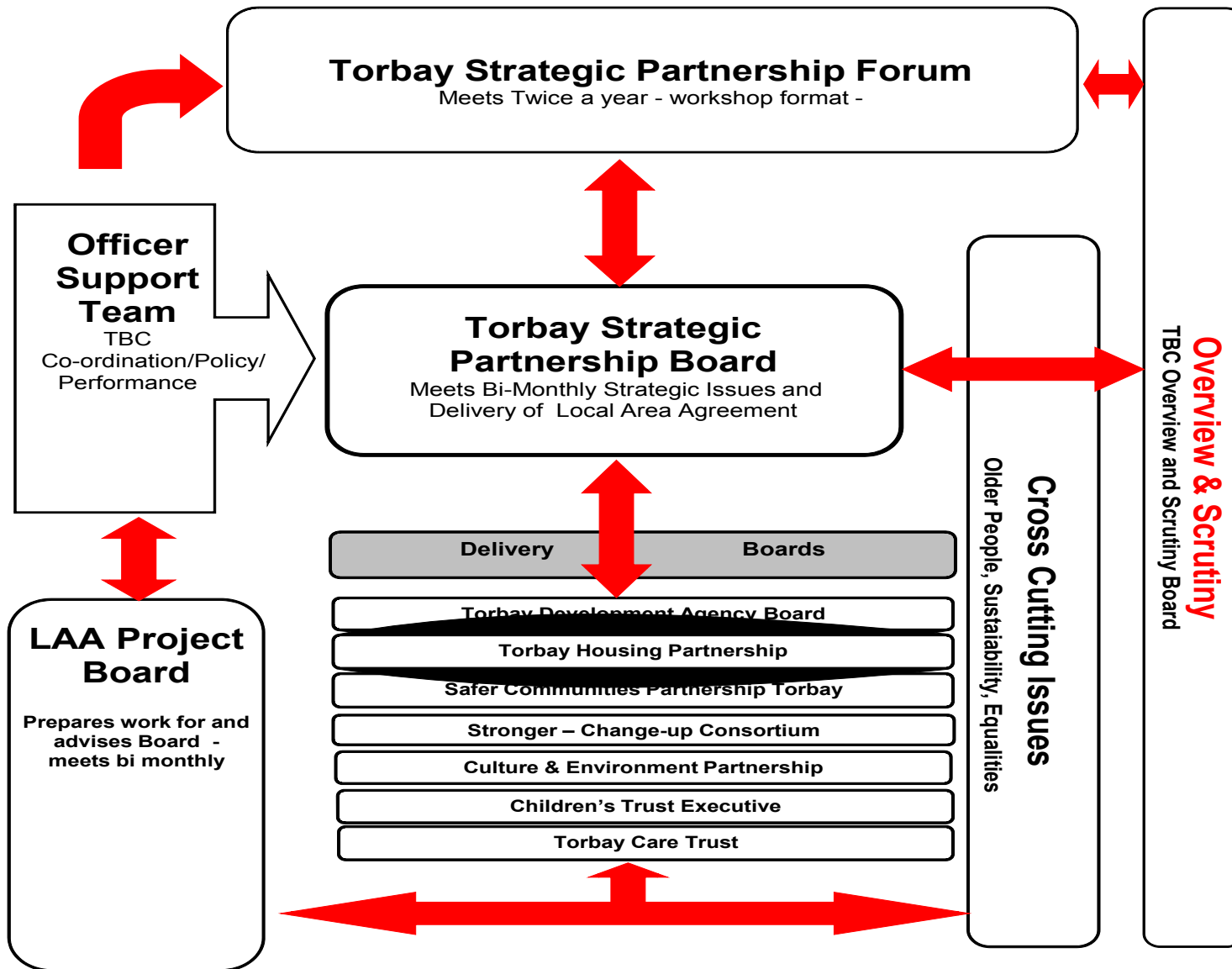
Key features of the structure are:

An inclusive **Partnership Forum** that will meet twice a year to generate ideas for the future direction of Torbay for consideration by the TSP Board

A **Partnership Board** that will meet bi-monthly to monitor and agree the continuing development of the Community Plan and LAA, taking into account the views of the TSP Forum and Torbay Council's Overview and Scrutiny Board

The **Project Board** will prepare work for, and advise the Partnership Board and provide a link between Delivery Boards and the TSP

Delivery of the Plan will be the duty of **Delivery Boards** who will be responsible for: Delivery of the LAA and Community Plan and to agree timetables and budget



## 8 Priorities

### **The New Economy**

Torbay's economy continues to face significant pressures, while unemployment is low it remains the highest in the Region and Torbay's share of unemployment across the region has grown from 3.93% in 2000 to 4.9% in 2008.

The level of wealth as measured by Gross Value Added is one of the lowest in the country and growing half as fast as the regional average.

The economy indicators that have been selected for inclusion in the Local Area Agreement reflect these immediate priorities of the Council and its partners in regenerating Torbay's economy. The statistics and our local knowledge means it is essential that a programme of work to raise skills, raise earnings and reduce benefit dependence particularly in our most deprived areas is undertaken to complement recent successful projects such as the Torbay Innovation Centers and the Mayoral Vision launched in early 2008. In delivering Torbay's LAA we will ensure that any (business support) activities to deliver the economic targets will be in compliance with the principles of the Business Support Simplification Programme

In addition to the main indicators that we will deliver against it will remain important for the economy and in particular sustaining and growing business that Torbay continues to ensure that the planning system enables a supply of appropriate land, supports necessary changes in transport infrastructure and vitally that we continue to ensure access to high quality business support services.



### **Stronger and Safer communities**

The first joint Strategic Needs Assessment for Torbay was completed in September 2007 and attempted to address the following questions:

- Which groups need our help and where do they live
- How many children are living in poverty
- What are people dying of
- Which of our communities dies youngest and when
- How many people do we have over the age of 75
- What illnesses are people living with

Whilst we continue to see a downward trend in 'all age all cause mortality' there remain variations across Torbay and the in-equalities gap is not narrowing. There is a difference in the life expectancy between the most deprived and the least deprived wards of 8 and 6 years respectively for males and females.

The proportion of people aged over 75 in Torbay currently equates to 11.5% of the population, whereas in England overall it is 7.8%. There are variations between wards, with 6.6% of residents in Blatchcombe over 75 years of age, whereas in Wellswood the proportion is nearly 3 fold at 18.2%.

Torbay has pockets of severe multiple deprivation with 10 Super Output Areas (each with a mean population of 1,500 people) now ranked in the top 10% most deprived in England (2007). There were high levels of poverty (or income deprivation) affecting children between 0-19 years of age and again variations across Torbay. Three wards have in excess of 40% of children in poverty with Tormohun being the worst at 75.7%, (2004). The England average is 28.3%. There are clear links between deprivation and poor health and well-being.

As well as Torbay's demographic and economic challenges, challenges exist around risk taking behaviours and these can be outlined as follows:

27% of adults continue to smoke and there is a rising proportion of teenage girls smoking, giving Torbay the highest prevalence rate in the whole of the South West.

Nearly 1 in 5 adults in Torbay are obese.

Alcohol liver disease admissions are twice the expected rates across Torbay as a whole and five times the expected rates in one ward

Torbay has over a 1000 problematic drug users.

Torbay's teenage conception rates continue to rise with all the consequent negative affects on health outcomes for both the young mother and the child. Teenage mums have lower breast-feeding rates and higher prevalence rates for smoking and a higher proportion of babies born to teenage mums are of low birth weight.

Torbay has high mental health admission rates and a high suicide rate, although the numbers are small approximately 15-20 deaths per annum.

The Local Area Agreements that have been agreed will help to tackle these key public health problems and aim over the next 3 years to improve health and well-being overall and narrow the in-equalities gap that exists.

Safer Communities Torbay produced a strategic assessment in December 2007 which the main aim was to understand the crime and disorder problems experienced by Torbay and identifying the priority issues for the Community Safety Strategy. From completing this process the Safer Communities Joint Commissioning Executive were able to agree the following areas as priorities for the partnership for the next three years.

- Anti social behavior (ASB)
- Community engagement
- Alcohol
- Drugs
- Domestic abuse
- Road traffic accidents
- Young people
- Reduce re-offending of both young people and adults.

The Local Area Agreement targets were chosen from this list of priorities that would have the greatest impact on reducing crime and disorder issues in the bay.

## **Children and young people**

The challenges facing families and children in the Bay are mixed, amongst areas of relative affluence there are pockets of deprivation. The Council and its partner agencies have made good progress recently on a number of key issues from the delivery of secure safeguarding arrangements to improving the levels of GCSE attainment but we recognise there is more to do.

The Council and its partners remain committed to improve the outcomes for all children across the 5 every child matters areas; be healthy, stay safe, enjoy and achieve, positive contribution and economic well being. We understand that improving the outcomes for all children and families underpins our overall aim to improve the bay's economic prosperity.

The indicators chosen for inclusion in the children's theme reflect our understanding of the key priorities for children and young people in the bay. The selection of these issues was a collaborative effort that included children and young people and key partner agencies. The indicators and the targets represent our shared aspirations and plans to improve the outcomes for young people in the bay in the following areas:

Improving emotional and mental well being (Child and Adolescent Mental Health Services)  
Reducing Teenage Conceptions

Raising Key Stage 2 Attainment  
Enhancing learning and employment prospects for 14 -19 year olds  
Reducing school absences and incidences of bullying  
Things to do, safe places to play  
Improving opportunities and life chances for Children with Disabilities  
Safeguarding the most vulnerable children and young people in the Bay.

We will carefully consider our progress and will reflect yearly on the choices we have made and make amendments to reflect any significant developments. As part of this review process we will have to return to the targets set on the attainment figures especially those for 2010/11 as we know that predictions this far ahead are liable to be inaccurate.

### **Pride in the bay**

The Community Plan for Torbay already identifies a number of key priorities and targets that are closely linked to specific indicators within this LAA. For example, we are working hard to ensure that people have access to means of transport other than the private car and building on public transport provision will be key in this regard. Additionally, the Community Plan identifies more efficient and sustainable energy use as particularly important and we are working with our partners to try and deliver improvements in this area. In terms of the waste agenda, the Community Plan is clear that we need to improve our recycling rates and reduce the amount of waste that is taken to landfill. This LAA now identifies some specific targets in these areas that will provide additional focus for our activities and those of our partners

**PLEASE NOTE: if cells are grey these are our Proxy Designated Indicators.**

**National Indicators (34)**

NI	NI Description	Baseline 2007/8	LAA Improvement Target			Responsible Officer	Theme Lead	*Lead partner/s + Signed-up Partners	Com Plan	Priority	Notes
			2008/9	2009/10	2010/11						
1	<p><b><u>% of people who believe people from different backgrounds get on well together in their local area</u></b></p> <p><i>Collection is proposed through the new Place Survey.</i></p> <p><i>Collection interval: Biennial</i></p>	<p>Estimate 76% (Current LAA 06/07) GUSS without 'Don't know/Too few people in local area' and All the same background' responses excluded</p>	n/a	TBC**	TBC**	Tracey Cabache	Caroline Taylor	*Torbay Council +Change-up Consortium	Stronger	Stronger Communities	<p><i>**A statistically significant improvement on the 2008 Place Survey Baseline (with option to review in 2009)</i></p> <p>See below for Proxy Designated Indicator</p>

NI	NI Description	Baseline 2007/8	LAA Improvement Target			Responsible Officer	Theme Lead	*Lead partner/s + Signed-up Partners	Com Plan	Priority	Notes
			2008/9	2009/10	2010/11						
Proxy (1)	Proxy Designated Indicator:  Audit of existing community cohesion activities and development of a partnership strategy	N/A	Complete audit and agree partnershi p strategy	TBC	TBC	Tracey Cabache	Caroline Taylor	*Torbay Council +Change Up Consort	Stronger	Stronger Communities	

NI	NI Description	Baseline 2007/8	LAA Improvement Target			Responsible Officer	Theme Lead	*Lead partner/s + Signed-up Partners	Com Plan	Priority	Notes
			2008/9	2009/10	2010/11						
4	<p><b><u>% of people who feel they can influence decisions in their locality</u></b></p> <p><i>Collection is proposed through the new Place Survey</i></p> <p><i>Collection interval: Biennial</i></p>	<p>Estimate 25% (GUSS 2006/7 weighted version)</p>	26%	27%	29%	Tracey Cabache	Caroline Taylor	*Torbay Council +Change-up Consortium	Stronger	Stronger Communities	<p><i>GOSW require a statistically significant increase in the percentage of people who feel able to influence decisions in their local area between the first Place Survey (reporting early 2009) and the second Place Survey (reporting early 2011)”</i></p> <p><i>Current target is based on GUSS 2006/07 but this will be reviewed after the results of the first Place Survey</i></p>



NI	NI Description	Baseline 2007/8	LAA Improvement Target			Responsible Officer	Theme Lead	*Lead partner/s + Signed-up Partners	Com Plan	Priority	Notes
			2008/9	2009/10	2010/11						
7	<p><b><u>Environment for a thriving third sector</u></b></p> <p><i>This indicator will measure the contribution that local government and its partners make to the environment in which independent third sector organisations can operate successfully.</i></p> <p><i>Collection interval: Baseline measurement during Autumn 2008 and a follow-up in Autumn 2010.</i></p> <p><i>There will be headline local reports on the baseline in January 2009, and local data available in Feb-March 2009.</i></p>	n/a	n/a	TBC**	TBC**	Tracey Cabache	Caroline Taylor	*Torbay Council +Change-up Consortium	Stronger	Stronger Communities	<p>**GOSW require a statistically significant improvement between the first and second waves of the national survey of third sector organisations, calculated in accordance with OTS guidance</p> <p>See below for Proxy Designated Indicators</p>
Proxy (7)	<p>Proxy Designated Indicator:</p> <p>Total income from local agencies. Some LAs have that information, some haven't.</p>	£2.916 million (Torbay Council Only)	Establish baseline information across all agencies	TBC	TBC	Tracey Cabache	Caroline Taylor		Stronger	Stronger Communities	



NI	NI Description	Baseline 2007/8	LAA Improvement Target			Responsible Officer	Theme Lead	*Lead partner/s + Signed-up Partners	Com Plan	Priority	Notes
			2008/9	2009/10	2010/11						
Proxy (7)	<p>Proxy Designated Indicator:</p> <p>Involvement of representative third sector organisations on the LSP, and other partnership boards, at points of decision making;</p>	(2007 LAA S8.3) 55%	100%	N/A	N/A	Tracey Cabache	Caroline Taylor		Stronger	Stronger Communities	<p>Current LAA S8.3 Percentage of key partnerships with voluntary sector representation (and identified in terms of reference)</p> <p>Information will be available on the 20<sup>th</sup> May</p>
Proxy (7)	<p>Proxy Designated Indicator:</p> <p>Evidence of a long term strategy on third sector involvement;</p>	None	In draft form	In operation	In operation	Tracey Cabache	Caroline Taylor		Stronger	Communities Stronger	Target to have a strategy in place and will be in operation in 2009/10

NI	NI Description	Baseline 2007/8	LAA Improvement Target			Responsible Officer	Theme Lead	*Lead partner/s + Signed-up Partners	Com Plan	Priority	Notes
			2008/9	2009/10	2010/11						
Proxy (7)	Proxy Designated Indicator:  Compact compliance, with the Compact embedded in ways of working	TSP signed up to Compact	Need to establish a means of collecting baseline	TBC	TBC	Tracey Cabache	Caroline Taylor		Stronger	Stronger Communities	

NI	NI Description	Baseline 2007/8	LAA Improvement Target			Responsible Officer	Theme Lead	*Lead partner/s + Signed-up Partners	Com Plan	Priority	Notes
			2008/9	2009/10	2010/11						
8	<p><b><u>Adult participation in sport</u></b></p> <p><i>The percentage of the adult population in a local area who participated in sport and active recreation, at moderate intensity, for at least 30 minutes on at least 12 days out of the last 4 weeks (equivalent to 30 minutes on 3 or more days a week).</i></p> <p><i>Collection example: data for reporting year April 2008 to March 2009 will be reported in November 2009, based on Active People data collected between October 2007 and October 2009. Figures will be published with associated confidence intervals.</i></p>	20.70%	22.70%	23.70%	24.70%	Sue Cheriton	Mark Richards	*Torbay Council (Cultural services)  Cultural and Environment Partnership	Stronger	Stronger Communities	To be reviewed as part of the LAA refresh

NI	NI Description	Baseline 2007/8	LAA Improvement Target			Responsible Officer	Theme Lead	*Lead partner/s + Signed-up Partners	Com Plan	Priority	Notes
			2008/9	2009/10	2010/11						
11		30,851 (Local Proxy Indicator)	32,000 (Local Proxy Indicator)	TBC	TBC	Mischa Eligloff	Sue Cheriton	*Cultural and Environment Partnership	Stronger	Stronger Communities	Local Proxy Indicator NI 11 will have a base line set later this year Please note that in the meantime we are using a Local Proxy Indicator (Participation in Cultural Activity - Palace Theatre complex) Agreed with DCMS (national) and GOSW 'will proved a statistically significant improvement across the period to the LAA'



NI	NI Description	Baseline 2007/8	LAA Improvement Target			Responsible Officer	Theme Lead	*Lead partner/s + Signed-up Partners	Com Plan	Priority	Notes
			2008/9	2009/10	2010/11						
18	<p><b><u>Adult re-offending rates for those under probation supervision</u></b></p> <p><b><u>Full title: Rate of proven re-offending by adults under Probation supervision.</u></b></p> <p><i>The proportion of adult offenders (aged 18 and over) on the Probation caseload who are proven to have re-offended within 3 months from the month the snapshot was taken, compared with the predicted proportion of proven re-offenders for that Probation Area and Local Authority,</i></p>	N/A (2007 LAA S1.2C & S1.2D)	N/A	TBC	TBC	Ruth Roberts	Kirsty Mooney	*Safer Communities Torbay			<p><b>Proxy Designated Target</b></p> <p><b>Target to be Set When Home Office have Established Criteria – For 08/09 use Proxy Indicators as below.</b></p>

NI	NI Description	Baseline 2007/8	LAA Improvement Target			Responsible Officer	Theme Lead	*Lead partner/s + Signed-up Partners	Com Plan	Priority	Notes
			2008/9	2009/10	2010/11						
Proxy (18)	Proxy Designated Indicator Increase the number of offenders referred to the Skills for Life programme	148 (2006/07)	170	N/A	N/A	Kirsty Mooney	Kirsty Mooney	*Safer Communities Torbay			Used as one of two proxies for NI18 for 2008/09 as local authority based data not available
Proxy (18)	Proxy Designated Indicator Increase the number of offenders who complete the Skills for Life programme	21 (2006/07)	30	N/A	N/A	Kirsty Mooney	Kirsty Mooney	*Safer Communities Torbay			Used as one of two proxies for NI18 for 2008/09 as local authority based data not available

NI	NI Description	Baseline 2007/8	LAA Improvement Target			Responsible Officer	Theme Lead	*Lead partner/s + Signed-up Partners	Com Plan	Priority	Notes
			2008/9	2009/10	2010/11						
30	<p><b><u>Prolific and other Priority Offender re-offending rate</u></b></p> <p><i>The Change in convictions for prolific and other priority offenders (PPOs) over a 12 month period.</i></p>	To be confirmed at the end of June 08	12% reduction in convictions from baseline year	TBC	TBC	Ruth Roberts	Kirsty Mooney	*Safer Communities Torbay	Stronger	Safer Communities	



NI	NI Description	Baseline 2007/8	LAA Improvement Target			Responsible Officer	Theme Lead	*Lead partner/s + Signed-up Partners	Com Plan	Priority	Notes
			2008/9	2009/10	2010/11						
39	<p><b><u>Alcohol-harm related hospital admission rates</u></b></p> <p><i>This indicator measures the year-on-year percentage change in the rate of alcohol related admissions per 100,000 population using Hospital Episode Statistics.</i></p> <p><b>Collection interval:</b> Quarterly Q1 = April – June Q2 = July – September Q3 = October – December Q4 = January – March</p>	1613	2266	2651	3075	Jonathan Brook	Kirsty Mooney	*Safer Communities Torbay	Stronger	Safer Communities	VITAL SIGNS VSC26

NI	NI Description	Baseline 2007/8	LAA Improvement Target			Responsible Officer	Theme Lead	*Lead partner/s + Signed-up Partners	Com Plan	Priority	Notes
			2008/9	2009/10	2010/11						
40	<p><b><u>Drug users in effective treatment</u></b></p> <p><i>This indicator shows the change in the total number of drug users, using crack and/or opiates recorded as being in effective treatment, when compared with the number of drug users using crack and/or opiates recorded as being in effective treatment in the baseline year of 2007/8. Effective treatment is defined as:</i></p> <ul style="list-style-type: none"> <li>• Discharged from the treatment system 12 weeks or more after triage,</li> <li>• Or that remain in treatment 12 weeks after triage,</li> <li>• Or that were discharged in less than 12 weeks in a care planned way.</li> </ul> <p><b>Collection interval:</b> Annual Financial Year</p>	464	483	493	498	Jonathan Brook	Kirsty Mooney	*Safer Communities Torbay	Stronger	Safer Communities	VITAL SIGNS VSB14

NI	NI Description	Baseline 2007/8	LAA Improvement Target			Responsible Officer	Theme Lead	*Lead partner/s + Signed-up Partners	Com Plan	Priority	Notes
			2008/9	2009/10	2010/11						
51	<p><b><u>Effectiveness of child and adolescent mental health (CAMHs) services</u></b></p> <p><i>A self assessment of how effectively mental health services meet children's mental health needs for 2008/09.</i></p> <p><b>Collection interval: Annual</b></p>	13 (2006/07)	15	16	16	Siobhan Grady	Russell Knight	*Torbay Care Trust +Torbay Council	Learning	Children and young people – Be Healthy	

NI	NI Description	Baseline 2007/8	LAA Improvement Target			Responsible Officer	Theme Lead	*Lead partner/s + Signed-up Partners	Com Plan	Priority	Notes
			2008/9	2009/10	2010/11						
53	<p><b><u>Prevalence of breastfeeding at 6 – 8 weeks from birth</u></b></p> <p><i>This is a new data collection. Four data lines will be collected</i></p> <p><b>Collection interval: Quarterly</b>                      Quarter 1 = 1 April to 30 June                      Quarter 2 = 1 July to 30 September                      Quarter 3 = 1 October to 30 December                      Quarter 4 = 1 January to 31 March</p>	N/A (2007 NI H1.4 see below)	TBC	TBC	TBC	Debbie Stark	Mark Richards	*Torbay Care Trust	Stronger	Children and young people – Be Healthy	<p>Local Proxy Target</p> <p><b>NI DEFERRED. H1.4 Breastfeeding initiation rates to continue as a temporary replacement proxy measure</b></p> <p><b>PLEASE SEE PROXY BELOW</b></p> <p><b>VITAL SIGNS VSB11</b></p>



NI	NI Description	Baseline 2007/8	LAA Improvement Target			Responsible Officer	Theme Lead	*Lead partner/s + Signed-up Partners	Com Plan	Priority	Notes
			2008/9	2009/10	2010/11						
Proxy (53)	Proxy Designated Indicator  Percentage increase in the uptake of breast feeding	76.3% (2006/07)	82.15	83.07	83.07	Debbie Stark	Mark Richards	*Torbay Care Trust	Stronger	Children and young people – Be Healthy	

NI	NI Description	Baseline 2007/8	LAA Improvement Target			Responsible Officer	Theme Lead	*Lead partner/s + Signed-up Partners	Com Plan	Priority	Notes
			2008/9	2009/10	2010/11						
54	<p><b><u>Services for Disabled Children</u></b></p> <p><i>This indicator will assess parents' general experience of services for disabled children (aged 0 – 19) and the extent to which services for disabled children are delivered according to the 'core offer' standards:</i></p> <p><i>good provision of information;</i></p> <p><i>transparency in how the available levels of support are determined;</i></p> <p><i>integrated assessment;</i></p> <p><i>participation of disabled children and their families in local services, and;</i></p> <p>Accessible feedback and complaints procedures.</p>	114	125	150	180	<b>Keith Thompson</b>	Russell Knight	*Children's Trust/Torbay Council		Children and young people – <i>Be Healthy</i>	<p>Local Proxy Target</p> <p>GOSW have requested that we agree 3 year local targets although these will be dropped at the refresh when survey data is available.</p>



NI	NI Description	Baseline 2007/8	LAA Improvement Target			Responsible Officer	Theme Lead	*Lead partner/s + Signed-up Partners	Com Plan	Priority	Notes
			2008/9	2009/10	2010/11						
57	<p><b><u>PLEASE NOTE:</u></b> This indicator will be deferred until 2009/2010</p> <p><b><u>Children and young people's participation in high-quality PE and sport for introduction in 2009/10</u></b></p> <p><i>To encourage all young people to increase participation in sport. 'Young people' are all those aged 5-19. All 5-16 year olds will have the chance to do 2 hours of high quality Physical Education (PE) and Sport within the school day and up to 3 additional hours of sport beyond the school day.</i></p>	Estimate 89% based on previous Local measure for the numbers of CYP completing 2 hrs a week sport	n/a	TBC**	TBC**	Tony Porter	Russell Knight	*Torbay Council Schools	Learning	Children and young people - Be healthy/positive contribution	Targets will be sent in line with national expected bandings once a baseline has been established for this indicator.



NI	NI Description	Baseline 2007/8	LAA Improvement Target			Responsible Officer	Theme Lead	*Lead partner/s + Signed-up Partners	Com Plan	Priority	Notes
			2008/9	2009/10	2010/11						
62	<p><b><u>The Percentage of children looked after at 31<sup>st</sup> March with three or more placements during the year.</u></b></p> <p><i>All placements of 24 hours or more are counted, regardless of duration. Any placements that were already open on 1 April at the beginning of the year, and any which were open on 31 March at the end of the year are included.</i></p>	18% (2006/07)	15%	14 %	12%	Keith Thompson	Russell Knight	*Torbay Council +Schools +Partners (Local Safeguarding Board)	Learning	Children and young people – Stay Safe	

NI	NI Description	Baseline 2007/8	LAA Improvement Target			Responsible Officer	Theme Lead	*Lead partner/s + Signed-up Partners	Com Plan	Priority	Notes
			2008/9	2009/10	2010/11						
69	<p><b><u>Children who have experienced bullying</u></b></p> <p><i>The percentage of children who have experienced bullying at least once or more in the past 4 weeks, based on responses to the TellUs survey carried out on year 6, 8 and 10 pupils in schools.</i></p> <p><i>'Bullying' is repeated behavior which makes other people feel uncomfortable or threatened whether this is intended</i></p>	30.00%	Below national average by 1%	Below national average by 1%	Below national average by 1%	Ali Matthews	Russell Knight	*Torbay Council +Schools +Partners (Local Safeguarding Board)	Learning	Children and young people – Stay Safe	



NI	NI Description	Baseline 2007/8	LAA Improvement Target			Responsible Officer	Theme Lead	*Lead partner/s + Signed-up Partners	Com Plan	Priority	Notes
			2008/9	2009/10	2010/11						
79	<p><b><u>Achievement of a level 2 qualification by the age of 19</u></b></p> <p><i>This indicator reports the percentages of young people attaining Level 2 by age 19 in a Local Authority area. Achieving Level 2 by the age of 19 represents an important platform for employability, further learning and adulthood.</i></p> <p><b>Collection interval: Annual.</b></p>	70% (2006/07)	74.6%	76.5%	78.4%	Tony Porter	Russell Knight	*Schools, +Torbay Council	Learning	Children and young people – <i>Enjoy and Achieve</i>	



NI	NI Description	Baseline 2007/8	LAA Improvement Target			Responsible Officer	Theme Lead	*Lead partner/s + Signed-up Partners	Com Plan	Priority	Notes
			2008/9	2009/10	2010/11						
110		→	<p><b>Indicator does not become active until 2009 – Place to be held by existing stretch target – please see C4.1 Listed below on page 67</b></p>			Ali Matthews	Russell Knight	*Torbay Council	Learning	Children and young people – <i>Make a positive contribution</i>	<p><b>Proxy Designated Indicator</b> See C4.1 listed below</p>



NI	NI Description	Baseline 2007/8	LAA Improvement Target			Responsible Officer	Theme Lead	*Lead partner/s + Signed-up Partners	Com Plan	Priority	Notes
			2008/9	2009/10	2010/11						
111	<p><b><u>First time youth offending</u></b></p> <p><i>The number of first-time entrants to the youth justice system, where first time entrants are defined as young people (aged 10-17) who receive their first substantive outcome (relating to a reprimand, a final warning with or without an intervention, or a court disposal for those who go directly to court without a reprimand or final warning).</i></p>	299	296	TBC	TBC	Fred Pethard	Kirsty Mooney	*Safer Communities Torbay	Learning	Children and young people – <i>Make a positive contribution</i>	<p><b>Local Proxy Target</b></p> <p>Baseline will be set in 2008 and substantive targets for 09/10 and 10/11 will be negotiated at the first annual refresh”.</p> <p><b>Local proxy to be used in the meantime.</b></p>

NI	NI Description	Baseline 2007/8	LAA Improvement Target			Responsible Officer	Theme Lead	*Lead partner/s + Signed-up Partners	Com Plan	Priority	Notes
			2008/9	2009/10	2010/11						
112	<p><b><u>Under 18 conception rate</u></b></p> <p><i>The change in the rate of under-18 conceptions per 1,000 girls aged 15-17 years resident in the area for the current calendar year, as compared with the 1998 baseline rate, shown as a percentage of the 1998 rate.</i></p> <p><i>Collection Interval: Calendar Year</i></p>	44.2 (1998) 51.1 (2006)	36.6 (-17%)	29.4 (-34%)	22.1 (-50%)	Siobhan Grady	Russell Knight	Torbay Care Trust Torbay Council Schools *Children's Trust	Stronger	Children and young people – <i>Make a positive contribution</i>	VITAL SIGNS VSB08

NI	NI Description	Baseline 2007/8	LAA Improvement Target			Responsible Officer	Theme Lead	*Lead partner/s + Signed-up Partners	Com Plan	Priority	Notes
			2008/9	2009/10	2010/11						
117	<p><b><u>16 to 18 year olds who are not in education, training or employment</u></b></p> <p><i>The percentage of 16 to 18 year olds who are not in education, employment or training (NEET).</i></p> <p><b>Collection interval:</b> Data are collected monthly. However, this indicator uses an annual result which is based on three one month snapshots at the end of November, December and January each year.</p>	4.70	4.70	4.50	4.30	Ali Matthews	Russell Knight	*Torbay Council/ +Connexions +South Devon College	Learning	Children and young people – Economic well-being	



NI	NI Description	Baseline 2007/8	LAA Improvement Target			Responsible Officer	Theme Lead	*Lead partner/s + Signed-up Partners	Com Plan	Priority	Notes
			2008/9	2009/10	2010/11						
135	<p><b><u>Carers receiving needs assessment or review and a specific carer's service, or advice and information</u></b></p> <p><i>The number of carers whose needs were assessed or reviewed by the council in a year who received a specific carers service, or advice and information in the same year as a percentage of people receiving a community based service in the year.</i></p> <p><b>Collection Interval:</b> Financial year.</p>	46.3%	46%	47.5%	49%	James Drummond	Mark Richards	*Torbay Care Trust	Stronger	Adult health and well-being	<b>VITAL SIGNS VSC18.</b>

NI	NI Description	Baseline 2007/8	LAA Improvement Target			Responsible Officer	Theme Lead	*Lead partner/s + Signed-up Partners	Com Plan	Priority	Notes
			2008/9	2009/10	2010/11						
136	<p><b><u>People supported to live independently through social services (all ages)</u></b></p> <p><i>This indicator will measure the number of adults all ages per 100,000 population that are assisted directly through social services assessed/care planned, funded support to live independently, plus those supported through organisations that receive social services grant funded services.</i></p> <p><b>Collection interval:</b> <i>Collected annually during the financial year</i></p>	2260	2420 (7%)	2701 (12%)	3100 (37% over 3 yrs)	John Bryant	Mark Richards	*Torbay Care Trust Torbay Council (Supporting People)	Stronger	Adult health and well-being	<b>VITAL SIGNS VSC03.</b>

NI	NI Description	Baseline 2007/8	LAA Improvement Target			Responsible Officer	Theme Lead	*Lead partner/s + Signed-up Partners	Com Plan	Priority	Notes
			2008/9	2009/10	2010/11						
141	<p><b><u>Percentage of vulnerable people achieving independent living</u></b></p> <p><i>Aims to measure the extent to which housing related support helps people move on in a planned way to more independent living</i></p> <p><i>Collection interval: Quarterly (every February, May, August, November)</i></p>	74%	74%	76%	78%	Fran Mason	Mark Richards	*Torbay Council (Supporting People) Torbay Care Trust Probation	Stronger	Tackling exclusion and promoting equality	<b>VITAL SIGNS VSC03</b>

NI	NI Description	Baseline 2007/8	LAA Improvement Target			Responsible Officer	Theme Lead	*Lead partner/s + Signed-up Partners	Com Plan	Priority	Notes
			2008/9	2009/10	2010/11						
153	<p><b><u>Working age people claiming out of work benefits in the worst performing neighborhoods</u></b></p> <p><i>This indicator measures the percentage of the working age population who are claiming out of work benefits. Working age benefits include the main out-of-work client group categories (unemployed people on Jobseekers Allowance, Lone Parents on Income Support, Incapacity Benefits customers, and others on income-related benefits with the exception of carers disabled and bereaved clients who are not subject to activation policies in the same way as other groups)</i></p> <p><b>Collection Interval:</b> Quarterly (With a 6 month lag)</p>	30.1%	30.1%	29.6%	28.8%	Joan Farleigh	Alan Denby	*Job Center Plus +New Economy Group	Economy	Local Economy	



NI	NI Description	Baseline 2007/8	LAA Improvement Target			Responsible Officer	Theme Lead	*Lead partner/s + Signed-up Partners	Com Plan	Priority	Notes
			2008/9	2009/10	2010/11						
154	<p><b><u>Net additional homes provided</u></b></p> <p><i>This indicator measures the net increase in dwelling stock over one year.</i></p> <p><b>Collection Interval: Annual. Data</b></p>	460	505	517	514	Les Crump	Alan Denby	*Torbay Council	Economy	Local Economy	<b>3 Year total = 1536</b>

NI	NI Description	Baseline 2007/8	LAA Improvement Target			Responsible Officer	Theme Lead	*Lead partner/s + Signed-up Partners	Com Plan	Priority	Notes
			2008/9	2009/10	2010/11						
155	<p><b><u>Number of affordable homes delivered</u></b></p> <p><i>Total supply of social rent housing and intermediate housing. The Government defines affordable housing as including <b>social-rented</b> and <b>intermediate</b> housing". Note this can include pitches on Gypsy and Traveler sites owned and managed by local authorities or registered social landlords.</i></p> <p><b>Collection Interval: Annual.</b></p>	114	150	155	160	Simon Sherbersky	Alan Denby	*Torbay Council	Economy	Local Economy	<b>465 over 3 years</b>

NI	NI Description	Baseline 2007/8	LAA Improvement Target			Responsible Officer	Theme Lead	*Lead partner/s + Signed-up Partners	Com Plan	Priority	Notes
			2008/9	2009/10	2010/11						
163	<p><b><u>Working age population qualified to at least Level 2 or Higher</u></b></p> <p><i>Proportion of population aged 19-64 for males and 19-59 for females qualified to at least level 2 or higher</i></p> <p><b>Collection interval: Annually (calendar year)</b></p>	69.5%	71%	73%	75.5%	Alan Denby	Chief Executive for the Torbay Development Agency	*LSC	Economy	Local Economy	
164	<p><b><u>Working age population qualified to at least Level 3 or higher</u></b></p> <p><i>Proportion of population aged 19-64 for males and 19-59 for females qualified to at least level 3 or higher.</i></p> <p><b>Collection Interval: Annually (calendar year)</b></p>	45.9%	47.4%	49.4%	51.9%	Alan Denby	Chief Executive for the Torbay Development Agency	*LSC	Economy	Local Economy	



NI	NI Description	Baseline 2007/8	LAA Improvement Target			Responsible Officer	Theme Lead	*Lead partner/s + Signed-up Partners	Com Plan	Priority	Notes
			2008/9	2009/10	2010/11						
166	<p><b><u>Average earnings of employees in the area</u></b></p> <p><i>Median earnings by employees in an area</i></p> <p><b>Collection Interval:</b> Annual (data relates to a specific pay period in April of each year)</p>	£366 (3.8% Improvement)	£381 (4.2% Improve ment)	£397 (4.2% Improve ment)	£414 (4.2% Improve ment)	Alan Denby	Chief Executive for the Torbay Development Agency	*Torbay Council with TDA	Economy	Local Economy	

NI	NI Description	Baseline 2007/8	LAA Improvement Target			Responsible Officer	Theme Lead	*Lead partner/s + Signed-up Partners	Com Plan	Priority	Notes
			2008/9	2009/10	2010/11						
175	<p><b><u>Access to services and facilities by public transport, walking and cycling</u></b></p> <p><i>This indicator measures access to selected core services and facilities by individuals via non-private modes of transport, which may include, but is not limited to: public transport, demand responsive transport, walking and cycling.</i></p> <p><b>Collection Interval:</b> Annual – Financial year</p>	39%	44%	49%	54%	Peter Brunt	Sally Farley	*Torbay Council	Pride	Local Economy	

NI	NI Description	Baseline 2007/8	LAA Improvement Target			Responsible Officer	Theme Lead	*Lead partner/s + Signed-up Partners	Com Plan	Priority	Notes
			2008/9	2009/10	2010/11						
186	<p><b><u>Per capita CO2 emissions in the LA area</u></b></p> <p><b><i>Percentage reduction of the per capita CO2 emissions in the Local Authority Area:</i></b></p> <p><b><i>Collection Interval: Statistics are produced annually by Defra.</i></b></p>	2005/06 5.6t	5.43t (3% reduction)	5.18t (7.5% reduction)	4.9t (12.5% reduction)	Doug Eltham	Sally Farley	*Torbay Council +TCT +Devon & Cornwall Constabulary	Pride	Environmental sustainability	Target subject to review during May / June 08 for Torbay's aspirations to be compared to those of the other local authorities in the south west. Target also subject to review on annual basis as climate change science and the scope and quality of locally available data improves. Demonstrable progress towards 2010/11 target will be reviewed at end of this LAA period when 08 data will be made available by Defra.



NI	NI Description	Baseline 2007/8	LAA Improvement Target			Responsible Officer	Theme Lead	*Lead partner/s + Signed-up Partners	Com Plan	Priority	Notes
			2008/9	2009/10	2010/11						
187	<p><b><u>Tackling fuel poverty – people receiving income based benefits living in homes with a low energy efficiency rating</u></b></p> <p><i>The indicator measures the proportion of households on income related benefits for whom an energy assessment of their housing has been carried out, living in homes with</i></p> <ul style="list-style-type: none"> <li><i>(i) Low energy efficiency</i></li> <li><i>(ii) High energy efficiency</i></li> </ul> <p><b>Collection interval: Annual</b> <i>(Financial year)</i></p>		Establish baseline	TBD	TBD	Isobelle Belcher	Simon Sherbersky	*Torbay Council	Pride	Environmental sustainability	

NI	NI Description	Baseline 2007/8	LAA Improvement Target			Responsible Officer	Theme Lead	*Lead partner/s + Signed-up Partners	Com Plan	Priority	Notes
			2008/9	2009/10	2010/11						
192	<p><b><u>Household waste recycled and composted</u></b></p> <p><i>The percentage of household waste arising which have been sent by the authority for reuse, recycling, composting or anaerobic digestion. 'Household waste' means those types of waste which are to be treated as household waste for the purposes of Part II of the Environmental Protection Act 1990 by reason of the provisions of the Controlled Waste Regulations 1992.</i></p> <p><b>Collection Interval:</b> Financial Year</p>	26% (2006/07)	29%	31%	32%	Anne Roberts	Sally Farley	*Torbay Council	Pride	Environmental sustainability	



NI	NI Description	Baseline 2007/8	LAA Improvement Target			Responsible Officer	Theme Lead	*Lead partner/s + Signed-up Partners	Com Plan	Priority	Notes
			2008/9	2009/10	2010/11						
193	<p><b><u>Municipal waste land filled</u></b></p> <p><i>The percentage of municipal waste which is sent to landfill.</i></p> <p><b>Collection Interval: Financial year</b></p>	68% (2006/07)	66%	64%	63%	Anne Roberts	Sally Farley	*Torbay Council	Pride	Environmental sustainability	

### Statutory Children's Indicators (16)

NI	NI Description	Baseline 2007/8	LAA Improvement Target			Responsible Officer	Theme Lead	*Lead partner/s + Signed-up Partners -	Priority	Com Plan	Notes
			2008/9	2009/10	2010/11						
72	<p><b><u>Achievement of at least 78 points across the Early Years Foundation stage with at least 6 in each of the scales in Personal Social and Emotional Development and Communication, Language and Literacy</u></b></p> <p><i>Collection interval: Annual (academic year)</i></p>	42%	51%	52%	53%	Lyn Armitage	Russell Knight	*Schools and Torbay Council	Children and young people – <i>Enjoy and achieve</i>	Learning	

NI	NI Description	Baseline 2007/8	LAA Improvement Target			Responsible Officer	Theme Lead	*Lead partner/s + Signed-up Partners -	Priority	Com Plan	Notes
			2008/9	2009/10	2010/11						
73	<p><b><u>Achievement at level 4 or above in both English and Maths at KS2 (Threshold)</u></b></p> <p><i>The number of pupils achieving Level 4+ in both English and Maths at KS2 as a percentage of the number of pupils at the end of KS2 with valid National Curriculum test results in both English and Maths.</i></p> <p><b>Collection interval: Annual</b> (academic year)</p>	67.90%	79%	81%	82%	Tony Porter	Russell Knight	*Schools and Torbay Council	Children and young people – <i>Enjoy and achieve</i>	Learning	

NI	NI Description	Baseline 2007/8	LAA Improvement Target			Responsible Officer	Theme Lead	*Lead partner/s + Signed-up Partners -	Priority	Com Plan	Notes
			2008/9	2009/10	2010/11						
74	<p><b><u>Achievement at level 5 or above in both English and Maths at Key stage 3 (threshold)</u></b></p> <p><i>The number of pupils achieving Level 5+ in both English and Maths at KS3 as a percentage of the number of pupils at the end of KS3 with valid National Curriculum test results in both English and Maths.</i></p> <p><b>Collection interval: Annual (academic year)</b></p>	72%	75%	76%	77%	Tony Porter	Russell Knight	*Schools and Torbay Council	Children and young people – <i>Enjoy and achieve</i>	Learning	

NI	NI Description	Baseline 2007/8	LAA Improvement Target			Responsible Officer	Theme Lead	*Lead partner/s + Signed-up Partners -	Priority	Com Plan	Notes
			2008/9	2009/10	2010/11						
75	<p><b><u>Achievement of 5 or more A* - C grades at GCSE or equivalent including English and Maths (threshold)</u></b></p> <p><i>The number of pupils achieving 5 or more A*-C or equivalent including English and Maths at KS4 as a percentage of the number of pupils at the end of KS4.</i></p> <p><b>Collection interval:</b> Annual (academic year)</p>	51%	55%	56%	57%	Tony Porter	Russell Knight	*Schools and Torbay Council	Children and young people – <i>Enjoy and achieve</i>	Learning	

NI	NI Description	Baseline 2007/8	LAA Improvement Target			Responsible Officer	Theme Lead	*Lead partner/s + Signed-up Partners -	Priority	Com Plan	Notes
			2008/9	2009/10	2010/11						
83	<p><b><u>Achievement at level 5 or above in Science at Key stage 3</u></b></p> <p><i>The number of pupils achieving level 5+ in Science at KS3 as a percentage of the number of pupils with a valid National Curriculum test result in KS3 Science.</i></p> <p><b>Collection interval: Annual</b> (Academic year)</p>	76%	78%	79%	80%	Tony Porter	Russell Knight	*Schools and Torbay Council	Children and young people – <i>Enjoy and achieve</i>	Learning	

NI	NI Description	Baseline 2007/8	LAA Improvement Target			Responsible Officer	Theme Lead	*Lead partner/s + Signed-up Partners -	Priority	Com Plan	Notes
			2008/9	2009/10	2010/11						
87	<p><b><u>Secondary school persistent absence rate</u></b></p> <p><i>The number of persistent absentees as a percentage of the total number of local authority maintained secondary school pupil enrolments. A 'persistent absentee' is a pupil who has accumulated the threshold number of half-day sessions of absence over the relevant statistical reporting period. Collection interval: Data collected termly.</i></p>	9.03%	6.67%	5.33%	4.97%	Ali Matthews	Russell Knight	*Schools and Torbay Council	Children and young people – <i>Enjoy and achieve</i>	Learning	

NI	NI Description	Baseline 2007/8	LAA Improvement Target			Responsible Officer	Theme Lead	*Lead partner/s + Signed-up Partners -	Priority	Com Plan	Notes
			2008/9	2009/10	2010/11						
92	<p><b><u>Narrowing the gap between the lowest achieving 20% in the early years foundation stage profile and the rest</u></b></p> <p><i>The gap between the median Foundation Stage Profile score of all children locally and the mean score of the lowest achieving 20% of children locally, as a percentage of the median score of all children locally.</i></p> <p><b>Collection Interval:</b> Annual for the academic year</p>	33.10%	30%	28%	26%	Lyn Armitage	Russell Knight	*Schools and Torbay Council	Children and young people – <i>Enjoy and achieve</i>	Learning	

NI	NI Description	Baseline 2007/8	LAA Improvement Target			Responsible Officer	Theme Lead	*Lead partner/s + Signed-up Partners -	Priority	Com Plan	Notes
			2008/9	2009/10	2010/11						
93	<p><b><u>Progression by 2 levels in English between key stage 1 and key stage 2</u></b></p> <p><i>The number of pupils at the end of KS2 making 2 levels progress in English between KS1 and KS2, as a percentage of the number of pupils at the end of KS2 with valid National Curriculum test results (including absent pupils and pupils unable to access the test).</i></p> <p><b>Collection interval: Annual</b> (Academic year)</p>	74%	84%	85%	86%	Tony Porter	Russell Knight	*Schools and Torbay Council	Children and young people – <i>Enjoy and achieve</i>	Learning	

NI	NI Description	Baseline 2007/8	LAA Improvement Target			Responsible Officer	Theme Lead	*Lead partner/s + Signed-up Partners -	Priority	Com Plan	Notes
			2008/9	2009/10	2010/11						
94	<p><b><u>Progression by 2 levels in Maths between key stage 1 and key stage 2</u></b></p> <p><i>The number of pupils at the end of KS2 making 2 levels progress in Maths between KS1 and KS2, as a percentage of the number of pupils at the end of KS2 with valid National Curriculum test results (including absent pupils and pupils unable to access the test).</i></p> <p><b>Collection interval: Annual</b> <i>(academic year)</i></p>	80%	84%	85%	86%	Tony Porter	Russell Knight	*Schools and Torbay Council	Children and young people – <i>Enjoy and achieve</i>	Learning	

NI	NI Description	Baseline 2007/8	LAA Improvement Target			Responsible Officer	Theme Lead	*Lead partner/s + Signed-up Partners -	Priority	Com Plan	Notes
			2008/9	2009/10	2010/11						
95	<p><b><u>Progression by 2 levels in English between key stage 2 and key stage 3</u></b></p> <p><i>The number of pupils at the end of KS3 making 2 levels progress in English between KS2 and KS3, as a percentage of the number of pupils at the end of KS3 with valid National Curriculum test results (including absent pupils and pupils unable to access the test)</i></p> <p><b>.Collection interval: Annual (academic year)</b></p>	42%	40%	42%	44%	Tony Porter	Russell Knight	*Schools and Torbay Council	Children and young people – <i>Enjoy and achieve</i>	Learning	

NI	NI Description	Baseline 2007/8	LAA Improvement Target			Responsible Officer	Theme Lead	*Lead partner/s + Signed-up Partners -	Priority	Com Plan	Notes
			2008/9	2009/10	2010/11						
96	<p><b><u>Progression by 2 levels in Maths between key stage 2 and key stage 3</u></b></p> <p><i>The number of pupils at the end of KS3 making 2 levels progress in Maths between KS2 and KS3, as a percentage of the number of pupils at the end of KS3 with valid National Curriculum test results (including absent pupils and pupils unable to access the test).</i></p> <p><b>Collection interval: Annual</b></p>	63%	67%	68%	70%	Tony Porter	Russell Knight	*Schools and Torbay Council	Children and young people – <i>Enjoy and achieve</i>	Learning	



NI	NI Description	Baseline 2007/8	LAA Improvement Target			Responsible Officer	Theme Lead	*Lead partner/s + Signed-up Partners -	Priority	Com Plan	Notes
			2008/9	2009/10	2010/11						
97	<p><b><u>Progression by 2 levels in English between key stage 3 and key stage 4</u></b></p> <p><i>The number of pupils at the end of KS4 making 2 levels progress in English between KS3 and KS4, as a percentage of the number of pupils at the end of KS4 (with valid National Curriculum test results (including absent pupils and pupils unable to access the test) at KS3).</i></p> <p><b>Collection interval: Annual (academic year)</b></p>	62.80%	62%	64%	65%	Tony Porter	Russell Knight	*Schools and Torbay Council	Children and young people – <i>Enjoy and achieve</i>	Learning	

NI	NI Description	Baseline 2007/8	LAA Improvement Target			Responsible Officer	Theme Lead	*Lead partner/s + Signed-up Partners -	Priority	Com Plan	Notes
			2008/9	2009/10	2010/11						
98	<p><b><u>Progression by 2 levels in Maths between key stage 3 and key stage 4</u></b></p> <p><i>The number of pupils at the end of KS4 making 2 levels progress in Maths between KS3 and KS4, as a percentage of the number of pupils at the end of KS4 (with valid National Curriculum test results (including absent pupils and pupils unable to access the test) at KS3).</i></p> <p><b>Collection interval: Annual (academic year)</b></p>	27.30%	33%	36%	36%	Tony Porter	Russell Knight	*Schools and Torbay Council	Children and young people – <i>Enjoy and achieve</i>	Learning	

NI	NI Description	Baseline 2007/8	LAA Improvement Target			Responsible Officer	Theme Lead	*Lead partner/s + Signed-up Partners -	Priority	Com Plan	Notes
			2008/9	2009/10	2010/11						
99	<p><b><u>Children in care reaching level 4 in English and key stage 2</u></b></p> <p><i>The number of looked after children who have been in care for at least one year who were in year 6 (Key Stage 2) and who achieved at least level 4 in English, as a percentage of the total number of looked after children who were in care for at least one year who were in year 6 (Key Stage 2).</i></p> <p><b>Collection interval: Annual</b> <i>(Figures based on the academic year)</i></p>	28.6% (2 of 7)	38.00%	57.1% (4 of 7)	57.1% (4 of 7)	Keith Thompson	Russell Knight	*Schools and Torbay Council	Children and young people – <i>Enjoy and achieve</i>	Learning	

NI	NI Description	Baseline 2007/8	LAA Improvement Target			Responsible Officer	Theme Lead	*Lead partner/s + Signed-up Partners -	Priority	Com Plan	Notes
			2008/9	2009/10	2010/11						
100	<p><b><u>Children in care reaching level 4 in Maths at Key Stage 2</u></b></p> <p><i>The number of looked after children who have been in care for at least one year who were in year 6 (Key Stage 2) and who achieved at least level 4 in mathematics, as a percentage of the total number of looked after children who were in care for at least one year who were in year 6 (Key Stage 2).</i></p> <p><b>Collection interval: Annual</b> <i>(Figures based on the academic year)</i></p>	28.60% (2 of 7)	38%	57.1% (4 of 7)	57.1% (4 of 7)	Keith Thompson	Russell Knight	*Schools and Torbay Council	Children and young people – <i>Enjoy and achieve</i>	Learning	

NI	NI Description	Baseline 2007/8	LAA Improvement Target			Responsible Officer	Theme Lead	*Lead partner/s + Signed-up Partners -	Priority	Com Plan	Notes
			2008/9	2009/10	2010/11						
101	<p><b><u>Children in care achieving 5A*-C GCSE's (or equivalent) at key stage 4</u></b></p> <p><i>The number of looked after children who were in care for at least one year who were in year 11 and achieved the equivalent of at least 5 A*-C GCSEs, including English and mathematics (or equivalent) as a percentage of the total number of looked after children who were in care for at least one year who were in year 11.</i></p> <p><b>Collection interval Annual</b> <i>(Figures based on the academic year)</i></p>	15% (3 of 20)	12.50%	25% (5 of 20)	30% (6 of 20)	Keith Thompson	Russell Knight	*Schools and Torbay Council	Children and young people – Enjoy and achieve	Learning	

## Stretch targets (carried forward)

Ref	Local Indicator Description	Baseline 2007/8	LAA Improvement Target			Responsible Officer	Theme Lead	*Lead partner/s Signed-up Partners	Com Plan	Notes
C3.5	Percentage of children who achieve Lv4+ in English at Key Stage 2.	77% (2005/06 aca yr)	83%	85%		Tony Porter	Russell Knight	Schools and Torbay Council	Learning	Stretch carried forward
C3.6	Average points score at Key Stage 4	350 (2005/06 aca yr)	385	390		Tony Porter	Russell Knight	Schools and Torbay Council	Learning	Stretch carried forward
	The number of young people aged 13-19 gaining an accredited outcome, as measured by data used for BVPI 221b.	303 (2005/06)	492	625		Ali Matthews	Russell Knight	Torbay Council	Learning	Please see NI110
C5.1	The percentage of 16 – 18 year olds not in education, employment or training (NEET)	5.9% (2006/7)	4.7%	4.5%		Ali Matthews	Russell Knight	Schools and Torbay Council	Learning	Stretch carried forward

Ref	Local Indicator Description	Baseline 2007/8	LAA Improvement Target			Responsible Officer	Theme Lead	*Lead partner/s Signed-up Partners	Com Plan	Notes
H2.1	Number of 4 week quitters. <b>Please note: at the end of 2009/2010 we will replace the stretch Indicator with NI123</b>	885 (768 per 100K pop)	896 931 (+35 Stretch) (798 per 100k pop)	907 962 (+55 stretch) (814 per 100K pop)	918 (768 per 100k pop)	Mark Richards	Debbie Stark	Torbay Care Trust	Stronger	Stretch carried forward, Proxy for NI123, VITAL SIGNS VSB05
H2.2	Decrease the prevalence of smoking during pregnancy.	21.89%	17.69%	16.69%	NA	Mark Richards	Debbie Stark	Torbay Care Trust	Stronger	Stretch carried forward
H3.2	Number of people still active for 3 hours per week after 3 months of completing the scheme	62.5%	77%	79%	NA	Mark Richards	Debbie Stark	Torbay Care Trust	Stronger	Stretch carried forward
H3.3	Halt the rise in prevalence of obesity amongst primary school children (Height & Weight Survey)	12.10%	13.22% 295/2643 children	12.92% 299/2742 children	NA	Mark Richards	Debbie Stark	Torbay Care Trust	Stronger	Stretch carried forward. Proxy indicator for NI 55/56. VITAL SIGNS VSB09

Ref	Local Indicator Description	Baseline 2007/8	LAA Improvement Target			Responsible Officer	Theme Lead	*Lead partner/s Signed-up Partners	Com Plan	Notes
H5.1	Reduction in the number of emergency unscheduled bed days for people aged 75yrs or over.	TBC	TBC	TBC	2007 -10 142,463 (1500 less bed day	John Bryant	Debbie Stark	Torbay Care Trust	Stronger	Stretch carried forward Awaiting Q4 data for year end position & targets for next two years. VITAL SIGNS VSC20
S1.3	Reduce the proportion of young offenders who re-offend.	21% (2004/05 cohort).	19%	18%	NA	Fred Pethard	Kirsty Mooney	Safer Communities Torbay	Stronger	Stretch carried forward
S4.1	Increase in percentage of people who feel informed about what is being done to tackle anti-social behaviour in their local area (very or fairly well informed)	14% (2% confidence limit) February 2007	19%	22%	NA	Kirsty Mooney	Kirsty Mooney	Safer Communities Torbay	Stronger	Stretch carried forward
S5.2	Reduction in violent crime linked to the night time economy (9pm – 3.59am wounding and common assault in public places).	721 (2005/06)	684	666	NA	Kirsty Mooney	Kirsty Mooney	Safer Communities Torbay	Stronger	Stretch carried forward

Ref	Local Indicator Description	Baseline 2007/8	LAA Improvement Target			Responsible Officer	Theme Lead	*Lead partner/s Signed-up Partners	Com Plan	Notes
S6.1	Increase in the proportion of domestic violence incidents which result in a sanction detection	33% (2006/7)	38%	41%	NA	Kirsty Mooney	Kirsty Mooney	Safer Communities Torbay	Stronger	Stretch carried forward
S6.2	A reduction in ratio of repeat Domestic Violence incidents to those victims who are being managed by a Multi Agency Risk Assessment Conference (MARAC).	2.5 (2006 cohort)	2.4	2.2	NA	Kirsty Mooney	Kirsty Mooney	Safer Communities Torbay	Stronger	Stretch carried forward Baseline established in 2008. Previous LAA document had provisional data for this.
S8.1	An increase in the number of people recorded as or reporting that they have engaged in formal volunteering on an average of at least two hours per week over the past year	15% of population 15 years and over (2006/7)	15.7%	15.7%	NA	Tracey Cabache	Bernard Page	Change Up Consortium	Stronger	Stretch carried forward
S8.2	An increase in the number of Charitable Trustees in Torbay	1,205 (2006/7)	1,241	1,241	NA	Tracey Cabache	Bernard Page	Change Up Consortium	Stronger	Stretch carried forward
E1.3a	The number of offenders who complete the skills for life programme and achieve a vocational qualification	0 (2006/7)	16	16	NA	Simon Sherbersky	Simon Sherbersky	Shekinah Mission (Steady Work)	Stronger	Stretch carried forward

Ref	Local Indicator Description	Baseline 2007/8	LAA Improvement Target			Responsible Officer	Theme Lead	*Lead partner/s Signed-up Partners	Com Plan	Notes
								Torbay)		
E1.3b	Number of adults over 16 with a history of homelessness, or offending or substance misuse who complete work trials which result in sustainable work (of at least 16 hours per week for a minimum of 13 weeks)	0 (2006/7)	12	12	NA	Simon Sherbersky	Simon Sherber sky	Shekinah Mission (Steady Work Torbay)	Stronger	Stretch carried forward
E1.3c	Number of adults over 16 with a history of homelessness, or offending or substance misuse resettled into a supported housing option, either supported accommodation or independent accommodation with floating support, or supported into settled accommodation (with a minimum of 6 month tenancy)	0 2006/7	12	12	NA	Simon Sherbersky	Simon Sherber sky	Shekinah Mission (Steady Work Torbay)	Stronger	Stretch carried forward



## 9 Key Contacts

---

If you wish to contact us to ask any questions or for further information here are our contact details:

- Ian Knee: Assistant Director: [ian.knee@torbay.gov.uk](mailto:ian.knee@torbay.gov.uk)
- Bernard Page: Service Manager Policy & Partnership: [bernard.page@torbay.gov.uk](mailto:bernard.page@torbay.gov.uk)
- Lisa Milton: Partnership Support Assistant: [lisa.milton@torbay.gov.uk](mailto:lisa.milton@torbay.gov.uk)

## 10 Sources

Please find below links to useful information and sources of information used to establish Torbay's Priority indicators and develop Torbay's LAA.

Torbay's Community Plan: "Turning the tide"	<a href="http://www.torbay.gov.uk/communityplan.pdf">http://www.torbay.gov.uk/communityplan.pdf</a>
Torbay's Key Statistics document	<a href="http://www.torbay.gov.uk/keystatistics-torbay-sep2006.pdf">http://www.torbay.gov.uk/keystatistics-torbay-sep2006.pdf</a>
Joint Strategic Needs Assessment	<a href="http://www.torbaycaretrust.nhs.uk/publications/annual-reports/annual-report/2007-08/PublicHealthReportSept2007.pdf">http://www.torbaycaretrust.nhs.uk/publications/annual-reports/annual-report/2007-08/PublicHealthReportSept2007.pdf</a>
Community Partnerships	<a href="http://www.torbay.gov.uk/index/council/torbay-partnerships/communitypartnerships.htm">http://www.torbay.gov.uk/index/council/torbay-partnerships/communitypartnerships.htm</a>
Torbay's Local Area Agreement web-pages	<a href="http://www.torbay.gov.uk/laa">http://www.torbay.gov.uk/laa</a>
Torbay Strategic Partnership web-pages	<a href="http://www.torbay.gov.uk/torbaystrategicpartnership">http://www.torbay.gov.uk/torbaystrategicpartnership</a>
Children and Young People's Plan	<a href="http://www.torbay.gov.uk/childrensplan">http://www.torbay.gov.uk/childrensplan</a>
Torbay's Ward Profiles	<a href="http://www.torbay.gov.uk/index/community/facts-figures/wardprofiles.htm">http://www.torbay.gov.uk/index/community/facts-figures/wardprofiles.htm</a>
Torbay's Arts Strategy: "On The Crest of a Wave"	<a href="http://www.torbay.gov.uk/arts-strategy.pdf">http://www.torbay.gov.uk/arts-strategy.pdf</a>
Strategy For People Aged 50+: "People First"	<a href="http://www.torbay.gov.uk/peoplefirst">http://www.torbay.gov.uk/peoplefirst</a>
Economic Regeneration Strategy	<a href="http://www.torbay.gov.uk/index/business/regeneration/torbayeconomicregenerationframework.htm">http://www.torbay.gov.uk/index/business/regeneration/torbayeconomicregenerationframework.htm</a>
Waste Management Strategy	<a href="http://www.torbay.gov.uk/wastemanagementstrategy">http://www.torbay.gov.uk/wastemanagementstrategy</a>
Climate Change Strategy	<a href="http://www.torbay.gov.uk/index/environment-planning/environment/climatechange/climatechangestrategy.htm">http://www.torbay.gov.uk/index/environment-planning/environment/climatechange/climatechangestrategy.htm</a>