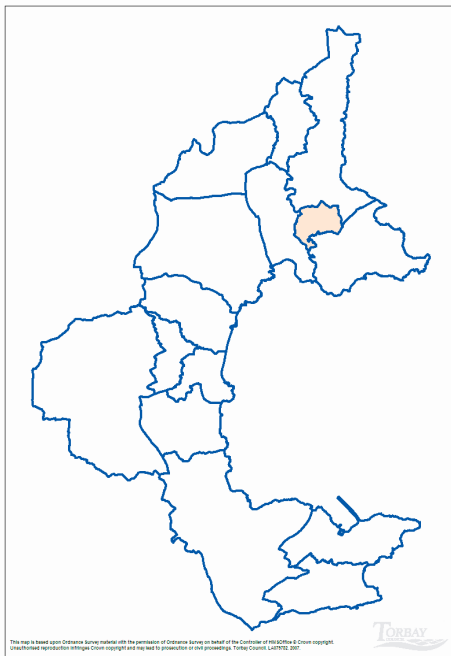


## Area overview

The electoral ward of Ellacombe is located in the town of Torquay, with the ward location shown in the below map.



## Quick Key Facts

- From the 2001 Census, the resident population for Ellacombe was 7,360.
- The ward covers an area of 95 hectares.
- With 9.3% of the ward area being Green space.
- Ellacombe has on average, 77.46 persons per hectare.
- The average age of residents is 37.7 years.
- 96.6% of the resident population in 2001, were White British.
- With 73.6% stating their religion as Christian.

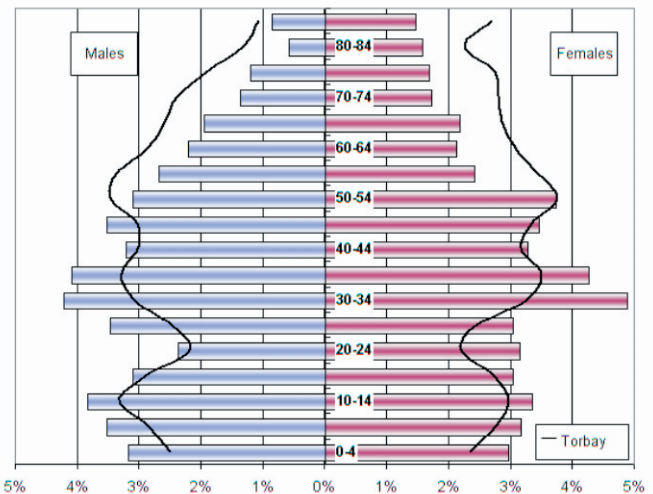
## Population

Age group	Count	Proportion of total population	
		Ellacombe	Torbay
All people	7,360		
0 to 19	1,928	26.2%	22.4%
Working Age	4,556	61.9%	56.3%
50 and Over	2,277	30.9%	44.9%

Source: 2001 Census, ONS

The overall population structure for the ward has a clear younger person bias when compared to the Torbay wide profile.

2001 CENSUS POPULATION PYRAMID FOR  
ELLACOMBE  
COMPARED TO TORBAY



Source: 2001 Census, ONS

## Quality of Life

Residents of Ellacombe have a lower than Torbay wide level of satisfaction with their local area as a place to live.

Satisfaction	Ellacombe *	Torbay**
Net Satisfaction	55.4%	70.1%
Neither	12.2%	15.4%
Net Dissatisfaction	32.4%	14.5%

Source: General User Satisfaction Survey

Over a third of residents believe that within their local area, people from different backgrounds get on well together – community cohesion.

Community Cohesion	Ellacombe *	Torbay**
Agree	37.8%	44.8%
Don't know	21.6%	27.2%
Disagree	21.6%	14.4%
Too few people in local area	10.8%	7.5%
All the same back ground	8.1%	6.2%

\* unweighted count of 74 residents

\*\* weighted response for Torbay

Source: 2006 General User Satisfaction Survey

Local Authorities have a statutory obligation to undertake a general user satisfaction survey every three years. These surveys allow Local Authorities to monitor key issues affecting residents. Two questions from the survey specifically asked about quality of life and what makes somewhere a good place to live, and what most needs improving, allowing comparison with previous survey results.

### Most important in making somewhere a good place to live

2006	The level of crime (13.2%)
	Clean streets (8.8%)
	Wage levels & local cost of living (8.4%)
	Health services (8.1%)
	Affordable decent housing (7.7%)
2003	Low level of crime (13.2%)
	Clean streets (9.3%)
	Job prospects (8.6%)
	Affordable decent housing (7.9%)
	Education provision (7.3%)

- In both surveys, a low level of crime is considered most important in making somewhere a good place to live.

### Most needs improving

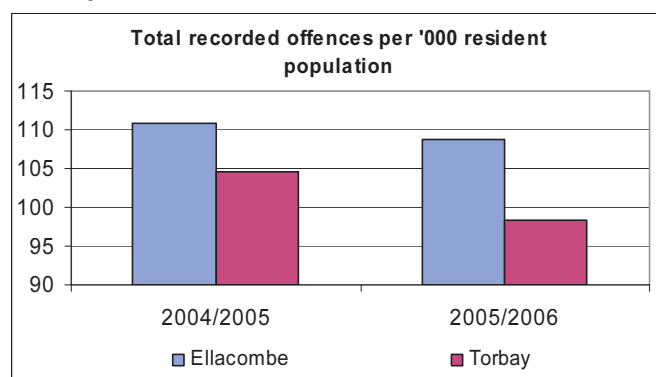
2006	Activities for teenagers (9.8%)
	Affordable decent housing (8.2%)
	The level of crime (8.2%)
	Job prospects (7.8%)
	Clean streets (7.5%)
2003	Wage levels & local cost of living (11.7%)
	Clean streets (10.2%)
	Low level of crime (9.5%)
	Road and pavement repairs (9.5%)
	Affordable decent housing (8.8%)

- Activities for teenagers most need improving for the residents of Ellacombe.

Percentages are based on responses to a multiple choice question, and are unweighted.

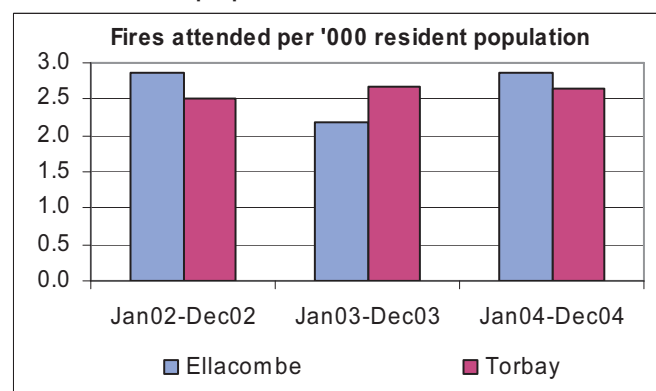
### Crime / Fire Rates

Torbay is a safe place to live, and the number of recorded offences per '000 resident population for Ellacombe is above that of the Torbay figure. The number of recorded offences over the period has dropped by 1.8% in Ellacombe. The following graph illustrates the rate of recorded offences compared to Torbay.



Source: Amethyst

In 2004 there were 21 primary fires attended by the Devon Fire and Rescue service in Ellacombe, or just under 3 fires attended per '000 resident population.



Source: ONS

## Limiting Long Term Illness (LLTI)

Limiting long-term illness covers any long-term illness; health problem or disability which limits daily activities or work.

LLTI	All people	People with LLTI	Proportion of population with LLTI
Ellacombe	7,360	1,482	20.14%
Torbay	129,706	29,867	23.0%

Source: 2001 Census, ONS

## Life Expectancy

Life expectancy at birth for person in Ellacombe ward is 77.5 years, compared to the Torbay average of 79.2 years (ward average).

Source: SWPHO

## Living Arrangements - Households

Just over a half of households are occupied by married or cohabiting couples, there is a higher than bay wide proportion of divorced / separated households.

Living arrangements	Ellacombe	Torbay
Married or Cohabiting	55.2%	60.6%
Not living in a couple	25.7%	19.8%
Divorced / Separated	12.3%	9.9%
Widowed	6.9%	9.7%

Source: 2001 Census, ONS

## Housing Tenure

Over two thirds of households are owner occupied – either outright, mortgaged or shared ownership, just under a quarter of households are private rented.

Tenure	Ellacombe	Torbay
All Occupied households	3,225	57,420
Owner Occupied	68.1%	74.0%
Housing Association	4.7%	8.2%
Private Rent	24.1%	15.1%
Other	3.1%	2.7%

Source: 2001 Census, ONS

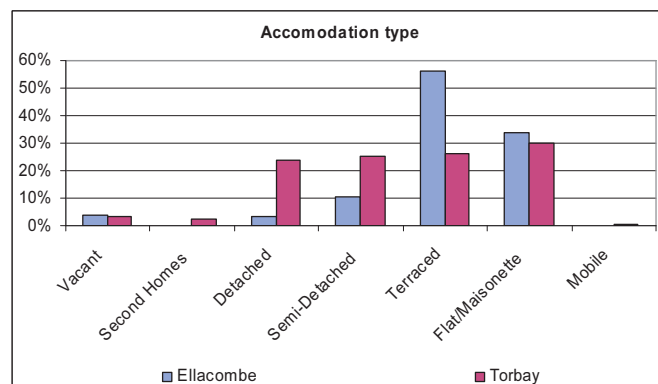
## Lone Parents

Lone parents	Proportion of household spaces: lone parent with dependent children
Ellacombe	10.2%
Torbay	6.6%

Source: 2001 Census, ONS

## Household Spaces

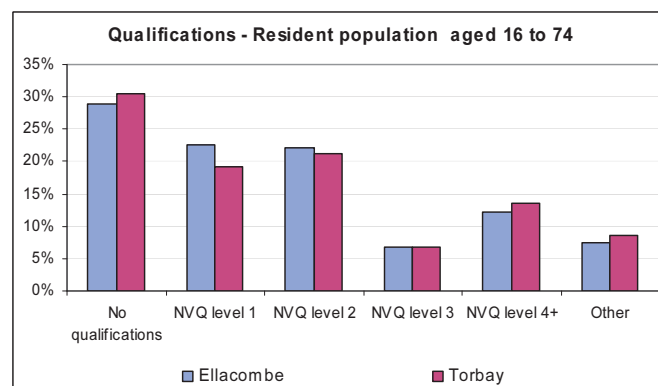
Over half the properties in the ward are terraced, noticeably higher than the bay proportion.



Source: 2001 Census, ONS

## Qualifications

Overall, residents in Ellacombe have a similar level of qualification than the Torbay wide figure. 12.2% having NVQ level 4+ (HND, degree or higher).



Source: 2001 Census, ONS

## Economically Active

Economically Active	Ellacombe	Torbay
All people aged 16 to 74	5,252	90,852
Economically active	3,572	68.0%
In employment	3,180	60.5%
Employees	2,644	50.3%
Self employed	536	10.2%
Unemployed	265	5.0%

Source: 2001 Census, ONS

Ellacombe has a higher proportion of people aged 16 to 74 economically active, than compared to the bay.

### Occupation group

Occupation groups	Ellacombe	Torbay
All people aged 16 - 74 in employment*	3,287	53,543
Managers and senior officials	12.0%	15.2%
Professional occupations	5.6%	7.3%
Associate professional and technical occupations	12.4%	12.5%
Administrative and secretarial occupations	10.4%	11.0%
Skilled trades occupations	16.1%	13.8%
Personal service occupations	10.7%	8.8%
Sales and customer service occupations	8.8%	9.0%
Process; plant and machine operatives	8.9%	9.4%
Elementary occupations	15.2%	13.0%

Source: 2001 Census, ONS

\*cells in original table have been randomly adjusted to avoid the release of confidential data.

### Industry of Employment

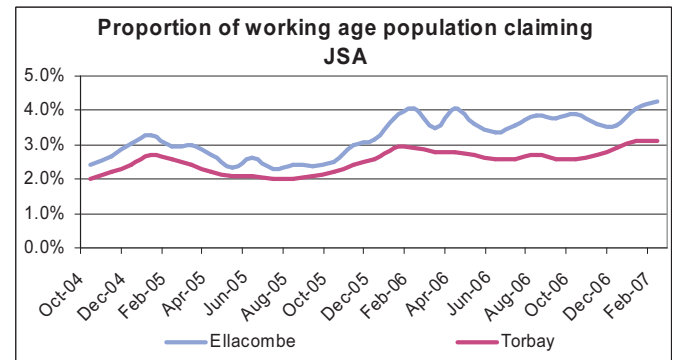
Industry of employment	Ellacombe	Torbay
All people aged 16 - 74 in employment	3,287	53,542
Agriculture; hunting; forestry	1.0%	0.9%
Fishing	0.1%	0.3%
Mining & quarrying	0.1%	0.2%
Manufacturing	13.4%	14.7%
Electricity; gas and water supply	0.7%	0.6%
Construction	10.9%	7.9%
Wholesale & retail trade; repair of motor vehicles	17.9%	18.5%
Hotels and catering	11.1%	10.3%
Transport storage and communication	5.4%	5.6%
Financial intermediation	1.9%	2.1%
Real estate; renting and business activities	7.1%	8.6%
Public administration and defence	4.3%	4.5%
Education	6.0%	6.3%
Health and social work	15.1%	14.0%
Other	5.1%	5.6%

Source: 2001 Census, ONS

### Benefit Claimants

The rate of Job Seekers Allowance claimants in Ellacombe is currently higher in comparison

to the Torbay figure.



Source: NOMIS

Overall claimant levels in Ellacombe are generally higher in comparison to the Torbay figure. Claimant levels as at August 2006.

Benefit Group	Ellacombe	Torbay
Income Support Claimants	11.3%	8.3%
Incapacity Benefit / Severe Disablement Allowance	12.0%	10.1%
Disability Living Allowance	6.7%	6.2%

Source: DWP

### Income

Model-Based Estimates of Income for Wards, 2001/02	£
England & Wales (Ward Average)	550
South West (Ward Average)	500
Torbay (Ward Average)	410
Ellacombe	380

Source: ONS

The model based income for Ellacombe, shows that the average total weekly household income in 2001/02 was lower than the Torbay, average at £380 per week.

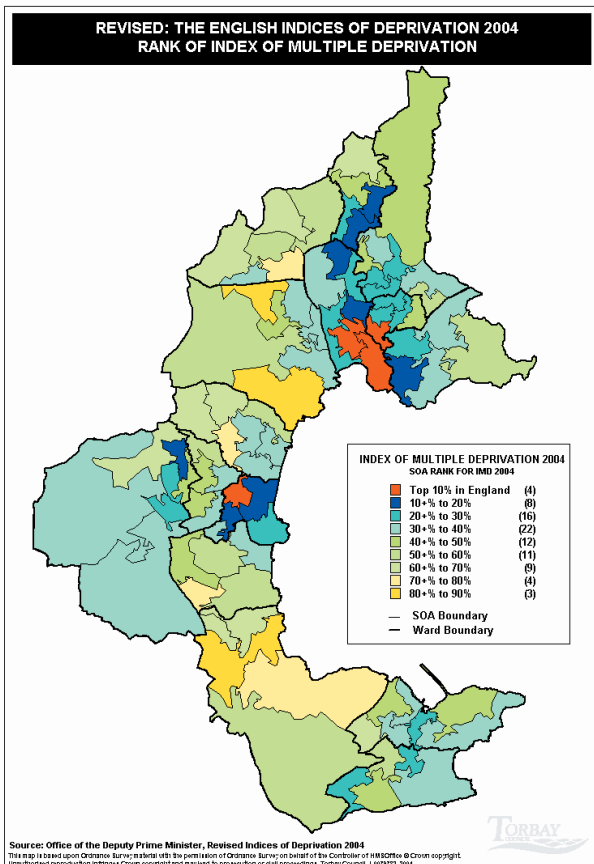
### Social Exclusion

Social exclusion happens when people or places suffer from a series of problems such as unemployment, discrimination, poor skills, low incomes, poor housing, high crime, ill health and family breakdown. When such problems combine they can create a vicious cycle. Social exclusion can happen as a result of problems that face one person in their life. But it can also start from birth, being born into poverty or to

parents with low skills still has a major influence on future life chances. The English Indices of Deprivation 2004 (revised) go some way to identifying hotspots of deprivation. The overall 'Index of Multiple Deprivation' is a model based on 7 domains covering the aforementioned social exclusion topics.

What was the Office of the Deputy Prime Minister, now the Department for Communities and Local Government published in 2004 a set of deprivation indices that were modelled on comparative social and economic datasets. The index of multiple deprivation is used widely to compare varying areas with associated levels of deprivation / social exclusion. Within the index, Torbay has areas of severe deprivation within the top 10% most deprived in England. The below map illustrates the areas (in red) in the top 10% most deprived in England.

### Index of Multiple Deprivation



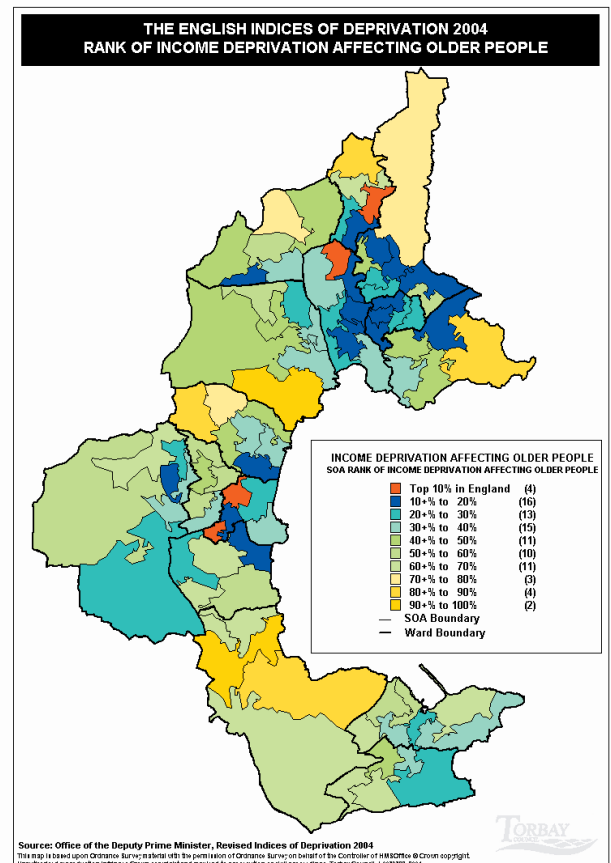
From the 2004 Indices of multiple deprivation there are a series of sub-domains that when aggregated together give the actual 7 domains that in turn lead to the Index of Multiple Deprivation.

The following maps illustrate the ranking within England for areas in Torbay for the following indicators:

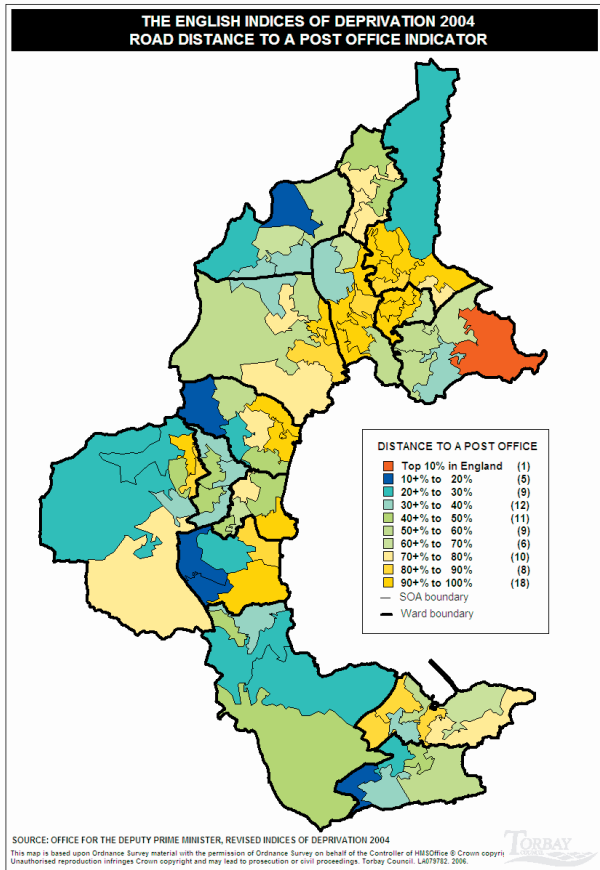
- Income deprivation affecting older people.
- Road distance to a Post Office.
- Road distance to a super market or convenience store.
- Road distance to a GP premises.
- Road distance to a primary school.

Further information of the English Indices of Deprivation 2004 can be obtained using the contact details at the end of this paper.

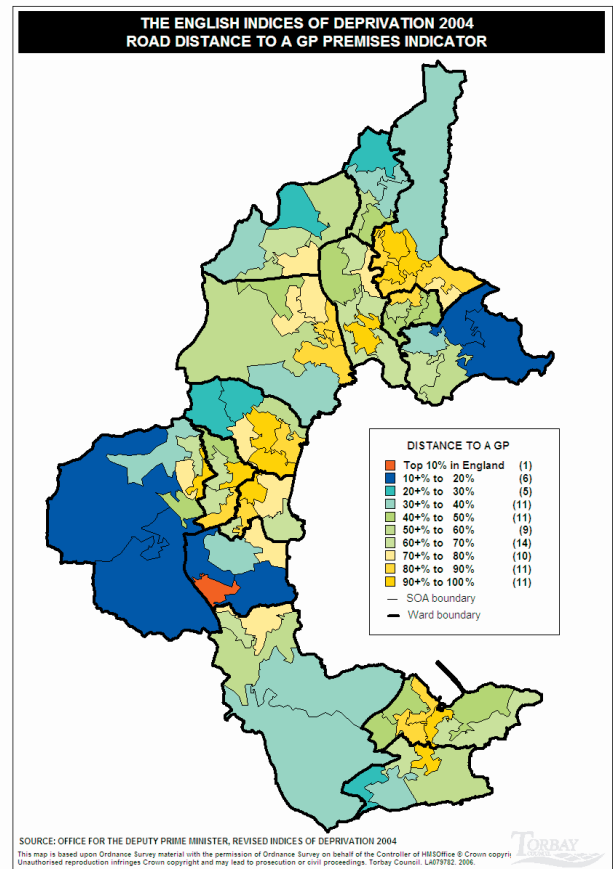
### Income deprivation affecting older people



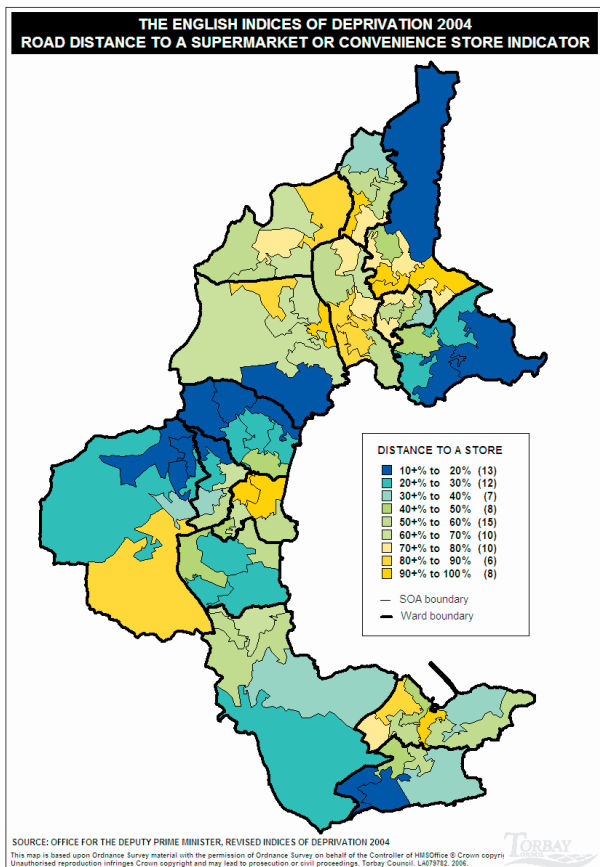
## Road distance to a Post Office



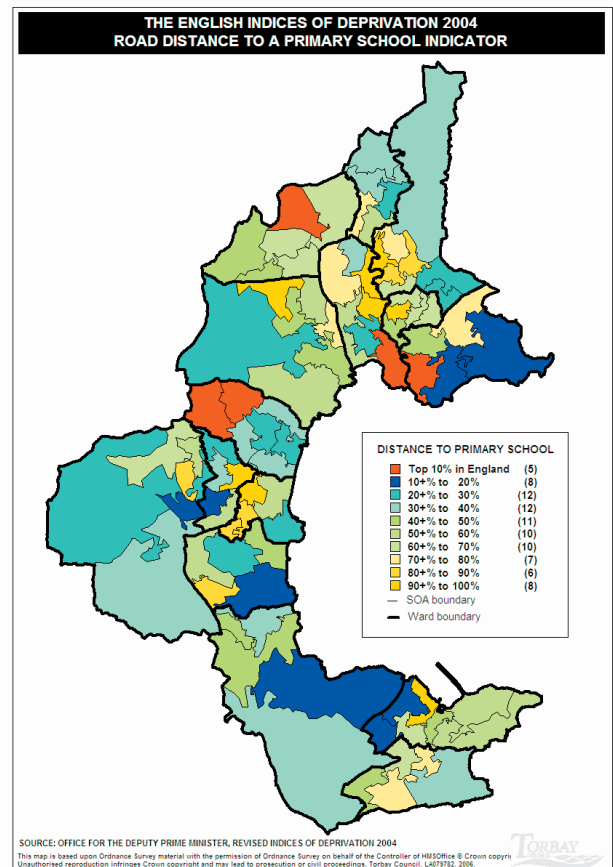
## Road distance to a GP premises



## Road distance to a super market or convenience store



## Road distance to a primary school

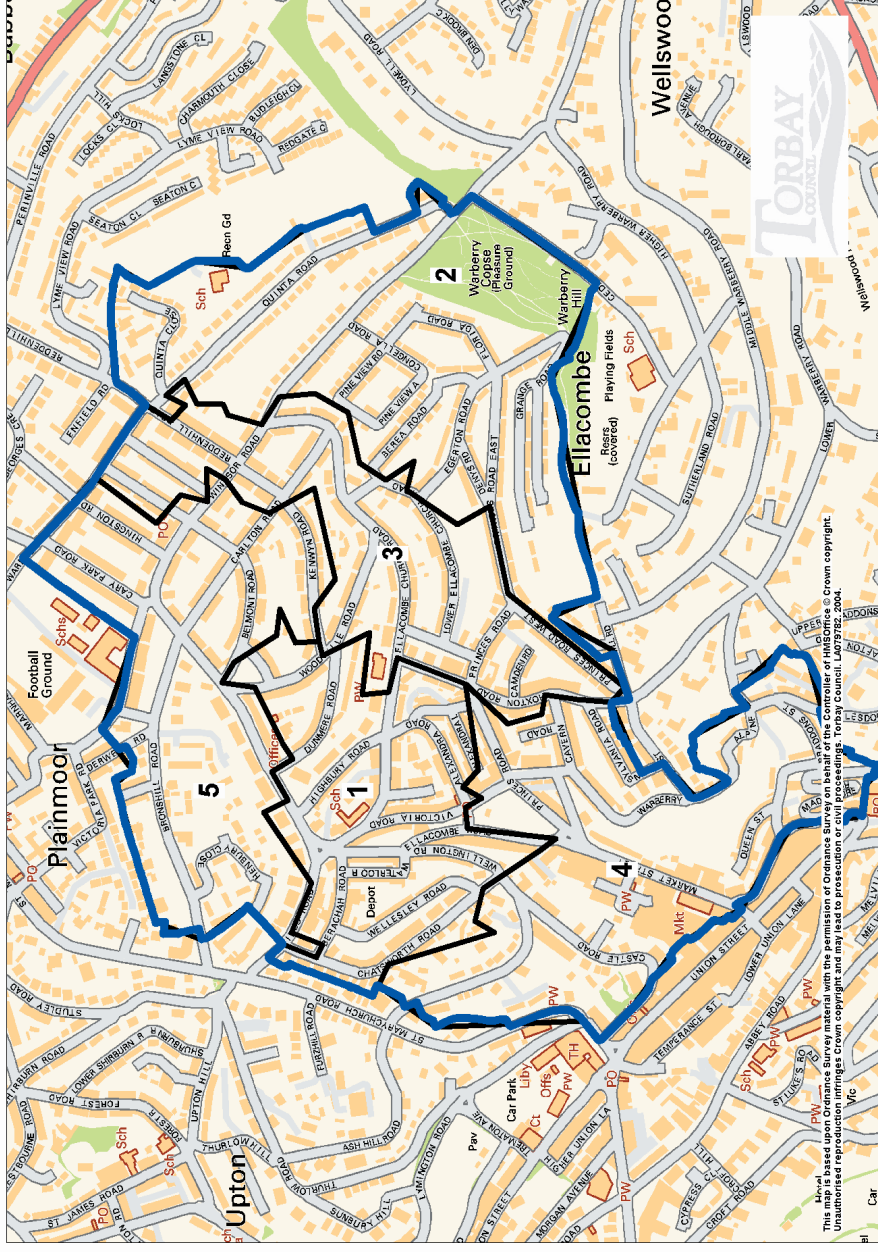


## ELLACOMBE WARD

Below the electoral geography of a ward, there exists further statistical geography. The most recognised and well used geographies are Super Output Areas (SOAs). SOAs are based in data from the 2001 census and have, on average, 650 households within. The SOA boundaries do NOT reflect neighbourhoods, they are purely for statistical comparison, and are used as a mechanism for publishing data to a relatively small area.

The map to the right shows the SOA structure for Ellacombe, whilst the below table details the national ranking for the specific SOA in the Index of Multiple Deprivation and the 7 associated domains plus two further sub-domains.

The English Indices of Deprivation 2004 (revised)



Area number for ward map	Index of Multiple Deprivation	Income Domain	Employment Domain	Health and Disability domain	Education, Skills and Training Domain	Barriers to Housing Domain	Crime and Disorder Domain	Living Environment Domain	Income deprivation affecting children	Income deprivation affecting older people
	RANK	RANK	RANK	RANK	RANK	RANK	RANK	RANK	RANK	RANK
1	6,796	6,422	7,588	10,769	8,878	20,304	7,670	975	6,316	6,104
2	13,196	10,029	12,871	17,412	11,424	16,325	21,631	8,203	11,701	8,036
3	7,933	8,987	6,358	12,435	10,729	18,598	12,451	1,227	12,624	7,365
4	2,460	2,860	1,402	5,639	5,434	15,355	4,490	1,542	3,060	3,449
5	8,298	7,503	6,312	12,288	12,947	22,993	9,374	2,833	9,585	6,432

Source: Office of the Deputy Prime Minister, The English Indices of Deprivation 2004 (revised)

Areas shaded in grey are SOAs ranked within the top 10% most deprived in England

For further information please contact  
The Consultation and Research Team  
Torbay Council

Tel: (01803) 20 8829 / 8827

E-mail: [statistics@torbay.gov.uk](mailto:statistics@torbay.gov.uk)

DLH/03/07