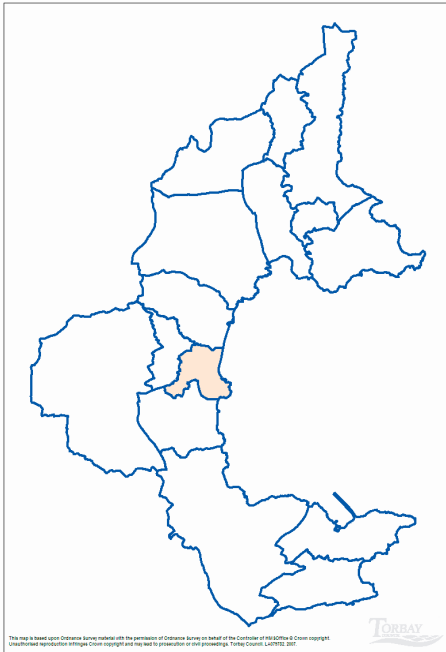


## Area overview

The electoral ward of Roundham with Hyde is located in the town of Paignton, with the ward location shown in the below map.



## Quick Key Facts

- From the 2001 Census, the resident population for Roundham with Hyde was 7,097.
- The ward covers an area of 154 hectares.
- With 11.0% of the ward area being Green space.
- Roundham with Hyde has on average, 46.09 persons per hectare.
- The average age of residents is 46.6 years.
- 97.0% of the resident population in 2001, were White British.
- With 72.0% stating their religion as Christian.

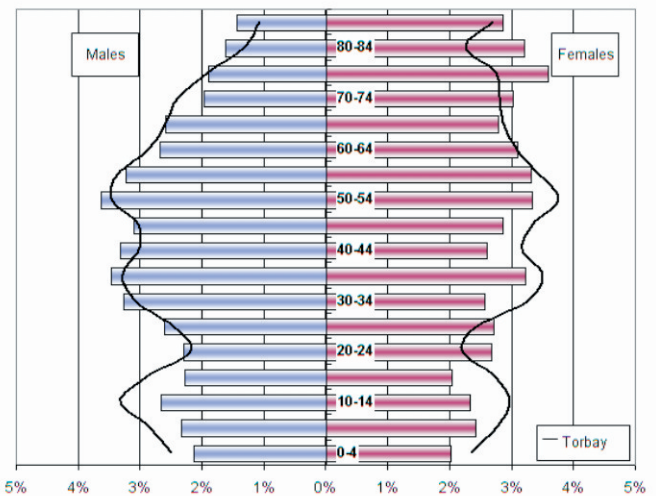
## Population

Age group	Count	Proportion of total population	
		Roundham with Hyde	Torbay
All people	7,097		
0 to 19	1,296	18.3%	22.4%
Working Age	3,864	54.4%	56.3%
50 and Over	3,355	47.3%	44.9%

Source: 2001 Census, ONS

The overall population structure for the ward is similar to the Torbay wide profile.

**2001 CENSUS POPULATION PYRAMID FOR  
ROUNDHAM WITH HYDE  
COMPARED TO TORBAY**



Source: 2001 Census, ONS

## Quality of Life

Residents of Roundham with Hyde have a lower than Torbay wide level of satisfaction with their local area as a place to live.

Satisfaction	Roundham with Hyde*	Torbay**
Net Satisfaction	63.0%	70.1%
Neither	19.8%	15.4%
Net Dissatisfaction	17.3%	14.5%

Source: 2006 General User Satisfaction Survey

44% of residents believe that within their local area, people from different backgrounds get on well together – community cohesion.

Community Cohesion	Roundham with Hyde *	Torbay**
Agree	44.0	44.8%
Don't know	26.2	27.2%
Disagree	16.7	14.4%
Too few people in local area	10.7	7.5%
All the same back ground	2.4	6.2%

\* unweighted count of 84 residents

\*\* weighted response for Torbay

Source: 2006 General User Satisfaction Survey

Local Authorities have a statutory obligation to undertake a general user satisfaction survey every three years. These surveys allow Local Authorities to monitor key issues affecting residents. Two questions from the survey specifically asked about quality of life and what makes somewhere a good place to live, and what most needs improving, allowing comparison with previous survey results.

### Most important in making somewhere a good place to live

2006	The level of crime (12.3%)
	Clean streets (11.6%)
	Affordable decent housing (9.4%)
	Health services (8.5%)
	Wage levels & local cost of living (6.9%)
2003	Low level of crime (13.8%)
	Health services (11.4%)
	Clean streets (11%)
	Affordable decent housing (9.3%)
	Job prospects (6.9%)

- In both surveys, a low level of crime is considered most important in making somewhere a good place to live.

### Most needs improving

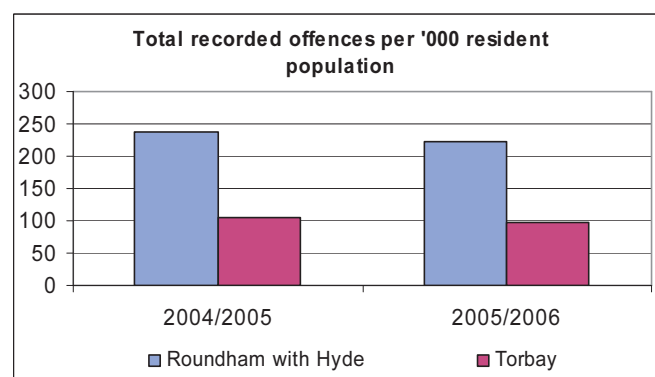
2006	Affordable decent housing (11.3%)
	Road and pavement repairs (8.2%)
	Job prospects (7.2%)
	Activities for teenagers (6.8%)
	Sports & leisure facilities (6.5%)
2003	Road and pavement repairs (11.8%)
	Low level of crime (10.9%)
	Wage levels & local cost of living (10%)
	Low level of traffic congestion (9.6%)
	Clean streets (9.2%)

- Affordable decent housing most needs improving for the residents of Roundham with Hyde.

Percentages are based on responses to a multiple choice question, and are unweighted.

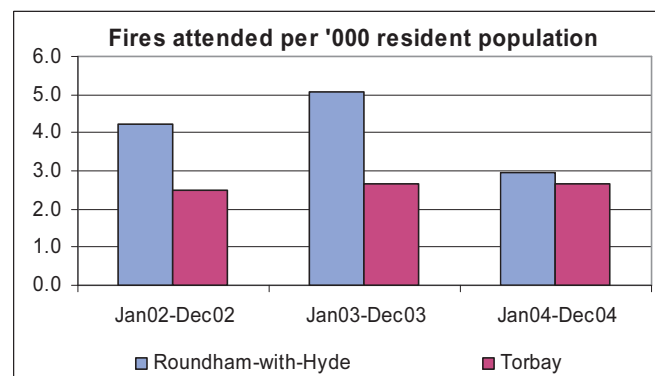
### Crime / Fire Rates

Torbay is a safe place to live, and the number of recorded offences per '000 resident population for Roundham with Hyde is well above that of the Torbay figure. The number of recorded offences over the period has dropped by 6.8% in Roundham with Hyde. The following graph illustrates the rate of recorded offences compared to Torbay.



Source: Amethyst

In 2004 there were 21 primary fires attended by the Devon Fire and Rescue service in Roundham with Hyde, or just under 3 fires attended per '000 resident population.



Source: ONS

## Limiting Long Term Illness (LLTI)

Limiting long-term illness covers any long-term illness; health problem or disability which limits daily activities or work.

LLTI	All people	People with LLTI	Proportion of population with LLTI
Roundham with Hyde	7,097	2,109	29.72%
Torbay	129,706	29,867	23.0%

Source: 2001 Census, ONS

## Life Expectancy

Life expectancy at birth for person in Roundham with Hyde ward is 75.7 years, compared to the Torbay average of 79.2 years (ward average).

Source: SWPHO

## Living Arrangements - Households

Half of households are occupied by married or cohabiting couples, there is a higher than bay wide proportion of divorced and widowed households.

Living arrangements	Roundham with Hyde	Torbay
Married or Cohabiting	50.4%	60.6%
Not living in a couple	22.6%	19.8%
Divorced / Separated	14.0%	9.9%
Widowed	13.0%	9.7%

Source: 2001 Census, ONS

## Housing Tenure

Over half of households are owner occupied – either outright, mortgaged or shared ownership. Almost a third of households being privately rented.

Tenure	Roundham with Hyde	Torbay
All Occupied households	3,444	57,420
Owner Occupied	58.4%	74.0%
Housing Association	7.8%	8.2%
Private Rent	29.7%	15.1%
Other	4.1%	2.7%

Source: 2001 Census, ONS

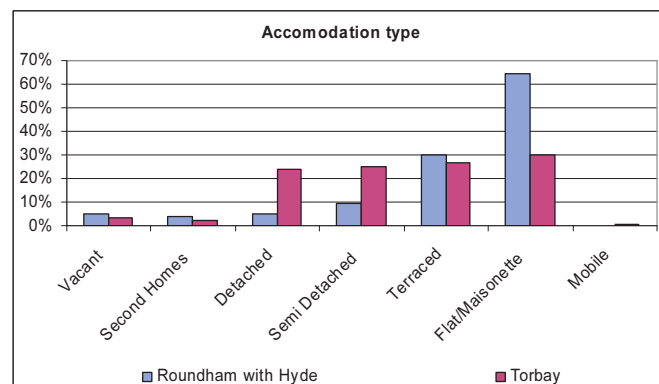
## Lone Parents

	Proportion of household spaces: lone parent with dependent children
Roundham with Hyde	6.4%
Torbay	6.6%

Source: 2001 Census, ONS

## Household Spaces

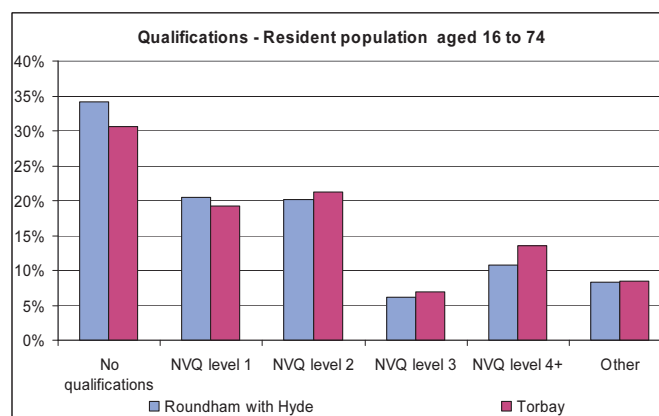
Almost two thirds of properties in the ward are Flat / Maisonette, noticeably higher than the bay proportion.



Source: 2001 Census, ONS

## Qualifications

Overall, residents in Roundham with Hyde have a lower level of qualification than the Torbay wide figure. 10.8% having NVQ level 4+ (HND, degree or higher).



Source: 2001 Census, ONS

## Economically Active

Economically Active	Roundham with Hyde	Torbay
All people aged 16 to 74	4,820	90,852
Economically active	2,964	63.3%
In employment	2,613	57.0%
Employees	1,965	46.3%
Self employed	648	10.8%
Unemployed	276	5.7%

Source: 2001 Census, ONS

Roundham with Hyde has a lower proportion of people aged 16 to 74 economically active, than compared to the bay.

### Occupation group

Occupation groups	Roundham with Hyde	Torbay
All people aged 16 - 74 in employment*	2,675	53,543
Managers and senior officials	19.9%	15.2%
Professional occupations	5.5%	7.3%
Associate professional and technical occupations	9.9%	12.5%
Administrative and secretarial occupations	7.8%	11.0%
Skilled trades occupations	13.0%	13.8%
Personal service occupations	8.7%	8.8%
Sales and customer service occupations	9.1%	9.0%
Process; plant and machine operatives	10.7%	9.4%
Elementary occupations	15.4%	13.0%

Source: 2001 Census, ONS

\*cells in original table have been randomly adjusted to avoid the release of confidential data.

### Industry of Employment

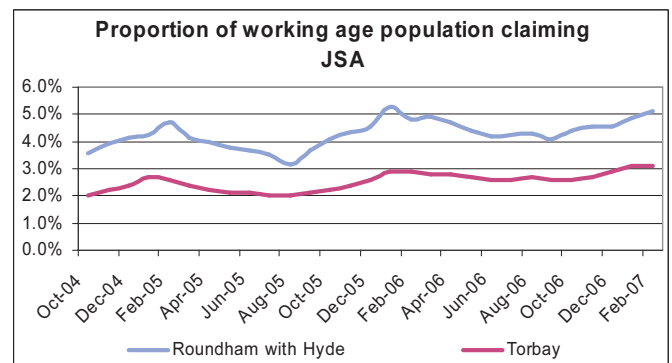
Industry of employment	Roundham with Hyde	Torbay
All people aged 16 - 74 in employment	2,675	53,542
Agriculture; hunting; forestry	1.0%	0.9%
Fishing	0.3%	0.3%
Mining & quarrying	0.1%	0.2%
Manufacturing	16.6%	14.7%
Electricity; gas and water supply	0.4%	0.6%
Construction	7.2%	7.9%
Wholesale & retail trade; repair of motor vehicles	16.7%	18.5%
Hotels and catering	17.8%	10.3%
Transport storage and communication	4.7%	5.6%
Financial intermediation	1.2%	2.1%
Real estate; renting and business activities	7.8%	8.6%
Public administration and defence	3.7%	4.5%
Education	5.0%	6.3%
Health and social work	11.1%	14.0%
Other	6.4%	5.6%

Source: 2001 Census, ONS

### Benefit Claimants

The rate of Job Seekers Allowance (JSA) claimants in Roundham with Hyde is noticeably

higher in comparison to the Torbay figure.



Source: NOMIS

Overall claimant levels in Roundham with Hyde are generally higher than the bay wide figure. Claimant levels as at August 2006.

Benefit Group	Roundham-with-Hyde	Torbay
Income Support Claimants	15.5%	8.3%
Incapacity Benefit / Severe Disablement Allowance	17.4%	10.1%
Disability Living Allowance	8.2%	6.2%

Source: DWP

### Income

Model-Based Estimates of Income for Wards, 2001/02	£
England & Wales (Ward Average)	550
South West (Ward Average)	500
Torbay (Ward Average)	410
Roundham with Hyde	320

Source: ONS

The model based income for Roundham with Hyde shows that the average total weekly household income in 2001/02 was lower than the Torbay average at £320 per week.

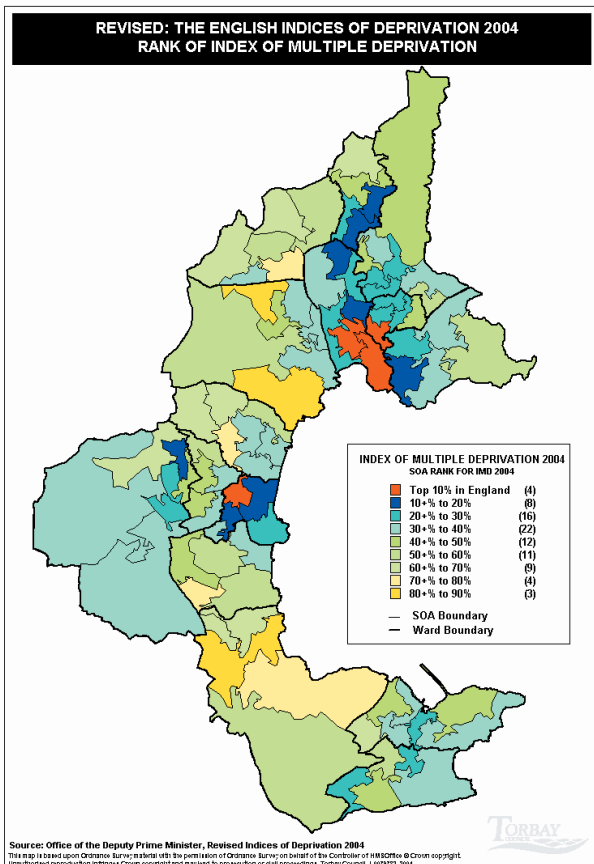
### Social Exclusion

Social exclusion happens when people or places suffer from a series of problems such as unemployment, discrimination, poor skills, low incomes, poor housing, high crime, ill health and family breakdown. When such problems combine they can create a vicious cycle. Social exclusion can happen as a result of problems that face one person in their life. But it can also start from birth, being born into poverty or to

parents with low skills still has a major influence on future life chances. The English Indices of Deprivation 2004 (revised) go some way to identifying hotspots of deprivation. The overall 'Index of Multiple Deprivation' is a model based on 7 domains covering the aforementioned social exclusion topics.

What was the Office of the Deputy Prime Minister, now the Department for Communities and Local Government published in 2004 a set of deprivation indices that were modelled on comparative social and economic datasets. The index of multiple deprivation is used widely to compare varying areas with associated levels of deprivation / social exclusion. Within the index, Torbay has areas of severe deprivation within the top 10% most deprived in England. The below map illustrates the areas (in red) in the top 10% most deprived in England.

### Index of Multiple Deprivation



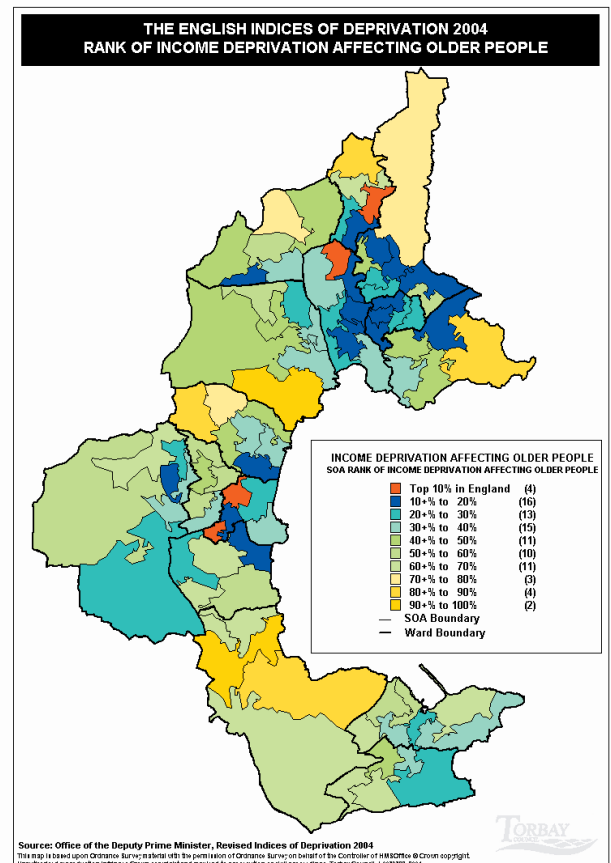
From the 2004 Indices of multiple deprivation there are a series of sub-domains that when aggregated together give the actual 7 domains that in turn lead to the Index of Multiple Deprivation.

The following maps illustrate the ranking within England for areas in Torbay for the following indicators:

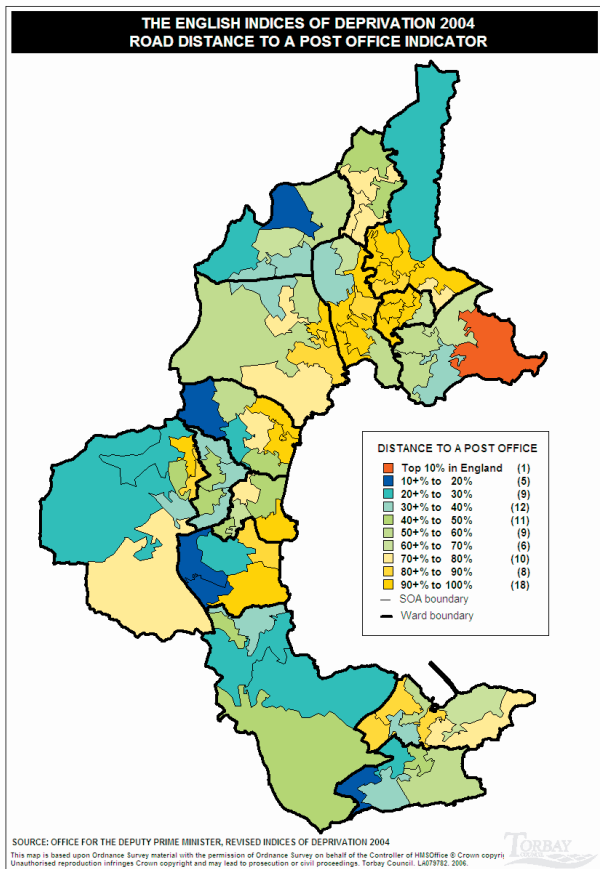
- Income deprivation affecting older people.
- Road distance to a Post Office.
- Road distance to a super market or convenience store.
- Road distance to a GP premises.
- Road distance to a primary school.

Further information of the English Indices of Deprivation 2004 can be obtained using the contact details at the end of this paper.

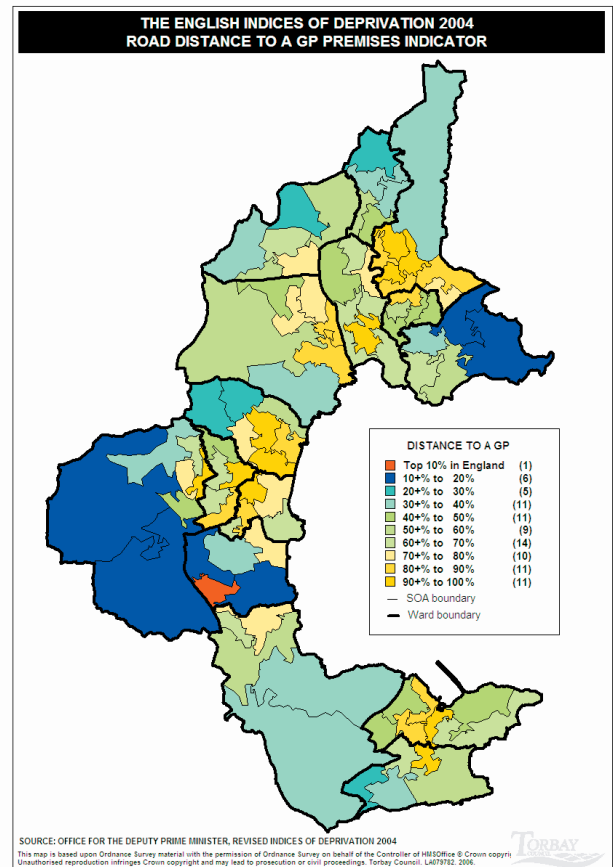
### Income deprivation affecting older people



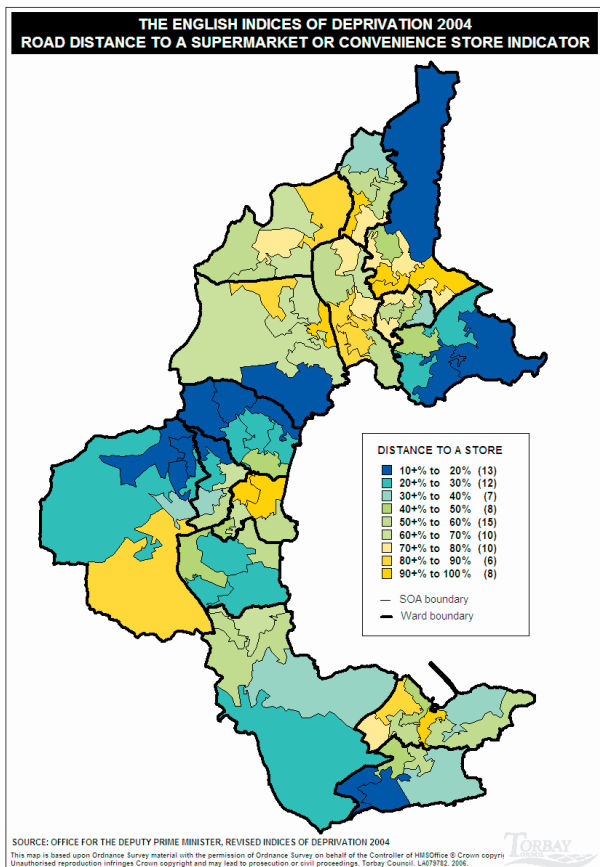
## Road distance to a Post Office



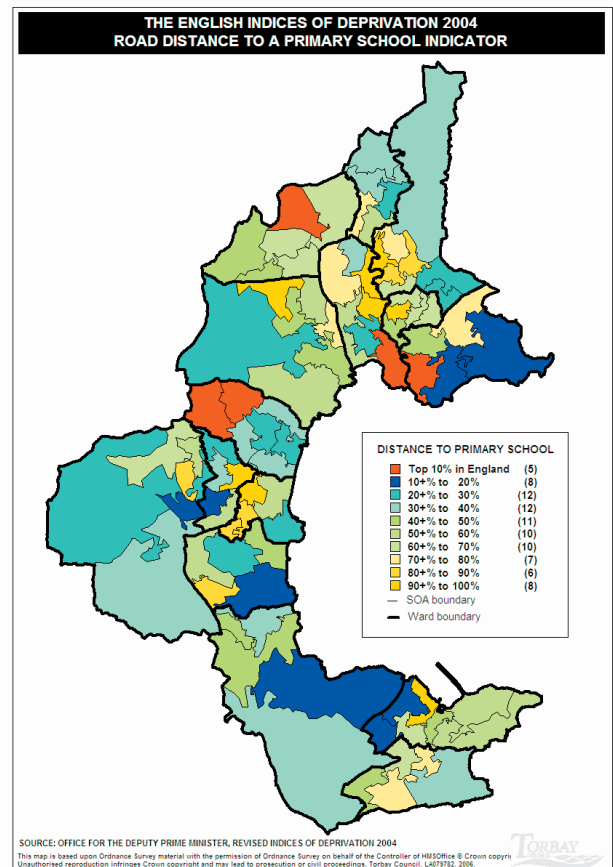
## Road distance to a GP premises



## Road distance to a super market or convenience store



## Road distance to a primary school



## ROUNDHAM WITH HYDE WARD

Below the electoral geography of a ward, there exists further statistical geography. The most recognised and well used geographies are Super Output Areas (SOAs). SOAs are based in data from the 2001 census and have, on average, 650 households within. The SOA boundaries do NOT reflect neighbourhoods, they are purely for statistical comparison, and are used as a mechanism for publishing data to a relatively small area.

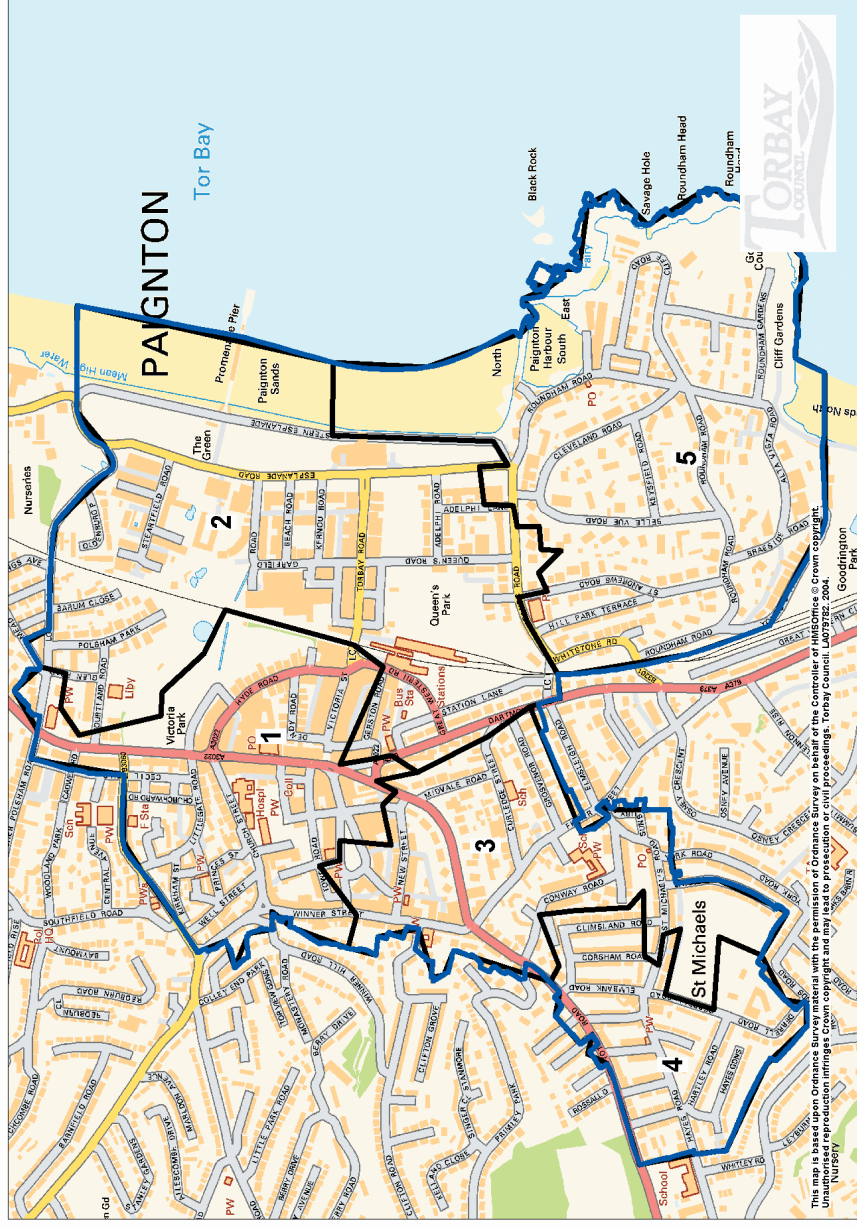
The map to the right shows the SOA structure for Roundham with Hyde, whilst the below table details the national ranking for the specific SOA in the Index of Multiple Deprivation and the 7 associated domains plus two further sub-domains.

The English Indices of Deprivation 2004 (revised)

Area number for ward map	Index of Multiple Deprivation	Income Domain	Employment Domain	Health and Disability domain	Education, Skills and Training Domain	Barriers to Housing Domain	Crime and Disorder Domain	Living Environment Domain	Income deprivation affecting children	Income deprivation affecting older people
	RANK	RANK	RANK	RANK	RANK	RANK	RANK	RANK	RANK	RANK
1	2,465	2,725	1,379	5,780	5,029	18,847	6,230	1,057	4,461	2,335
2	4,125	6,831	3,827	7,430	6,140	15,486	749	2,649	6,510	8,879
3	4,370	5,020	1,651	6,655	12,065	16,114	15,681	1,265	8,454	4,460
4	10,289	7,925	10,844	13,460	8,936	18,154	28,463	2,945	11,484	3,222
5	8,562	9,488	4,705	9,997	17,022	13,179	10,809	6,028	9,680	11,110

Source: Office of the Deputy Prime Minister, The English Indices of Deprivation 2004 (revised)

Areas shaded in grey are SOAs ranked within the top 10% most deprived in England



For further information please contact  
The Consultation and Research Team  
Torbay Council

Tel: (01803) 20 8829 / 8827

E-mail: [statistics@torbay.gov.uk](mailto:statistics@torbay.gov.uk)

DLH/03/07